

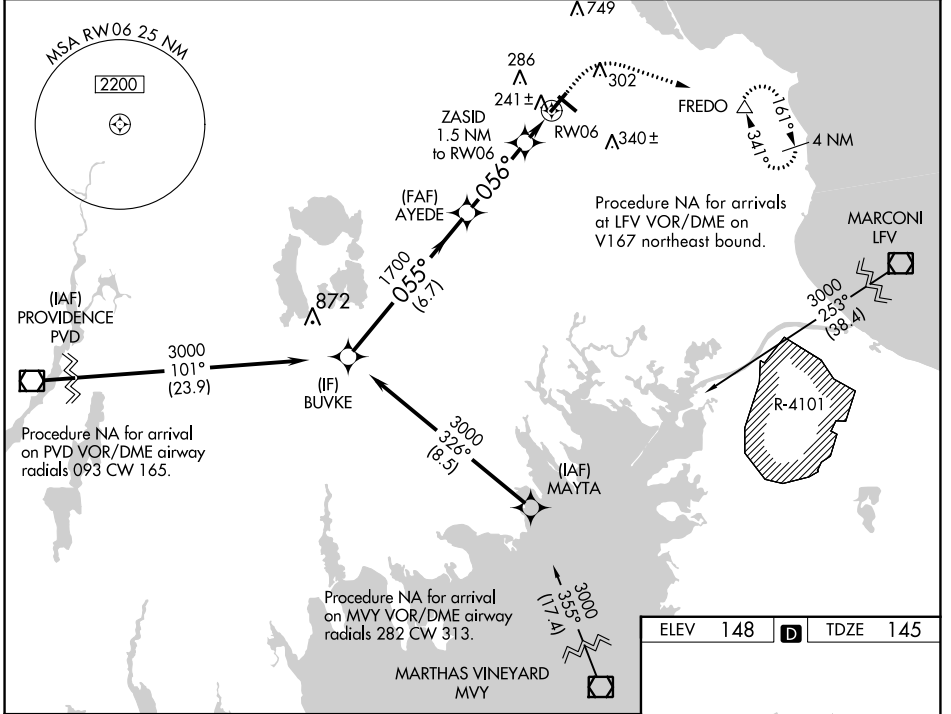
WAAS CH <b>40422</b> <b>W06A</b>	APP CRS <b>056°</b>	Rwy Idg <b>4650</b> TDZE <b>145</b> Apt Elev <b>148</b>
--	------------------------	---

# RNAV (GPS) RWY 6

PLYMOUTH MUNI (PYM)

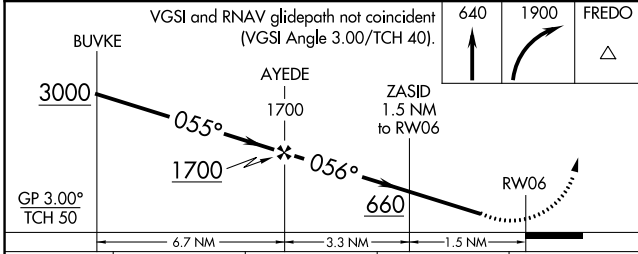
RNP APCH - GPS.	MALSF	MISSED APPROACH: Climb to 640 then climbing right turn to 1900 direct FREDO and hold.
<p><b>▼</b> Circling Rwy 15 NA at night. Rwy 6 helicopter visibility reduction below 3/4 SM NA.</p> <p><b>▲</b> For uncompensated Baro-VNAV systems, LNAV/VNAV NA below -17°C or above 54°C. For inop ALS, increase LPV all Cats visibility to 1/2 SM and LNAV/VNAV all Cats visibility to 1/2 SM.</p>		

ASOS <b>135.625</b>	BOSTON APP CON <b>118.2 284.6</b>	CLNC DEL <b>127.75</b>	UNICOM <b>122.725 (CTAF)</b>	<b>122.9</b>
------------------------	--------------------------------------	---------------------------	---------------------------------	--------------

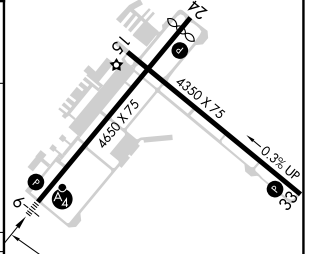


NE-1, 26 DEC 2024 to 23 JAN 2025

NE-1, 26 DEC 2024 to 23 JAN 2025



ELEV 148	<b>D</b>	TDZE 145
----------	----------	----------



	A	B	C	D
LPV DA	436-3/4	291 (300-3/4)		NA
LNAV/VNAV DA	426-3/4	281 (300-3/4)		NA
LNAV MDA	500-3/4	355 (400-3/4)		NA
<b>C</b> CIRCLING	620-1 472 (500-1)	640-1 492 (500-1)	760-1 3/4 612 (700-1 3/4)	NA

REIL Rwy 24

MIRL Rwy 6-24 and 15-33