

WAAS CH <b>62918</b> <b>W01A</b>	APP CRS <b>015°</b>	Rwy Idg TDZE Apt Elev	<b>5705</b> <b>1985</b> <b>1985</b>
--	------------------------	-----------------------------	---

# RNAV (GPS) RWY 1

SIDNEY-RICHLAND RGNL (SDY)

RNP APCH - GPS.

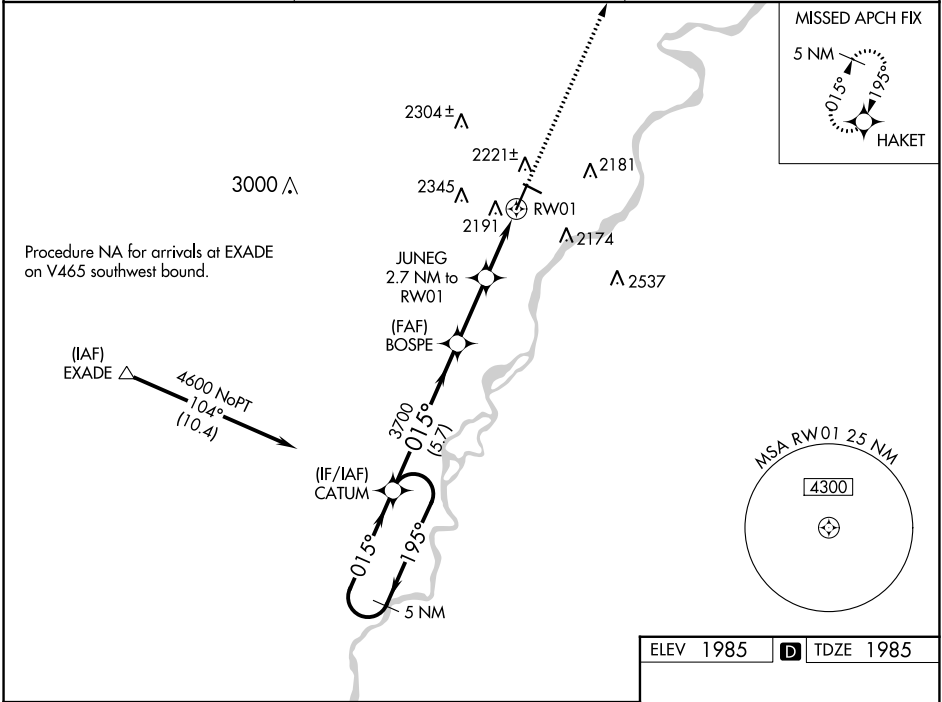
▼ For uncompensated Baro-VNAV systems, LNAV/VNAV NA below  
▲ -20°C or above 54°C. Circling Rwy 11, 29 NA at night.

MISSED APPROACH: Climb to  
4600 direct HAKET and hold.

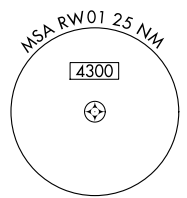
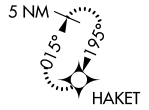
AWOS-3PT  
**119.275**

SALT LAKE CENTER  
**126.85 305.2**

UNICOM  
**122.8 (CTAF) 0**

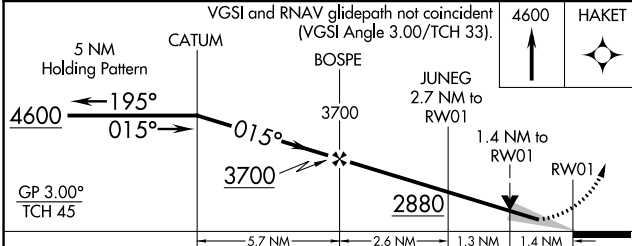


MISSED APCH FIX



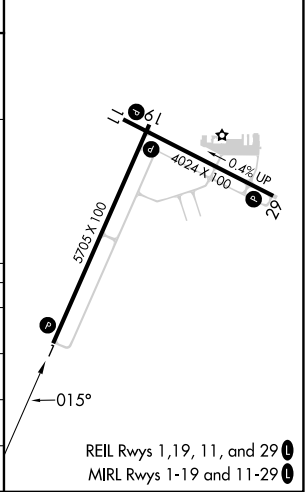
NW-1, 26 DEC 2024 to 23 JAN 2025

NW-1, 26 DEC 2024 to 23 JAN 2025



ELEV 1985 **D** TDZE 1985

CATEGORY	A	B	C	D
LPV DA		2238-7/8	253 (300-7/8)	
LNAV/VNAV DA		2419-11/2	434 (500-11/2)	
LNAV MDA	2460-1	475 (500-1)	2460-13/8	475 (500-13/8)
<b>C</b> CIRCLING	2580-1 595 (600-1)	2660-1 675 (700-1)	2700-2 715 (800-2)	2840-23/4 855 (900-23/4)



REIL Rws 1, 19, 11, and 29 **0**  
MIRL Rws 1-19 and 11-29 **0**