

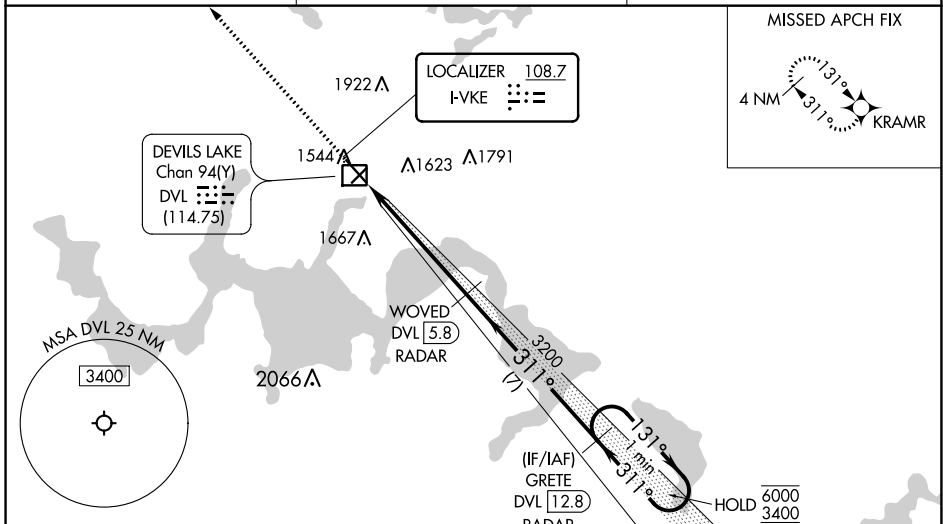
LOC I-VKE <b>108.7</b>	APP CRS <b>311°</b>	Rwy Idg TDZE Apt Elev	<b>6400</b> <b>1450</b> <b>1469</b>
---------------------------	------------------------	-----------------------------	---

# ILS or LOC RWY 31

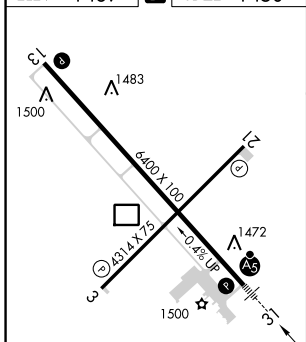
DEVILS LAKE RGNL (DVL)

RNP APCH - GPS.		MALSR 	MISSED APPROACH: Climb to 3400 direct KRAMR and hold.
DME or RADAR required.			
<p><b>NA</b> VDP NA when using Cando altimeter setting. When local altimeter setting not received, use Cando altimeter setting and increase S-ILS 31 DA to 1711 feet; increase all MDAs 80 feet and S-LOC 31 visibility Cat C/D 1/2 SM, and Circling visibility Cat C/D 1/4 SM. DME from DVL DME. DME use requires simultaneous reception of I-VKE and DVL DME. For inop ALS when using Cando altimeter setting, increase S-ILS 31 all Cats visibility to 3/4 SM. For inop ALS, increase S-LOC 31 Cat C/D visibility to 1 3/4 SM.</p>			

AWOS-3PT <b>125.875</b>	MINNEAPOLIS CENTER <b>124.2 270.3</b>	UNICOM <b>122.8 (CTAF)</b>
----------------------------	--	-------------------------------



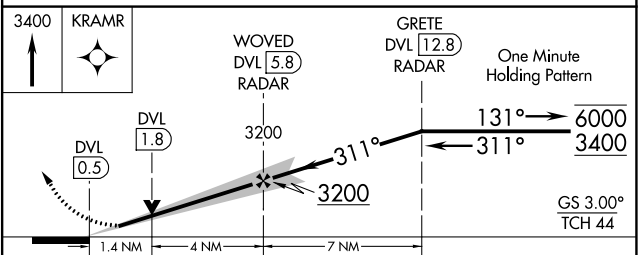
ELEV <b>1469</b>	<b>D</b>	TDZE <b>1450</b>
------------------	----------	------------------



HIRL Rwy 13-31  
REIL Rwys 3, 13 and 21  
MRL Rwy 3-21

FAF to MAP 5.4 NM

Knots	60	90	120	150	180
Min:Sec	5:24	3:36	2:42	2:10	1:48



CATEGORY	A	B	C	D
S-ILS 31	1650-1/2		200 (200-1/2)	
S-LOC 31	1920-1/2 470 (500-1/2)		1920-1 470 (500-1)	
<b>C</b> CIRCLING	2000-1 531 (600-1)		2240-2 1/4 771 (800-2 1/4)	2240-2 1/2 771 (800-2 1/2)

NC-1, 26 DEC 2024 to 23 JAN 2025

NC-1, 26 DEC 2024 to 23 JAN 2025