

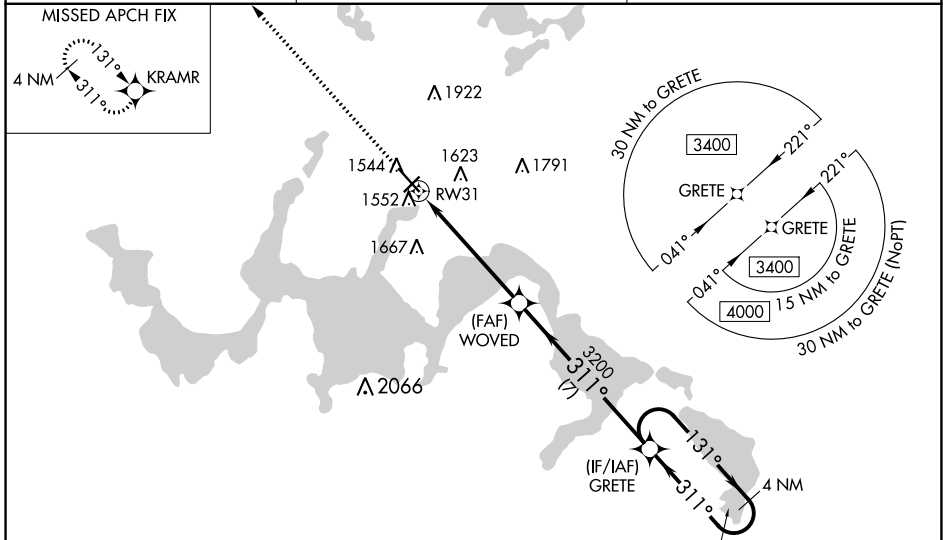
WAAS CH <b>58314</b> <b>W31A</b>	APP CRS <b>311°</b>	Rwy ldg <b>6400</b> TDZE <b>1450</b> Apt Elev <b>1469</b>
----------------------------------------	------------------------	-----------------------------------------------------------------

# RNAV (GPS) RWY 31

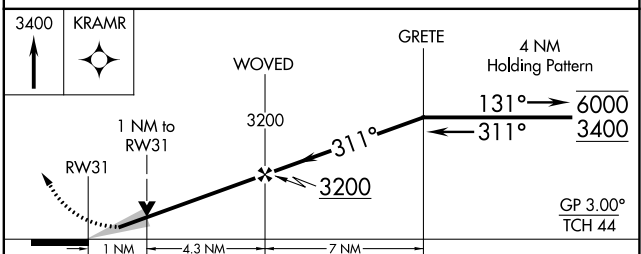
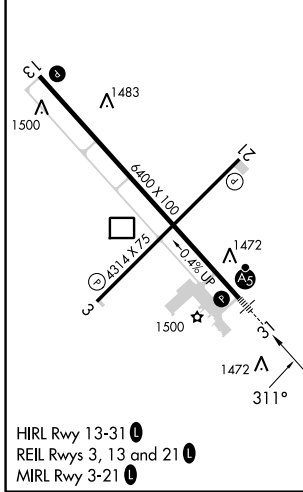
DEVILS LAKE RGNL (DVL)

RNP APCH - GPS.		MALSR 	MISSED APPROACH: Climb to 3400 direct KRAMR and hold.
<p><b>⚠</b> For uncompensated Baro-VNAV systems, LNAV/VNAV NA below -17°C or above 54°C. Baro-VNAV and VDP NA when using Cando altimeter setting. For inop ALS, increase LNAV/VNAV all Cats visibility to 7/8 SM, LNAV Cats C/D visibility to 1 SM. When local altimeter setting not received, use Cando altimeter setting and increase LPV DA 1711 feet, LNAV/VNAV DA to 1782 feet; increase all MDAs 80 feet and LNAV visibility Cat C/D 1/4 SM, and Circling visibility Cat C/D 1/4 SM. For inop ALS when using Cando altimeter setting, increase LPV all Cats visibility to 7/8 SM.</p>			

AWOS-3PT <b>125.875</b>	MINNEAPOLIS CENTER <b>124.2 270.3</b>	UNICOM <b>122.8 (CTAF) 0</b>
----------------------------	------------------------------------------	---------------------------------



ELEV <b>1469</b>	<b>D</b>	TDZE <b>1450</b>
------------------	----------	------------------



CATEGORY	A	B	C	D
LPV DA		1650-1/2	200 (200-1/2)	
LNAV/VNAV DA		1721-1/2	271 (300-1/2)	
LNAV MDA	1820-1/2	370 (400-1/2)	1820-5/8	370 (400-5/8)
<b>C</b> CIRCLING	2000-1	531 (600-1)	2240-2 1/4 771 (800-2 1/4)	2240-2 1/2 771 (800-2 1/2)

NC-1, 26 DEC 2024 to 23 JAN 2025

NC-1, 26 DEC 2024 to 23 JAN 2025