

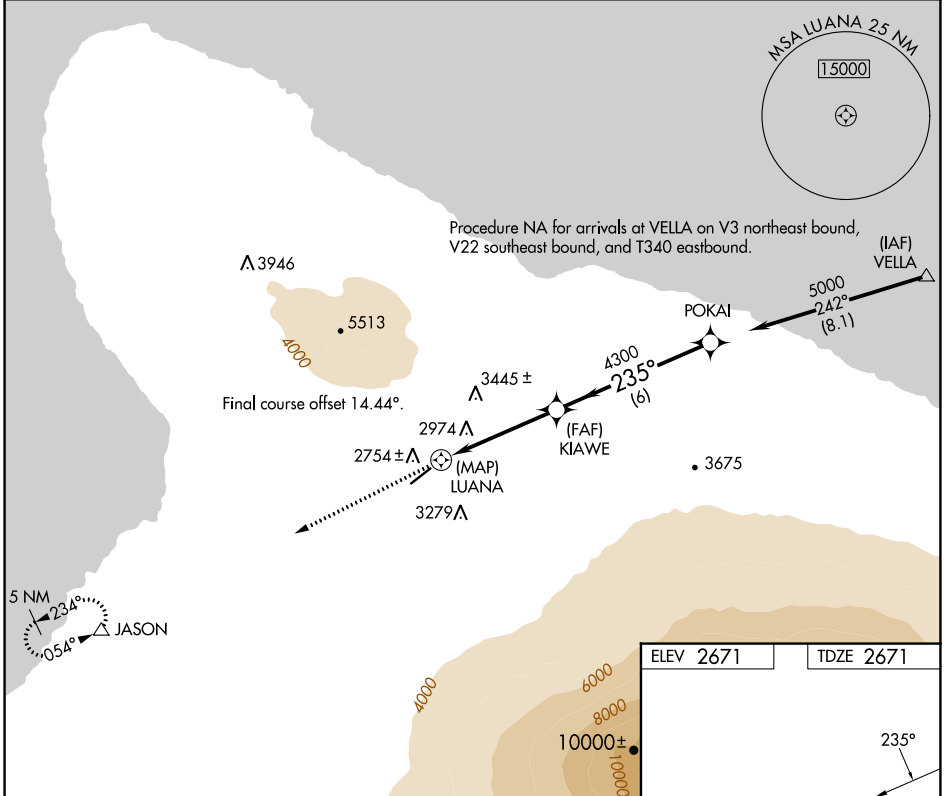
APP CRS	Rwy Idg	<b>5197</b>
<b>235°</b>	TDZE	<b>2671</b>
	Apt Elev	<b>2671</b>

# RNAV (GPS) RWY 22

WAIMEA-KOHALA (MUE)(PHMU)

RNP APCH - GPS.	MISSED APPROACH: Climb to 5000 direct JASON and hold.
<p>▼ Circling NA NW of Rwy 4-22. Rwy 22 helicopter visibility reduction below 1 SM NA. When local altimeter setting not received procedure NA.</p> <p>▲ NA</p>	

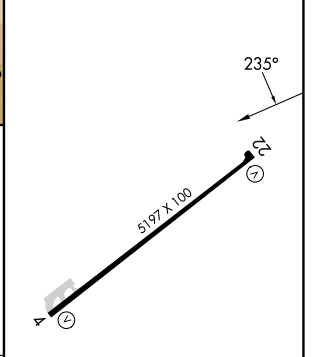
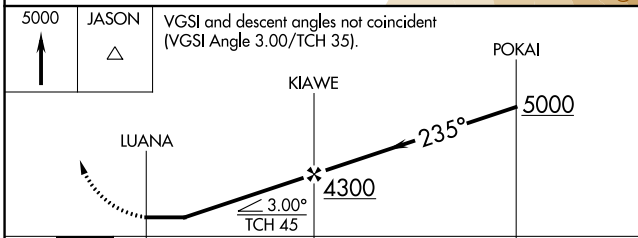
AWOS-3PT <b>120.0</b>	HCF CENTER <b>118.45 278.3</b>	CTAF <b>122.9 0</b>
--------------------------	-----------------------------------	------------------------



PAC, 26 DEC 2024 to 20 FEB 2025

PAC, 26 DEC 2024 to 20 FEB 2025

ELEV 2671	TDZE 2671
-----------	-----------



CATEGORY	A	B	C	D
LNVA MDA	3660-1¼ 989 (1000-1¼)	3660-1½ 989 (1000-1½)	3660-3	989 (1000-3)
CIRCLING	3660-1¼ 989 (1000-1¼)	3660-1½ 989 (1000-1½)	3660-3 989 (1000-3)	3980-3 1309 (1400-3)

MIRL Rwy 4-22 0  
REIL Rws 4 and 22