

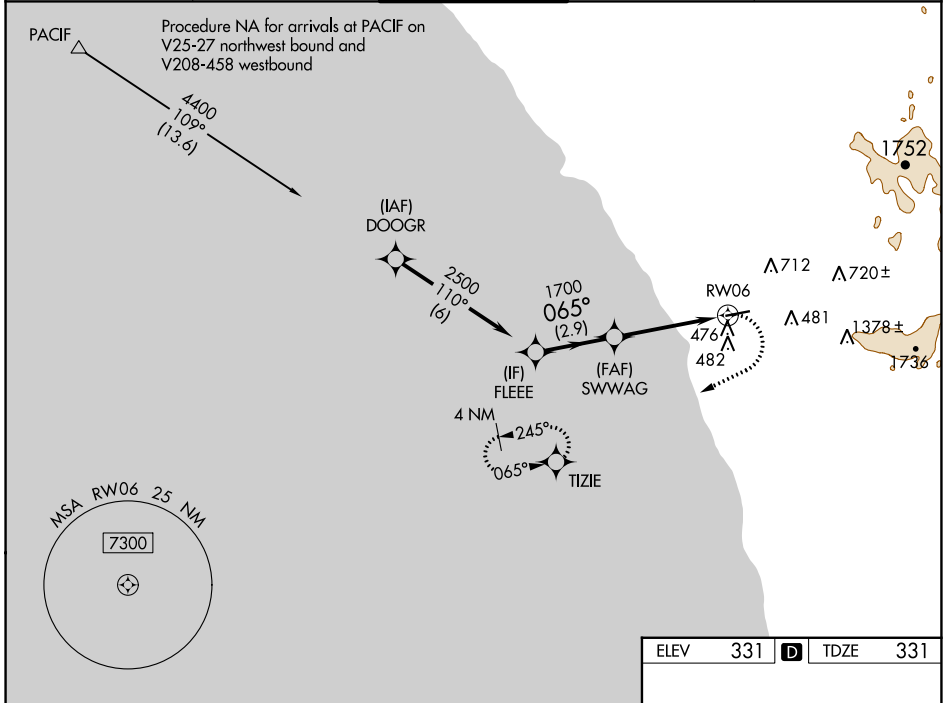
WAAS CH <b>40239</b> <b>W06A</b>	APP CRS <b>065°</b>	Rwy Idg TDZE Apt Elev	<b>4600</b> <b>331</b> <b>331</b>
--	------------------------	-----------------------------	---

# RNAV (GPS) Y RWY 6

MC CLELLAN-PALOMAR (CRQ)

RNP APCH-GPS.	MISSED APPROACH: Climbing right turn to 3000 direct TIZIE and hold, continue climb-in-hold to 3000.
<p><b>▼</b> For uncompensated Baro-VNAV systems, LNAV/VNAV NA below 4°C or above 54°C. When Carlsbad altimeter setting not received, procedure NA.</p>	

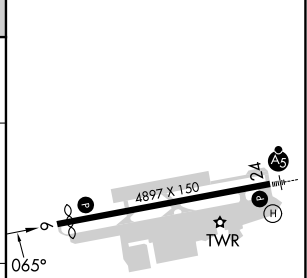
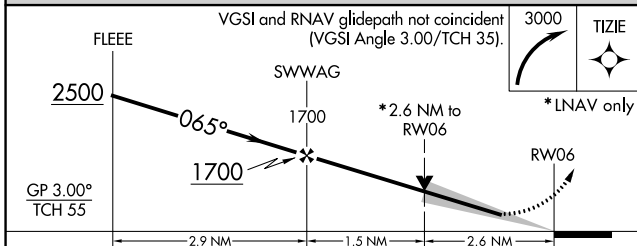
ATIS <b>120.15</b>	SOCAL APP CON <b>127.3 323.0</b>	<b>PALOMAR TOWER *</b> <b>118.6 (CTAF) 0 276.4</b>	GND CON <b>121.8</b>	CLNC DEL <b>134.85</b>
-----------------------	-------------------------------------	---	-------------------------	---------------------------



SW-3, 26 DEC 2024 to 23 JAN 2025

SW-3, 26 DEC 2024 to 23 JAN 2025

ELEV	331	<b>D</b>	TDZE	331
------	-----	----------	------	-----



CATEGORY	A	B	C	D
LPV DA	796-1½		465 (500-1½)	
LNAV/VNAV DA	837-1¾		506 (600-1¾)	
LNAV MDA	1200-1 869 (900-1)	1200-1¼ 869 (900-1¼)	1200-2½	869 (900-2½)
<b>C</b> CIRCLING	1200-1¼	869 (900-1¼)	1260-2¾ 929 (1000-2¾)	NA

HIRL Rwy 6-24	<b>0</b>
---------------	----------