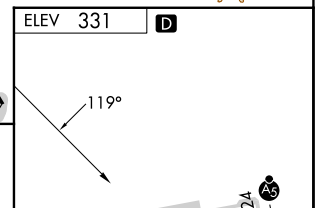
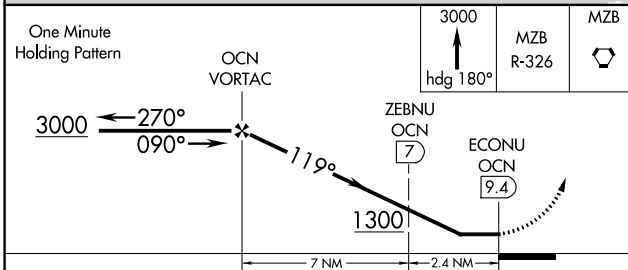
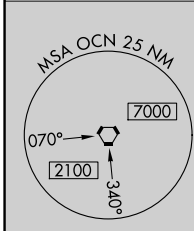
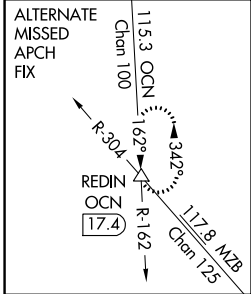
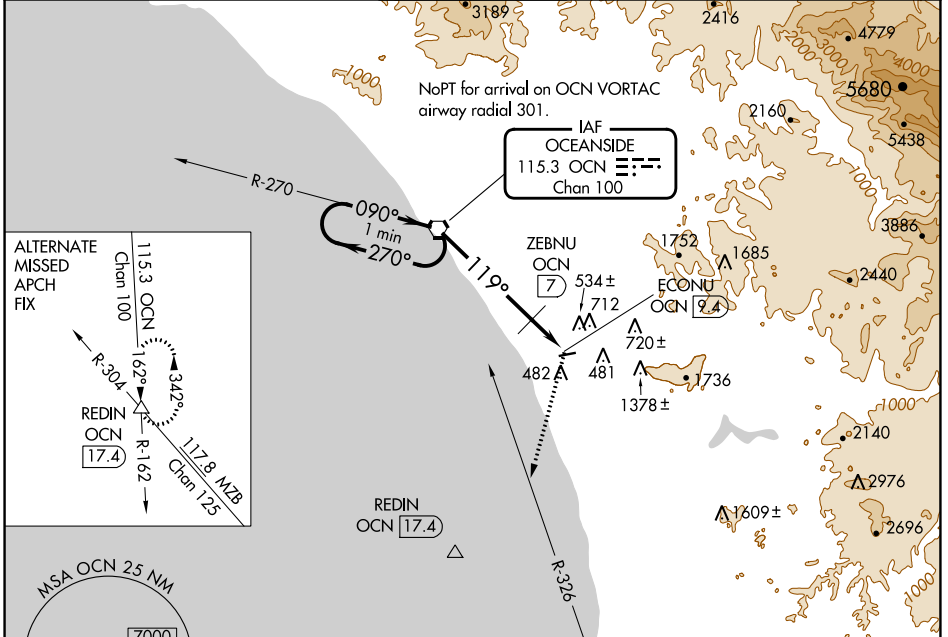


VORTAC OCN <b>115.3</b> Chan <b>100</b>	APP CRS <b>119°</b>	Rwy Idg TDZE Apt Elev	<b>N/A</b> <b>N/A</b> <b>331</b>
---	------------------------	-----------------------------	--

**VOR-A**  
MC CLELLAN-PALOMAR (CRQ)

**MISSED APPROACH:** Climb to 3000 on heading 180° and on MZB R-326 to MZB VORTAC.

ATIS <b>120.15</b>	SOCAL APP CON <b>127.3 323.0</b>	<b>PALOMAR TOWER*</b> <b>118.6 (CTAF) 0 276.4</b>	GND CON <b>121.8</b>	CLNC DEL <b>134.85</b>
-----------------------	-------------------------------------	--	-------------------------	---------------------------



CATEGORY	A	B	C	D
<b>CIRCLING</b>	1300-1¼ 969 (1000-1¼)	1300-1½ 969 (1000-1½)	1300-3 969 (1000-3)	NA
<b>ZEBNU FIX MINIMUMS</b>				
<b>CIRCLING</b>	920-1 589 (600-1)	1020-1 689 (700-1)	1260-2¾ 929 (1000-2¾)	NA

ELEV 331	<b>D</b>				
<b>HIRL Rwy 6-24</b>					
<b>FAF to MAP 9.4 NM</b>					
Knots	60	90	120	150	180
Min:Sec	9:24	6:16	4:42	3:46	3:08

SW-3, 26 DEC 2024 to 23 JAN 2025

SW-3, 26 DEC 2024 to 23 JAN 2025