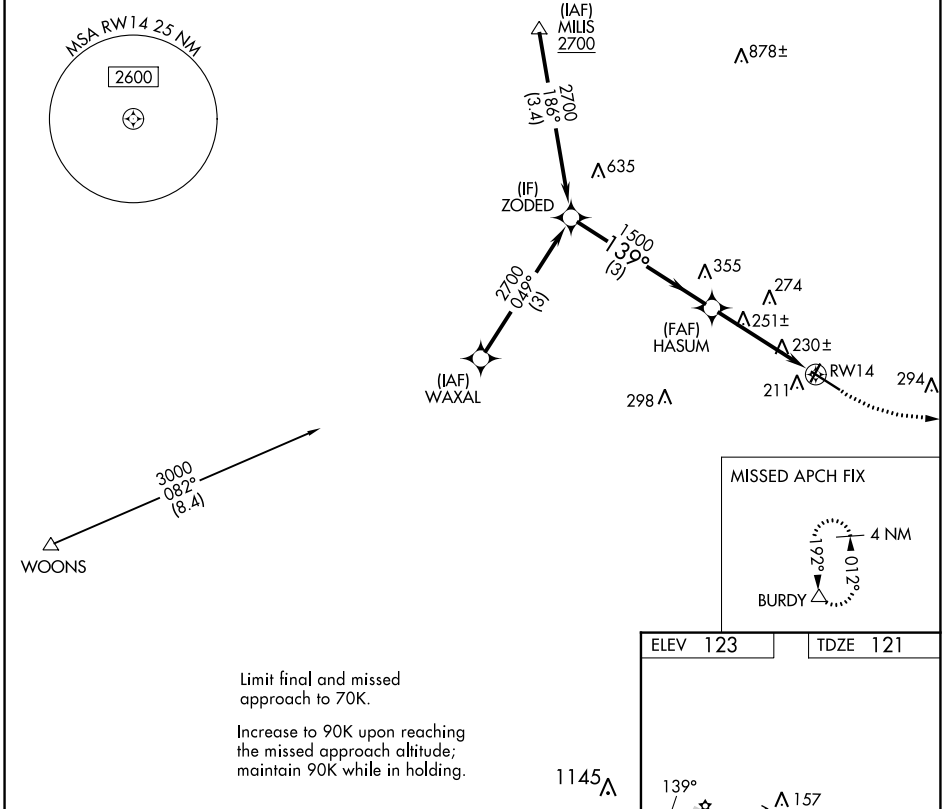


WAAS CH 50444 W14B	APP CRS 139°	Rwy ldg 2991 TDZE 121 Apt Elev 123
--	------------------------	---

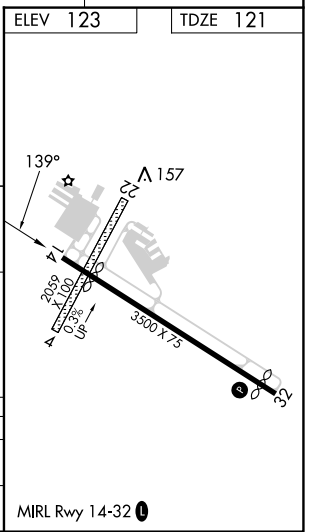
COPTER RNAV (GPS) Y RWY 14

MANSFIELD MUNI (1B9)

RNP APCH - GPS.		MISSED APPROACH: Climbing left turn to 2000 direct BURDY and hold.	
Procedure NA at night. Use Taunton altimeter setting.			
AWOS-3PT 118.675	TAN ASOS 132.675	BOSTON APP CON 124.1	UNICOM 123.0 (CTAF) 0



ZODED		2000	BURDY
2700	139°	HASUM	1500
3 NM		5.70°	TCH 40
		2.2 NM	
2700	RW14		
CATEGORY	COPTER		
LP MDA	520-1	399 (400-1)	
LNAV MDA	580-1	459 (500-1)	



NE-1, 26 DEC 2024 to 23 JAN 2025

NE-1, 26 DEC 2024 to 23 JAN 2025

COPTER RNAV (GPS) Y RWY 14