

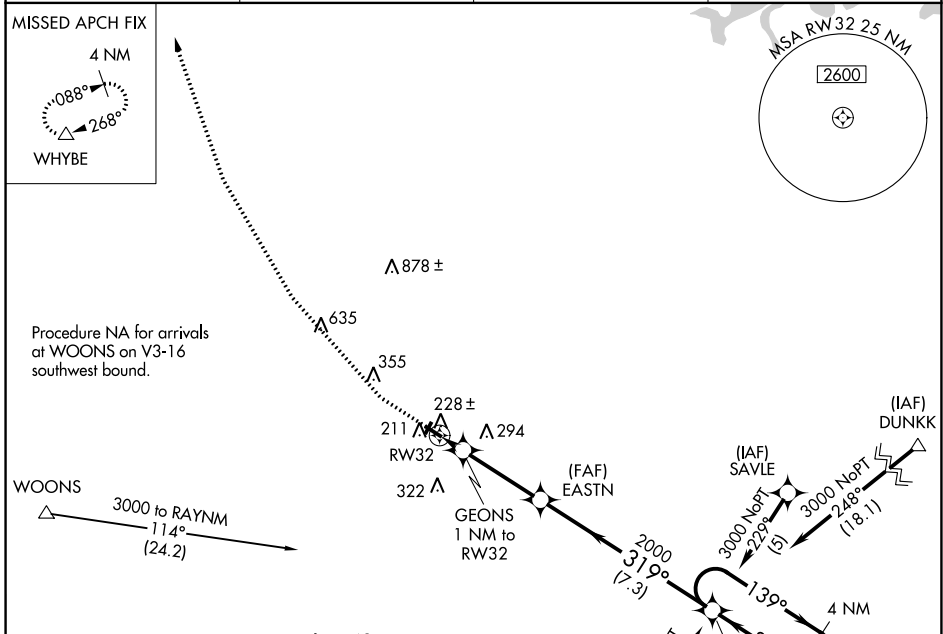
WAAS CH 97644 W32A	APP CRS 319°	Rwy Idg TDZE Apt Elev	3263 121 123
----------------------------------------	------------------------	-----------------------------	-----------------------------------------

RNAV (GPS) RWY 32

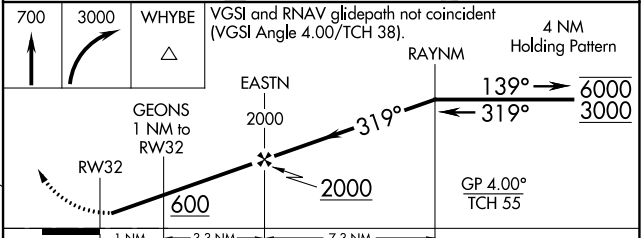
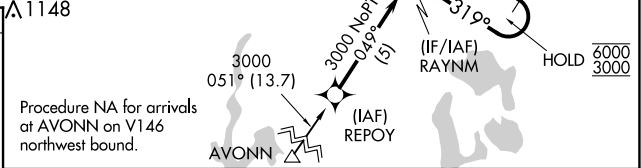
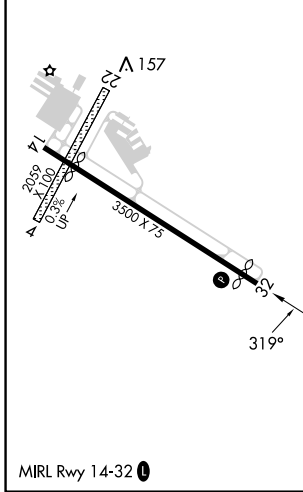
MANSFIELD MUNI (1B9)

RNP APCH - GPS.	MISSED APPROACH: Climb to 700 then climbing right turn to 3000 direct WHYBE and hold.
<p>NA Circling NA to Rwys 4 and 22. Procedure NA at night. Rwy 32 helicopter visibility reduction below 1 SM NA. Use Taunton altimeter setting.</p>	

AWOS-3PT 118.675	TAN ASOS 132.675	BOSTON APP CON 124.1	UNICOM 123.0 (CTAF)
----------------------------	----------------------------	--------------------------------	-------------------------------



ELEV 123	TDZE 121
----------	----------



CATEGORY	A	B	C	D
LPV DA	452-1	331 (400-1)		NA
LNAV MDA	520-1	399 (400-1)		NA
C CIRCLING	600-1 477 (500-1)	640-1 517 (600-1)		NA

NE-1, 26 DEC 2024 to 23 JAN 2025

NE-1, 26 DEC 2024 to 23 JAN 2025