

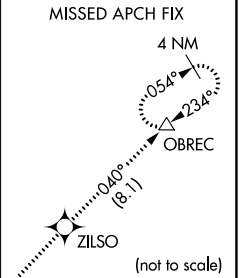
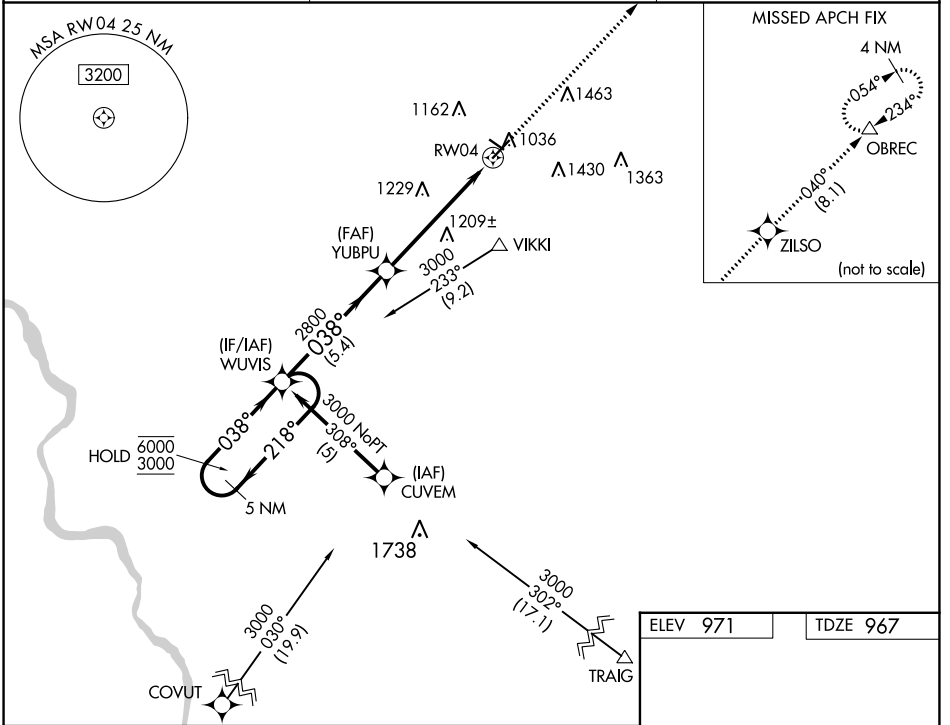
WAAS CH 63101 W04A	APP CRS 038°	Rwy Idg TDZE Apt Elev	5000 967 971
--	------------------------	-----------------------------	---

RNAV (GPS) RWY 4

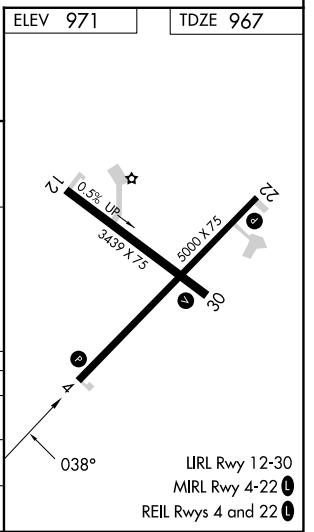
SHENANDOAH MUNI (SDA)

RNP APCH.	MISSED APPROACH: Climb to 3000 direct ZILSO and on track 040° to OBREC and hold.
<p>⚠ Circling Rwy 30 NA at night. VDP NA when using Clarinda altimeter setting. Rwy 4 helicopter visibility reduction below 3/4 SM NA. When local altimeter setting not received, use Clarinda altimeter setting: increase DA to 1275 feet; increase all MDAs 60 feet.</p>	

AWOS-3 125.525	OMAHA APP CON 124.5 263.0	UNICOM 122.8 (CTAF)
--------------------------	-------------------------------------	-------------------------------



5 NM Holding Pattern		VGSIs and RNAV glidepath not coincident (VGSi Angle 3.00/TCH 35).		3000	ZILSO	tr 040°	OBREC
6000 ← 218°		→ 038°		*RNAV only			
3000		038°		*1.4 NM to RWY 4			
GP 3.00°		2800		RWY 4			
TCH 40		5.4 NM		4.2 NM		1.4 NM	
CATEGORY	A	B	C	D			
LPV DA	1230-1	263 (300-1)	NA				
LNNAV MDA	1460-1	493 (500-1)	NA				
CIRCLING	1520-1 549 (600-1)	1540-1 569 (600-1)	NA				



NC-3, 26 DEC 2024 to 23 JAN 2025

NC-3, 26 DEC 2024 to 23 JAN 2025