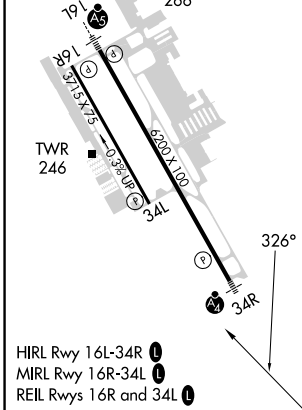
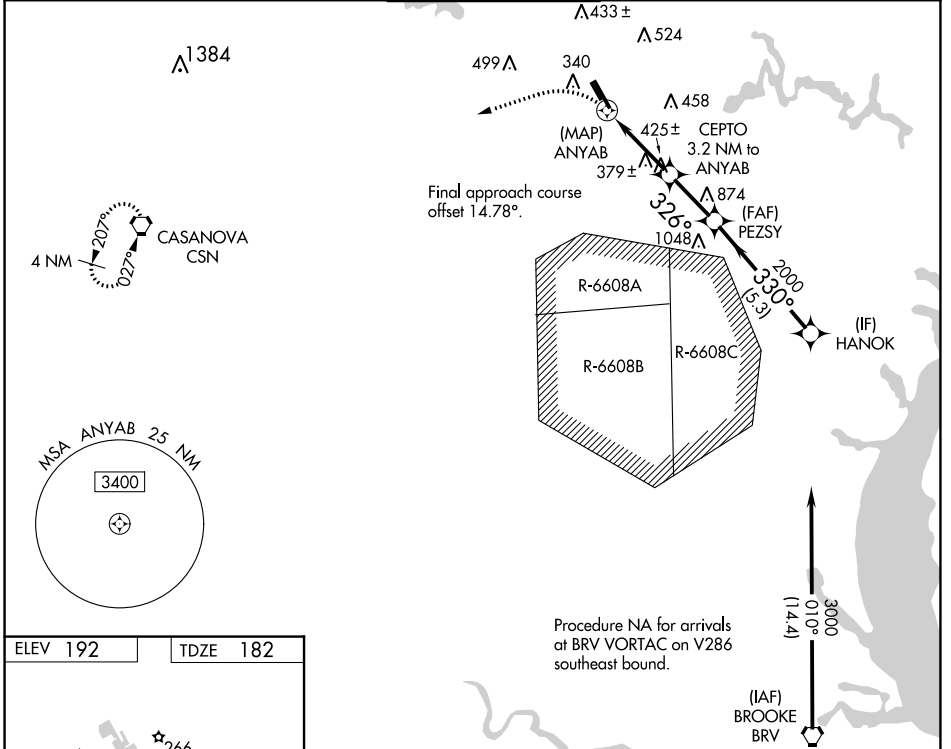


WAAS CH <b>56239</b> <b>W34B</b>	APP CRS <b>326°</b>	Rwy Idg <b>3715</b> TDZE <b>182</b> Apt Elev <b>192</b>
--	------------------------	---

# RNAV (GPS) RWY 34L

MANASSAS RGNL/HARRY P DAVIS FLD (HEF)

<p><b>▼</b> DME/DME RNP-0.3 NA. When local altimeter setting not received, use Washington Dulles Intl altimeter setting and increase all MDA 60 feet; increase LNAV Cat C/D and Circling Cat C and D visibility ¼ mile. Helicopter visibility reduction below ¾ SM NA.</p>		<p><b>MISSED APPROACH:</b> Climbing left turn to 3000 direct CSN VORTAC and hold.</p>		
ATIS <b>125.175</b>	POTOMAC APP CON <b>128.525 306.925</b>	<b>MANASSAS TOWER *</b> <b>133.1 (CTAF) 0 360.75</b>	GND CON <b>121.8</b>	CLNC DEL <b>120.2</b>



3000	CSN	VGSIs and descent angles not coincident (VGSi Angle 3.00/TCH 43).			
		CEPTO 3.2 NM to ANYAB		HANOK 3000	
0.9 NM to ANYAB		PEZSY 2000		330°	
1260		2.79°		TCH 40	
0.4		0.9		2.4 NM	
CATEGORY		A	B	C	D
LP	MDA	640-1	458 (500-1)	640-1 3/8	458 (500-1 3/8)
LNAV	MDA	680-1	498 (500-1)	680-1 3/8	498 (500-1 3/8)
CIRCLING		720-1	740-1	840-1 3/4	880-2 1/4
		528 (600-1)	548 (600-1)	648 (700-1 3/4)	688 (700-2 1/4)

NE-3, 26 DEC 2024 to 23 JAN 2025

NE-3, 26 DEC 2024 to 23 JAN 2025