

APP CRS 023°	Rwy Idg N/A
	TDZE N/A
	Apt Elev 1040

RNAV (GPS)-B

JAFFREY AIRFIELD SILVER RANCH (A/FN)

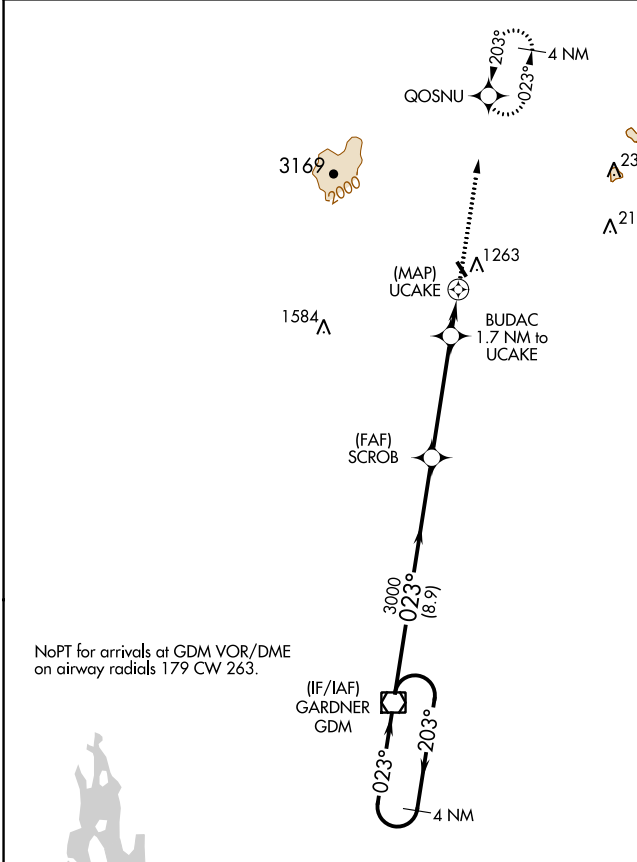
RNP APCH-GPS.

▼ When local altimeter setting not received, use Keene altimeter setting and increase all MDA 120 feet and all Cats visibility 1/4 mile. Procedure NA at night.

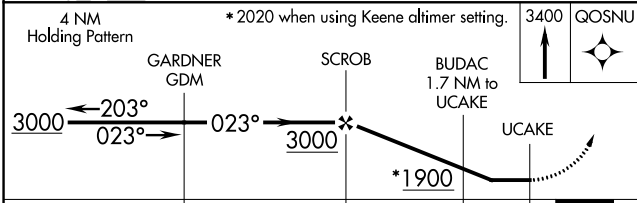
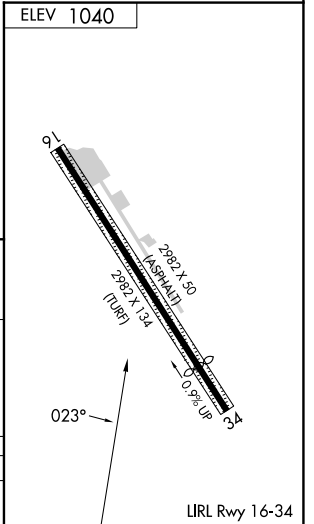
▲ Rwy 16 and 34 helicopter visibility reduction below 1 SM NA.

MISSED APPROACH: Climb to 3400 direct QOSNU and hold.

ASOS 135.875	BOSTON CENTER 123.75 338.2	UNICOM 122.8 (CTAF)
------------------------	--------------------------------------	-------------------------------



NoPT for arrivals at GDM VOR/DME on airway radials 179 CW 263.



CATEGORY	A	B	C	D
CIRCLING	1760-1 720 (800-1)	1820-1 780 (800-1)	NA	

NE-1, 26 DEC 2024 to 23 JAN 2025

NE-1, 26 DEC 2024 to 23 JAN 2025