

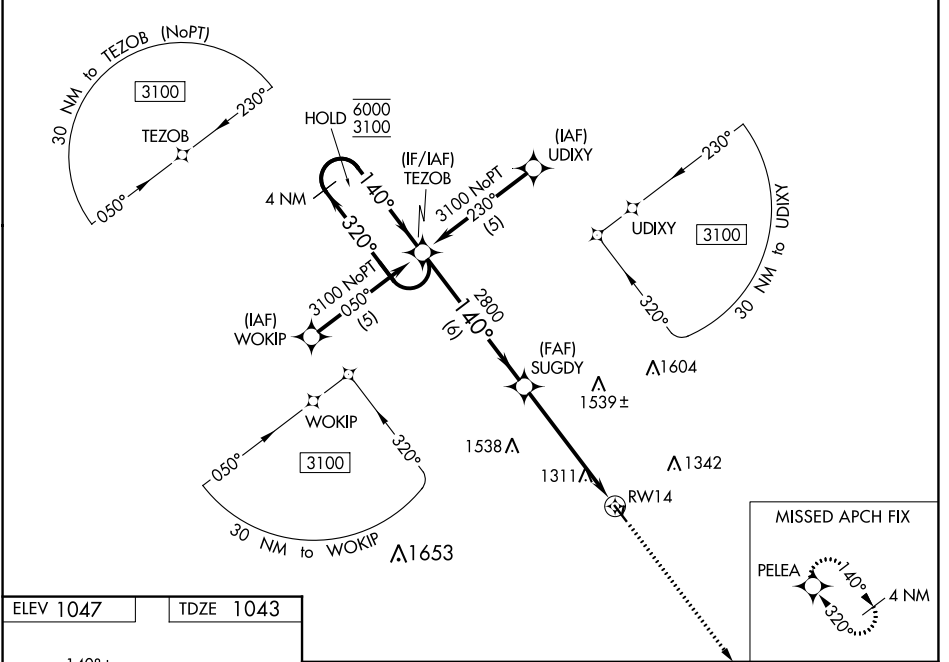
WAAS CH <b>40219</b> <b>W14A</b>	APP CRS <b>140°</b>	Rwy Idg TDZE Apt Elev	<b>4000</b> <b>1043</b> <b>1047</b>
--	------------------------	-----------------------------	---

# RNAV (GPS) RWY 14

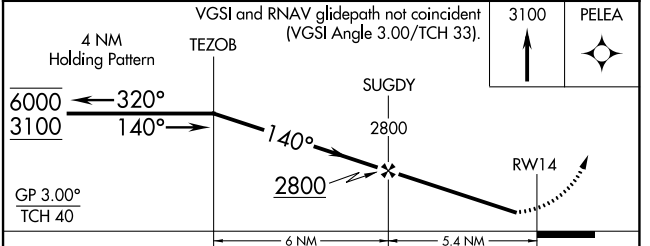
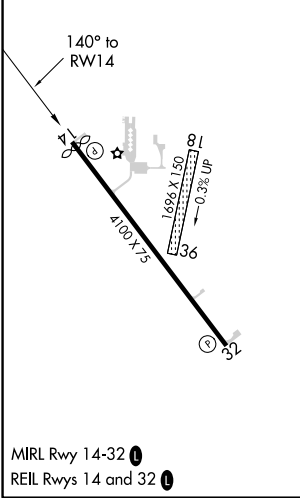
JEFFERSON MUNI (E F W)

RNP APCH-GPS.	<p><b>⚠</b> Circling NA to Rwy 18 and 36. Rwy 14 helicopter visibility reduction below <math>\frac{3}{4}</math> SM NA. Baro-VNAV NA. Use Perry altimeter setting, when not received, use Carrol altimeter setting and increase LPV DA to 1362 feet, increase LNAV/VNAV DA to 1691 feet and visibility <math>\frac{1}{8}</math> SM. Increase all MDA 40 feet.</p>	MISSED APPROACH: Climb to 3100 direct PELEA and hold.
---------------	--	---

PRO AWOS-3 <b>118.0</b>	MINNEAPOLIS CENTER <b>134.0 288.3</b>	UNICOM <b>122.8 (CTAF) 0</b>
----------------------------	--	---------------------------------



ELEV 1047	TDZE 1043
-----------	-----------



CATEGORY	A	B	C	D
LPV DA	1330-1	287 (300-1)		NA
LNAV/VNAV DA	1659-1 $\frac{3}{4}$	616 (700-1 $\frac{3}{4}$ )		NA
LNAV MDA	1600-1	557 (600-1)		NA
CIRCLING	1600-1 553 (600-1)	1660-1 613 (700-1)		NA

NC-3, 26 DEC 2024 to 23 JAN 2025

NC-3, 26 DEC 2024 to 23 JAN 2025