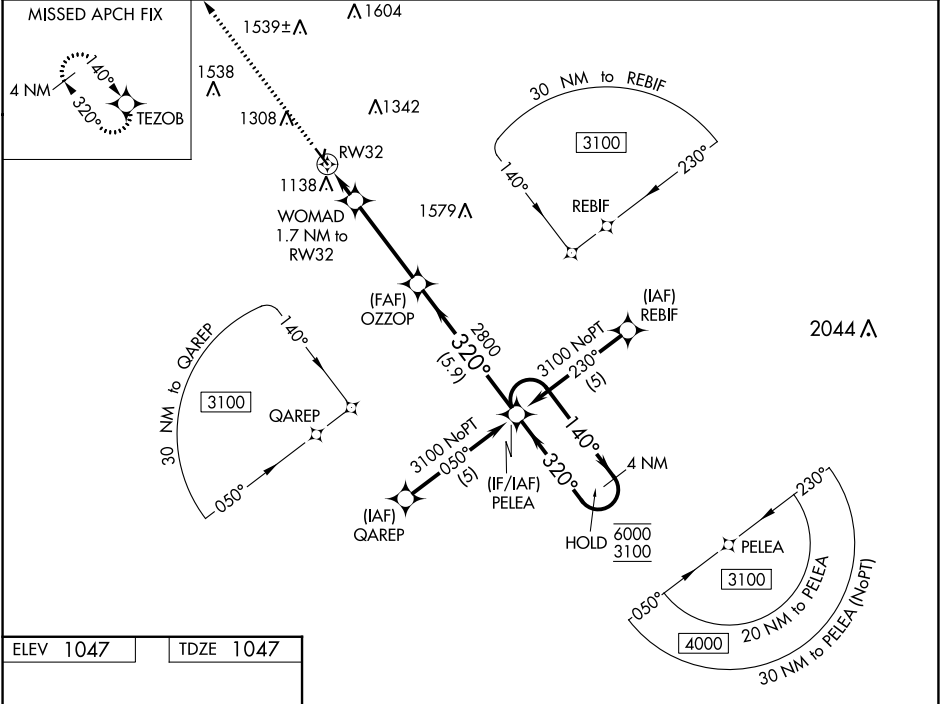


WAAS CH <b>40045</b> <b>W32A</b>	APP CRS <b>320°</b>	Rwy ldg <b>4100</b> TDZE <b>1047</b> Apt Elev <b>1047</b>
--	------------------------	---

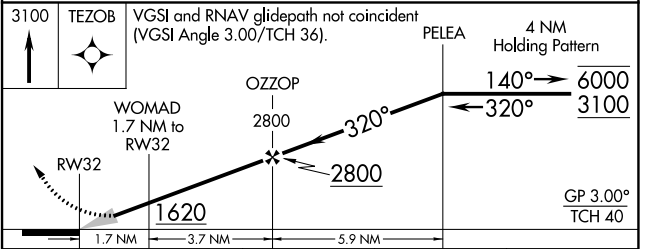
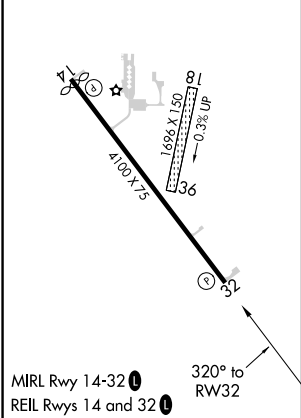
# RNAV (GPS) RWY 32

JEFFERSON MUNI (E F W)

RNP APCH-GPS.		MISSED APPROACH: Climb to 3100 direct TEZOB and hold.
<p>⚠ Circling NA to Rwy 18 and 36. Baro-VNAV NA. Use Perry altimeter setting, when not received use Carrol altimeter setting and increase LPV DA to 1367. Increase LNAV/VNAV DA to 1367 and increase all MDA 40 feet.</p>		
PRO AWOS-3 <b>118.0</b>	MINNEAPOLIS CENTER <b>134.0 288.3</b>	UNICOM <b>122.8 (CTAF) 0</b>



ELEV 1047	TDZE 1047
-----------	-----------



CATEGORY	A	B	C	D
LPV DA	1334-1	287 (300-1)		NA
LNAV/VNAV DA	1334-1	287 (300-1)		NA
LNAV MDA	1440-1	393 (400-1)		NA
CIRCLING	1600-1 553 (600-1)	1660-1 613 (700-1)		NA

NC-3, 26 DEC 2024 to 23 JAN 2025

NC-3, 26 DEC 2024 to 23 JAN 2025