

WAAS CH 99724 W06A	APP CRS 059°	Rwy Idg TDZE Apt Elev	2598 670 670
--	------------------------	-----------------------------	---

RNAV (GPS) RWY 6

BUFFALO AIRFIELD (9G~~0~~)

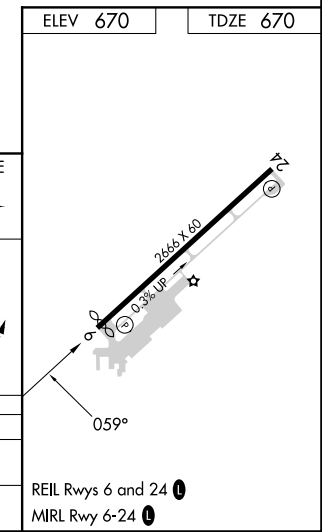
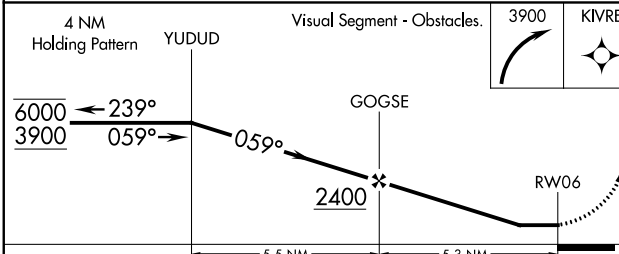
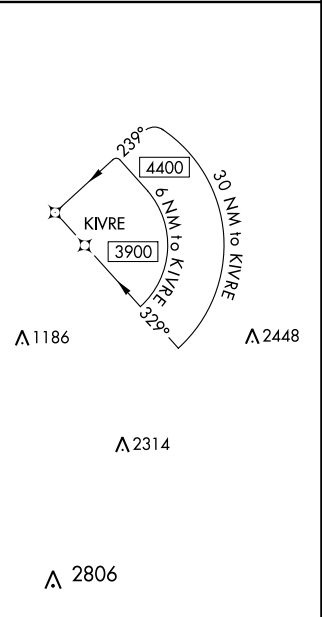
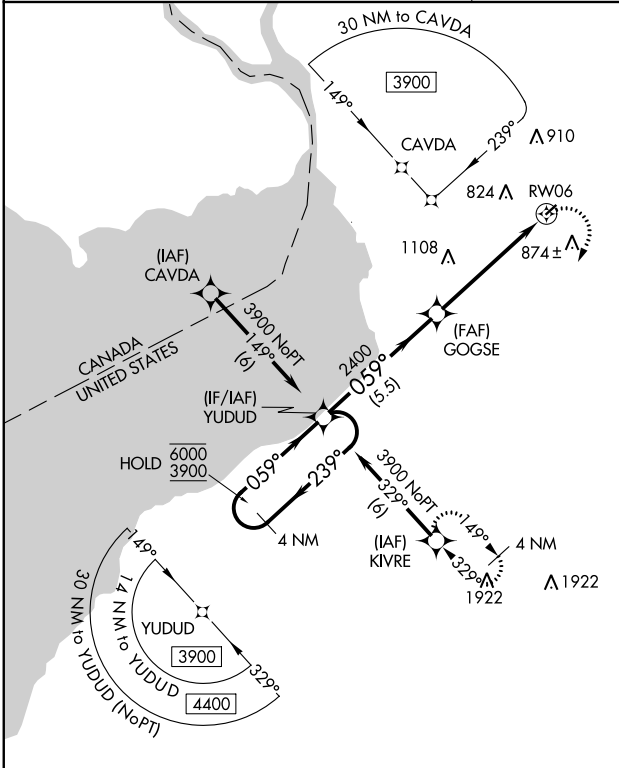
RNP APCH.

Procedure NA at night. Rwy 6 helicopter visibility reduction below 1 SM NA.
Use Buffalo Niagara Intl altimeter setting.

MISSED APPROACH: Climbing right turn to 3900 direct KIVRE and hold, continue climb in hold to 3900.

BUFFALO APP CON
126.15 263.125

UNICOM
122.975 (CTAF) 0



CATEGORY	A	B	C	D
LP MDA	1180-1	510 (600-1)		NA
LNAV MDA	1180-1	510 (600-1)		NA

NE-2, 26 DEC 2024 to 23 JAN 2025

NE-2, 26 DEC 2024 to 23 JAN 2025