

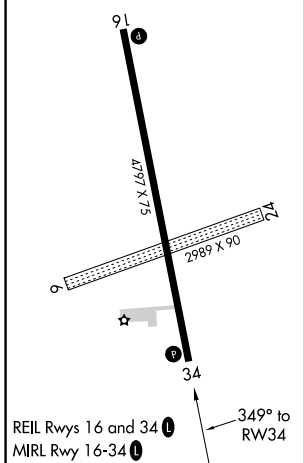
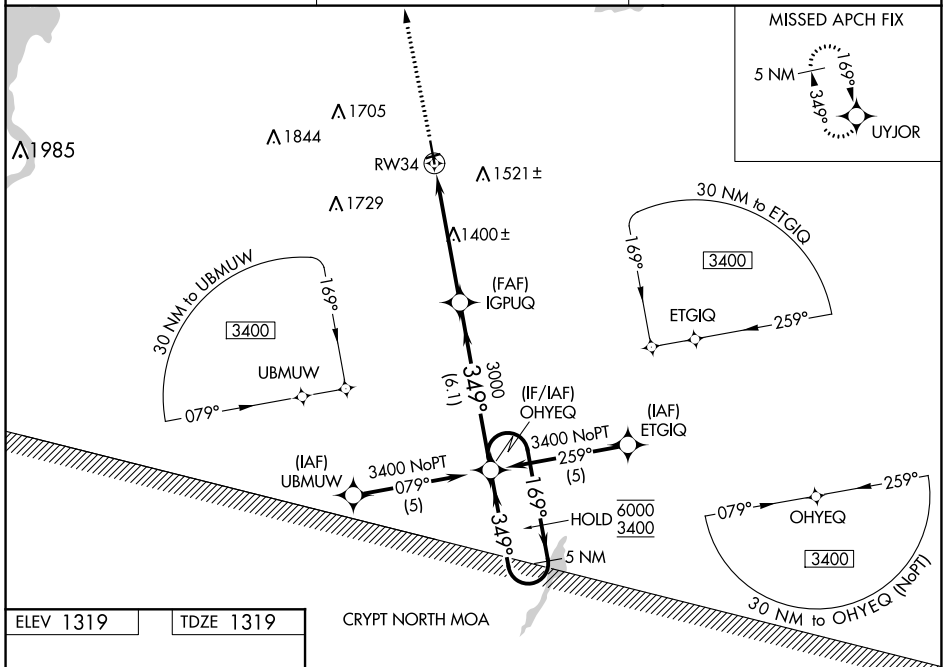
WAAS CH 82304 W34A	APP CRS 349°	Rwy Idg 4797 TDZE 1319 Apt Elev 1319
--	------------------------	---

RNAV (GPS) RWY 34

ESTHERVILLE MUNI (EST)

RNP APCH.	<p>⚠ Circling NA to Rwy 6 and 24. Baro-VNAV and VDP NA when using Jackson altimeter setting. For uncompensated Baro-VNAV systems, LNAV/VNAV NA below -17°C or above 54°C. When local altimeter not received, use Jackson altimeter setting and increase all DA/MDA 60 feet.</p>	MISSED APPROACH: Climb to 3400 direct UYJOR and hold.
-----------	--	---

ASOS 121.425	MINNEAPOLIS CENTER 127.75 257.7	UNICOM 122.975 (CTAF) 0
------------------------	---	--



3400 UYJOR VGSi and RNAV glidepath not coincident (VGSi Angle 3.00/TCH 39).

OHYEQ 5 NM Holding Pattern

*LNAV only

*1.1 NM to RW34

IGPUQ 3000

OHYEQ 5 NM Holding Pattern

169° $\begin{matrix} 6000 \\ 3400 \end{matrix}$

349° $\begin{matrix} 6000 \\ 3400 \end{matrix}$

3000

GP 3.00° TCH 42

CATEGORY	A	B	C	D
LPV DA	1569-1	250 (300-1)		NA
LNAV/VNAV DA	1629-1	310 (400-1)		NA
LNAV MDA	1700-1	381 (400-1)		NA
C CIRCLING	1720-1 401 (500-1)	1840-1 521 (600-1)		NA