

VOR/DME GON 110.85 Chan 45 (Y)	APP CRS 183°	Rwy Idg TDZE Apt Elev	N/A N/A 7
---	------------------------	--------------------------	--------------------------------------

VOR or GPS-A

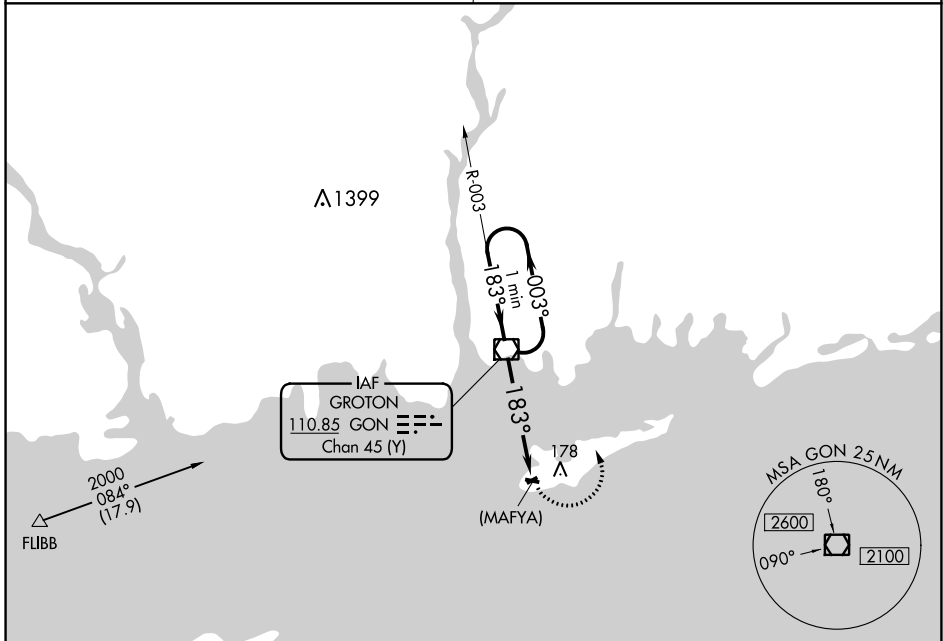
ELIZABETH FLD (ØB8)

▽ Use Groton-New London altimeter setting; when not received, use Block Island State altimeter setting.
△ NA

MISSED APPROACH: Climbing left turn to 2000 direct GON VOR/DME and hold.

PROVIDENCE APP CON ★
125.75 319.2

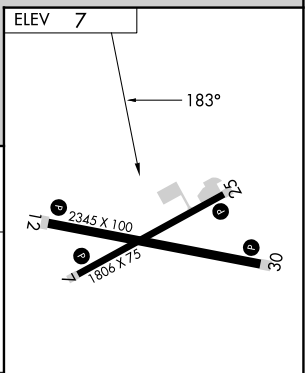
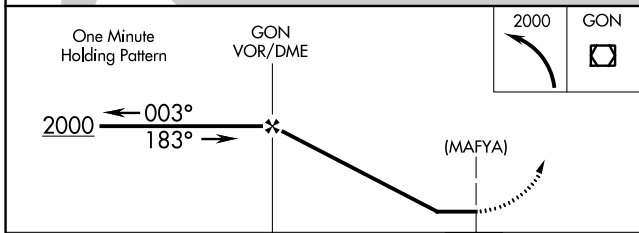
UNICOM
122.8 (CTAF) 0



NE-2, 26 DEC 2024 to 23 JAN 2025

NE-2, 26 DEC 2024 to 23 JAN 2025

NoPT for arrival on GON VOR/DME airway radial 024.



CATEGORY	A	B	C	D
CIRCLING	540-1 533 (600-1)	580-1 573 (600-1)	600-1½ 593 (600-1½)	NA
BLOCK ISLAND STATE ALTIMETER SETTING MINIMUMS				
CIRCLING	600-1 593 (600-1)	640-1 633 (700-1)	660-1¾ 653 (700-1¾)	NA

ELEV 7	183°
REIL Rwy 7, 12, 25 and 30	120
MIRL Rwys 7-25 and 12-30	80
FAF to MAP 4.7 NM	1805 X 75
Knots	60 90 120 150 180
Min:Sec	4:42 3:08 2:21 1:53 1:34