


WAAS CH 77811 W01A	APP CRS 010°	Rwy Idg 6502 TDZE 1133 Apt Elev 1182
--	------------------------	---

RNAV (GPS) RWY 1


FORD (IMT)

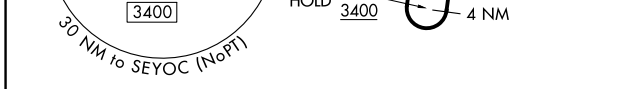
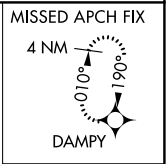
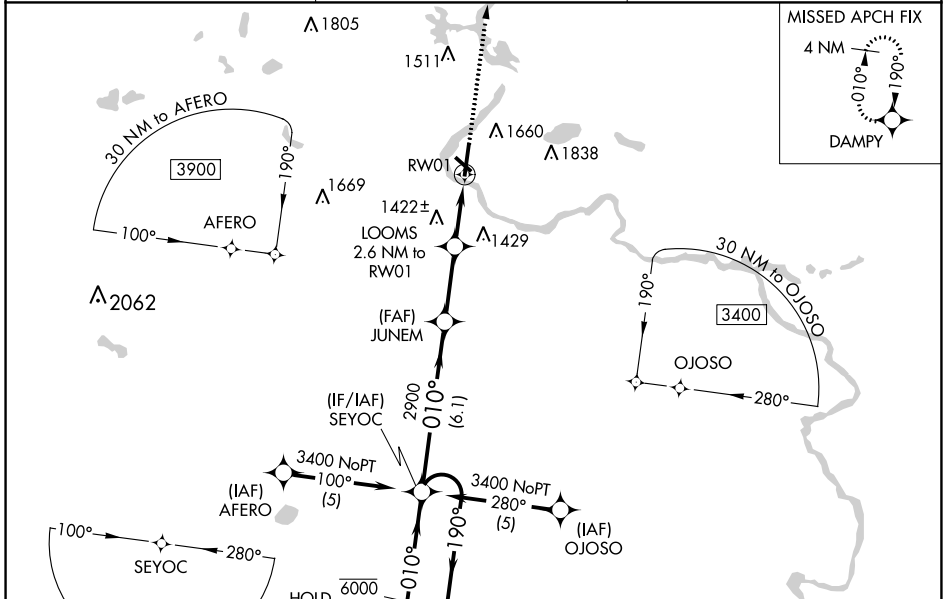
RNP APCH - GPS.





⚠ Circling NA northeast of Rwy 19 and 31. Circling Rwy 13, 19, 31 NA at night. Rwy 1 helicopter visibility reduction below 3/4 SM NA. Inop table does not apply to LPV. For uncompensated Baro-VNAV systems, LNAV/VNAV NA below -17°C or above 54°C. For inop ALS, increase LNAV Cat A and B visibility 1/4 SM.

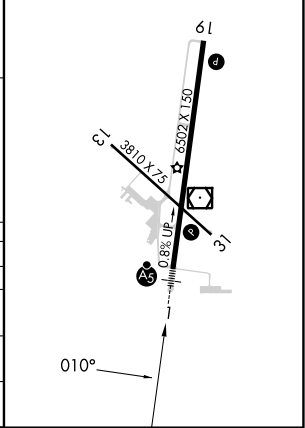
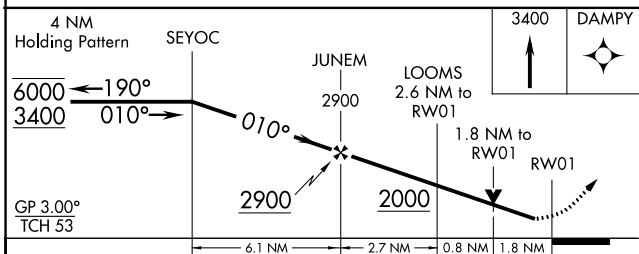
MALSRL 

MISSED APPROACH: Climb to 3400 direct DAMPY and hold.

ASOS 119.025	MINNEAPOLIS CENTER 121.25 322.5	UNICOM 122.8 (CTAF) 
------------------------	---	---



ELEV 1182 	TDZE 1133
MIRL Rwy 13-31 	
HIRL Rwy 1-19 	
REIL Rwy 19 and 31 	



CATEGORY	A	B	C	D
LPV DA	1383-3/4 250 (300-3/4)			
LNAV/VNAV DA	1806-2 673 (700-2)			
LNAV MDA	1760-3/4 627 (600-3/4)	1760-1 627 (600-1 1/4)	1760-1 627 (600-1 1/4)	1760-1 627 (600-1 1/2)
C CIRCLING	1760-1 578 (600-1)	1780-1 598 (600-1)	1780-1 598 (600-1 3/4)	1840-2 658 (700-2)

EC-1, 26 DEC 2024 to 23 JAN 2025

EC-1, 26 DEC 2024 to 23 JAN 2025