

APP CRS 190°	Rwy Idg 6376
	TDZE 1182
	Apt Elev 1182

RNAV (GPS) RWY 19

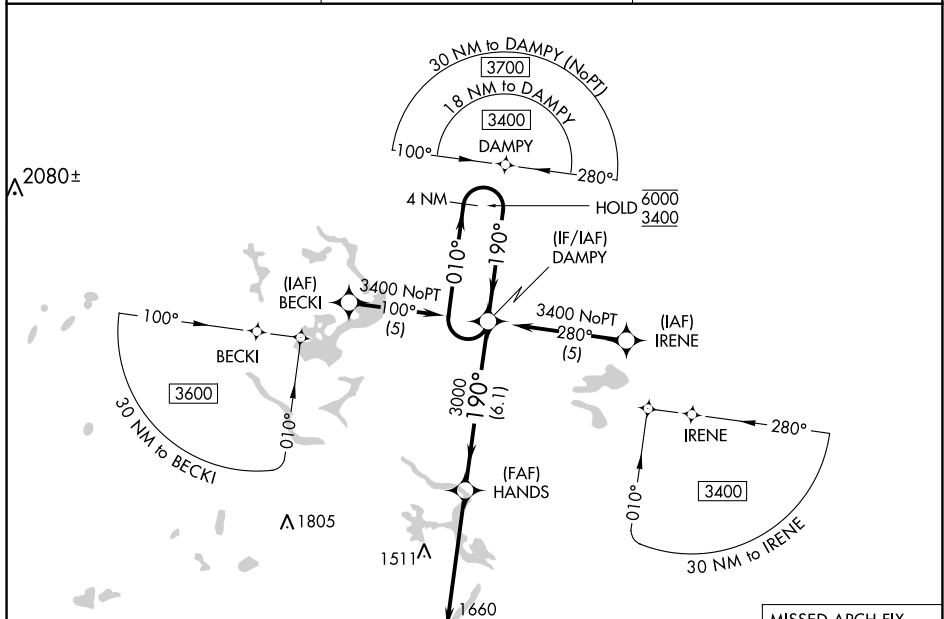
FORD (IMT)

RNP APCH-GPS.

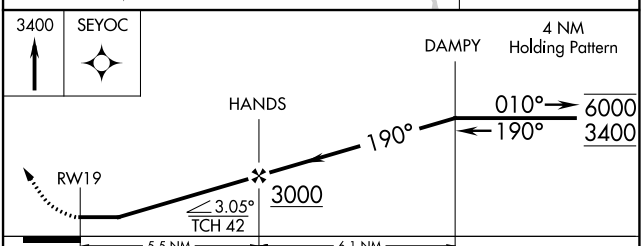
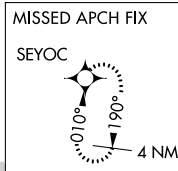
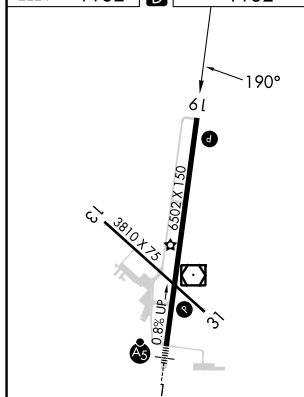
▼ Circling NA northeast of Rwy 19 and 31. Rwy 19 helicopter visibility reduction below 1 SM NA.
 ▲ Straight-in Rwy 19 NA at night, Circling Rwy 13, 19, 31 NA at night.

MISSED APPROACH:
 Climb to 3400 direct
 SEYOC and hold.

ASOS 119.025	MINNEAPOLIS CENTER 121.25 322.5	UNICOM 122.8 (CTAF) 0
------------------------	---	---------------------------------



ELEV 1182	D	TDZE 1182
-----------	----------	-----------



CATEGORY	A	B	C	D
LNAV MDA	1760-1	578 (600-1)	1760-1½	578 (600-1½)
C CIRCLING	1760-1 578 (600-1)	1780-1 598 (600-1)	1780-1½ 598 (600-1½)	1840-2 658 (700-2)

MIRL Rwy 13-31 **0**
 HIRL Rwy 1-19 **0**
 REIL Rwy 19 and 31 **0**

EC-1, 26 DEC 2024 to 23 JAN 2025

EC-1, 26 DEC 2024 to 23 JAN 2025