

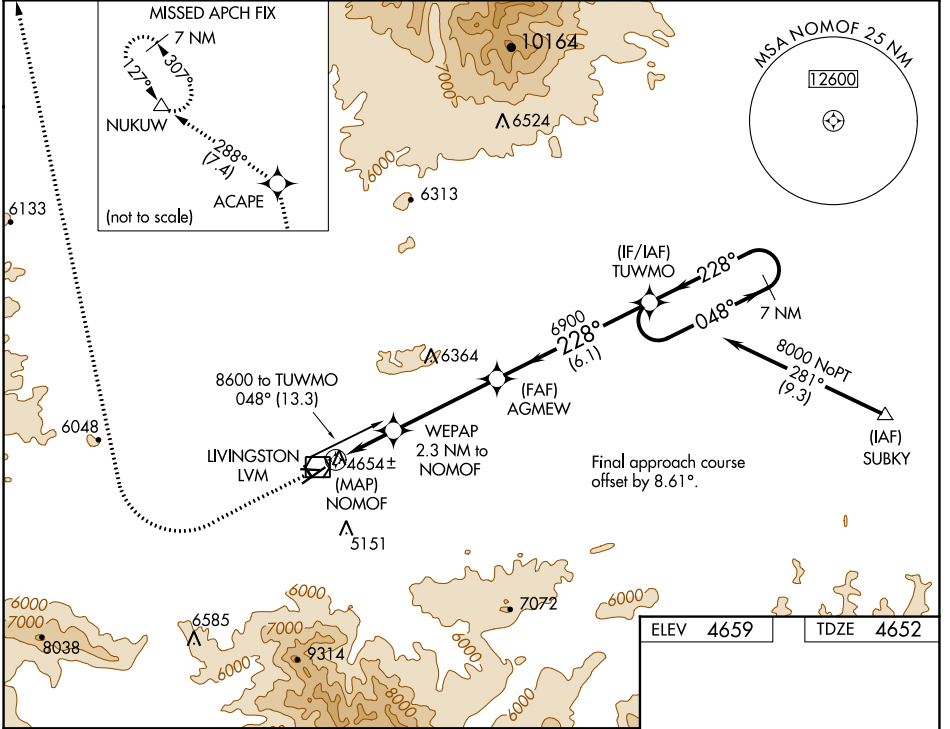
WAAS CH <b>48824</b> <b>W22A</b>	APP CRS <b>228°</b>	Rwy Idg TDZE <b>4652</b> Apt Elev <b>4659</b>
----------------------------------------	------------------------	-----------------------------------------------------

# RNAV (GPS) RWY 22

MISSION FLD (LVM)

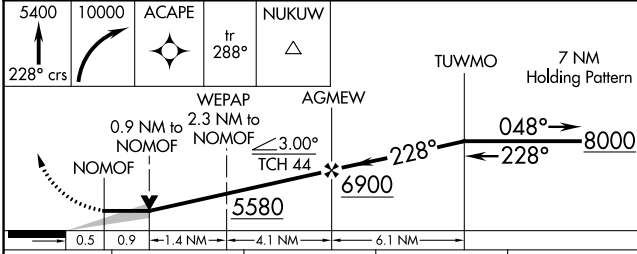
RNP APCH - GPS.	MISSED APPROACH: Climb to 5400 on course 228° then climbing right turn to 10000 direct ACAPE and on track 288° to NUKUW and hold.
<p>Circling NA for Cats C and D southeast of Rwy 4-22. Circling NA to Rwys 8-26 and 13-31. -29°C</p>	

ASOS <b>135.275</b>	BIG SKY APP CON ★ <b>119.55 235.775</b>	UNICOM <b>123.0 (CTAF)</b>
------------------------	--------------------------------------------	-------------------------------

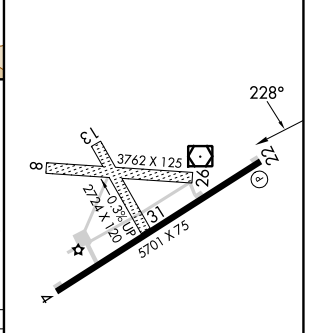


NW-1, 26 DEC 2024 to 23 JAN 2025

NW-1, 26 DEC 2024 to 23 JAN 2025



ELEV 4659	TDZE 4652
-----------	-----------



CATEGORY	A	B	C	D
LP MDA	5260-1	608 (700-1)	5260-1¾	608 (700-1¾)
LNAV MDA	5360-1	708 (800-1)	5360-2	708 (800-2)
CIRCLING	5360-1 701 (800-1)	5380-1 721 (800-1)	5400-2¼ 741 (800-2¼)	6700-3 2041 (2100-3)

REIL Rwy 22  
MIRL Rwy 4-22