

LOC I-TMB 108.7	APP CRS 093°	Rwy Idg 6000 TDZE 10 Apt Elev 10
---------------------------	------------------------	---

ILS or LOC RWY 9R

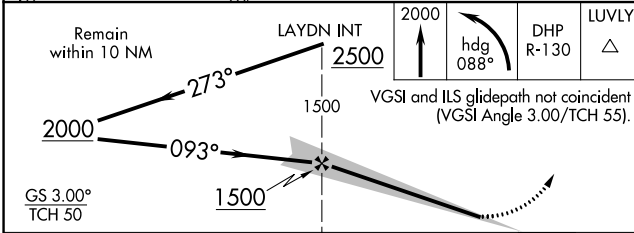
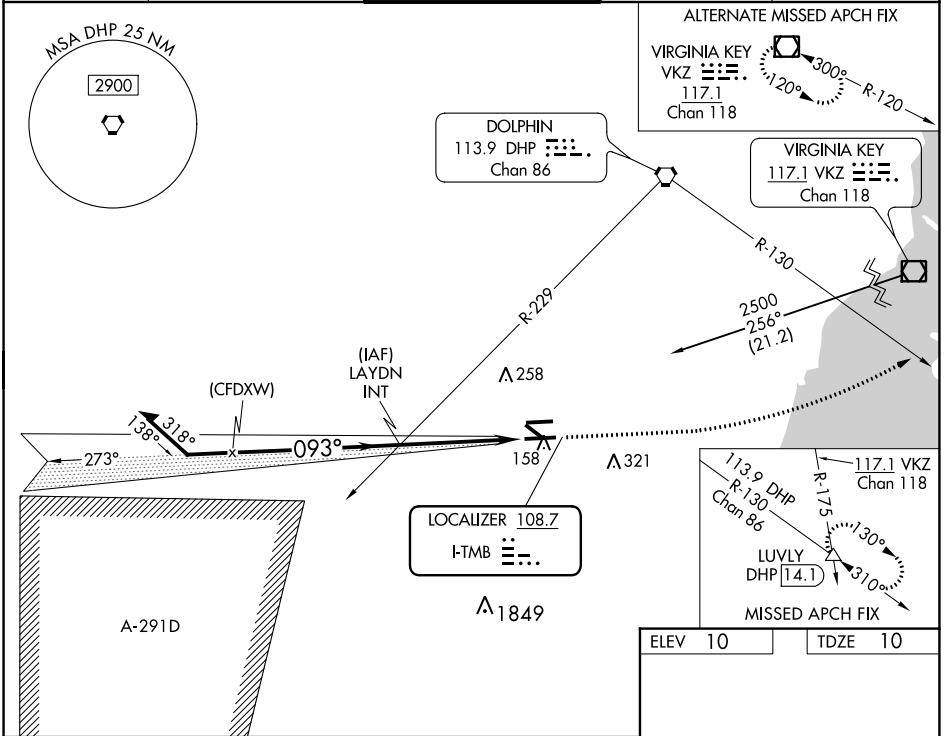
MIAMI EXEC (TMB)

⚠ Circling Rwy 13, 31 NA at night. For inop ALS when using Miami Intl altimeter setting, increase Cat C/D visibility to 1 $\frac{3}{8}$ SM. When local altimeter setting not received, use Miami Intl altimeter setting and increase S-ILS 9R DA to 237 feet and all MDA 40 feet, increase S-LOC 9R Cat C/D visibility $\frac{1}{8}$ SM.

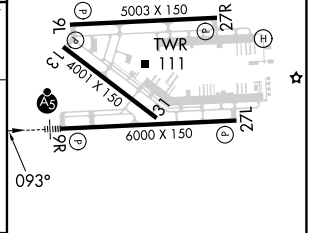
MALSR
A5

MISSED APPROACH: Climb to 2000 then left turn on heading 088° and DHP VORTAC R-130 to LUVLY INT/DHP 14.1 DME and hold.

ATIS 124.0	MIAMI APP CON 125.5 354.1	MIAMI EXEC TOWER* 118.9 (CTAF) 0	GND CON 121.7	CLNC DEL 133.0
----------------------	-------------------------------------	---	-------------------------	--------------------------



ELEV 10	TDZE 10
---------	---------



CATEGORY	A	B	C	D
S-ILS 9R		210- $\frac{1}{2}$	200 (200- $\frac{1}{2}$)	
S-LOC 9R	460- $\frac{1}{2}$	450 (500- $\frac{1}{2}$)	460- $\frac{7}{8}$	450 (500- $\frac{7}{8}$)
CIRCLING	460-1 450 (500-1)	560-1 550 (600-1)	640-1 $\frac{3}{4}$ 630 (700-1 $\frac{3}{4}$)	640-2 630 (700-2)

REIL Rwy 13	
HIRL Rwy 9R-27L 0	
MIRL Rwy 9L-27R	
MIRL Rwy 13-31 0	
FAF to MAP 4.5 NM	
Knots	60 90 120 150 180
Min:Sec	4:30 3:00 2:15 1:48 1:30

SE-3, 26 DEC 2024 to 23 JAN 2025

SE-3, 26 DEC 2024 to 23 JAN 2025