

MAYNR THREE DEPARTURE (RNAV)
(MAYNR3.MAYNR) 31OCT24

MIAMI DEP CON
125.5 354.1
ATIS
124.0
CLNC DEL
133.0
GND CON
121.7
MIAMI EXEC TOWER ★
118.9 (CTAF)

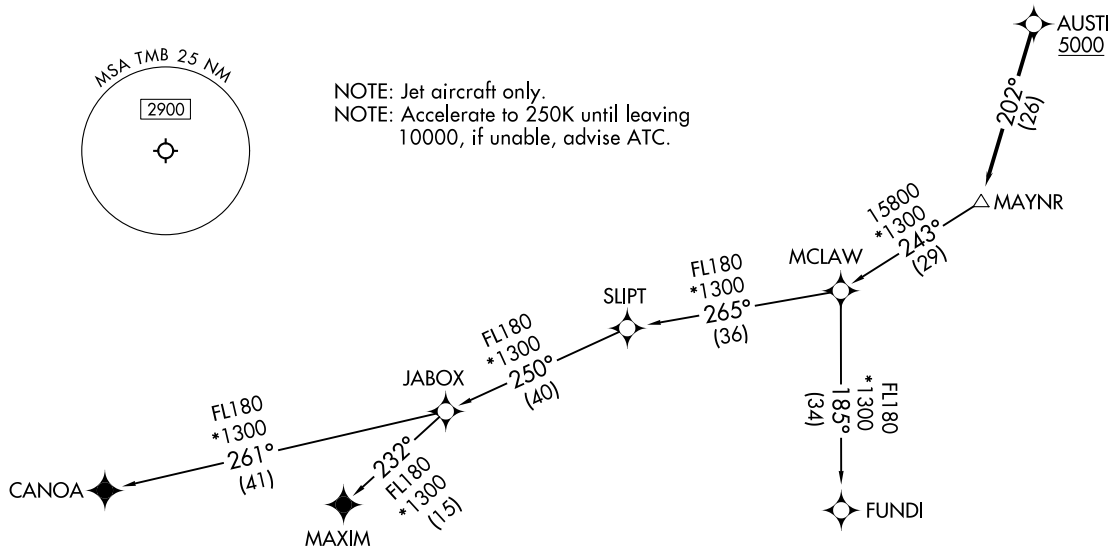
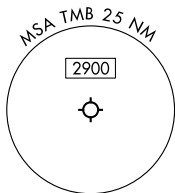
RNAV 1 - DME/DME/IRU or GPS.
From SLIPT to MAXIM: RNAV 1 - GPS.
From SLIPT to CANOA: RNAV 1 - GPS.
RADAR required for non-GPS equipped aircraft.
RADAR required.

**TOP ALTITUDE:
ASSIGNED BY ATC**

TAKEOFF MINIMUMS

- Rwy 9L: Standard with minimum climb of 500'/NM to 1300.
- Rwy 9R: Standard with minimum climb of 500'/NM to 1500.
- Rwy 13: Standard with minimum climb of 500'/NM to 1800.
- Rwy 27L: Standard with minimum climb of 500'/NM to 1900.
- Rwy 27R: Standard with minimum climb of 500'/NM to 1700.
- Rwy 31: Standard with minimum climb of 500'/NM to 1400.

NOTE: Jet aircraft only.
NOTE: Accelerate to 250K until leaving
10000, if unable, advise ATC.



NOTE: Chart not to scale.

(CONTINUED ON FOLLOWING PAGE)

(MAYNR3.MAYNR) 24305
MAYNR THREE DEPARTURE (RNAV)
AI-5349 (FAA)

MIAMI EXEC (TMB)
MIAMI, FLORIDA

MIAMI, FLORIDA
MIAMI EXEC (TMB)

MAYNR THREE DEPARTURE (RNAV)



DEPARTURE ROUTE DESCRIPTION

TAKEOFF RUNWAYS 9L/R, 13, 27L/R, 31: Climb on heading assigned by ATC for vectors to cross AUSTI at or above 5000, thence. . . .

. . . .on track 202° to MAYNR, then on assigned transition, maintain ATC assigned altitude. Expect clearance to filed altitude within 10 minutes after departure.

CANOA TRANSITION (MAYNR3.CANOA)

FUNDI TRANSITION (MAYNR3.FUNDI)

MAXIM TRANSITION (MAYNR3.MAXIM)

SE-3, 26 DEC 2024 to 23 JAN 2025

SE-3, 26 DEC 2024 to 23 JAN 2025