

MIAMI TWO DEPARTURE  
(MIA2.MIA) 26DEC24

RADAR and DME required.

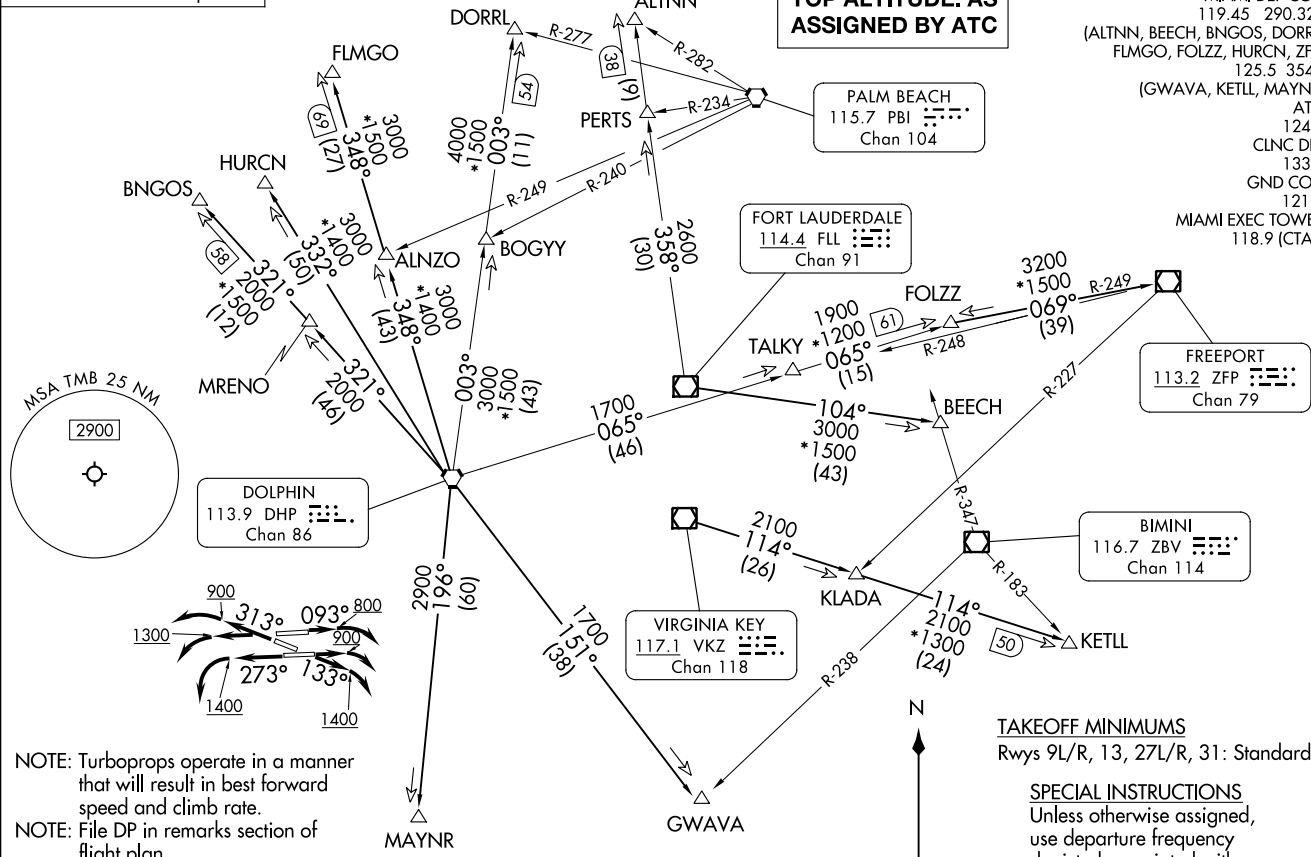
TOP ALTITUDE: AS  
ASSIGNED BY ATC

MIAMI DEP CON  
119.45 290.325  
(ALTNN, BEECH, BNGOS, DORRL,  
FLMGO, FOLZZ, HURCN, ZFP)  
125.5 354.1  
(GWAVA, KETLL, MAYNR)  
ATIS  
124.0  
CLNC DEL  
133.0  
GND CON  
121.7  
MIAMI EXEC TOWER \*  
118.9 (CTAF)

(MIA2.MIA) 24361  
MIAMI TWO DEPARTURE

AL-5349 (FAA)

MIAMI EXEC (TMB)  
MIAMI, FLORIDA



NOTE: Turboprops operate in a manner that will result in best forward speed and climb rate.  
NOTE: File DP in remarks section of flight plan.

**TAKEOFF MINIMUMS**  
Rwys 9L/R, 13, 27L/R, 31: Standard.

**SPECIAL INSTRUCTIONS**  
Unless otherwise assigned, use departure frequency depicted associated with the transition in clearance.

NOTE: Chart not to scale.

(CONTINUED ON FOLLOWING PAGE)

MIAMI, FLORIDA  
MIAMI EXEC (TMB)

# MIAMI TWO DEPARTURE



## DEPARTURE ROUTE DESCRIPTION

- TAKEOFF RUNWAY 9L: Climb on heading 093° to 800 before turning right, thence...
- TAKEOFF RUNWAY 9R: Climb on heading 093° to 900 before turning right, thence...
- TAKEOFF RUNWAY 13: Climb on heading 133° to 1400 before turning right, thence...
- TAKEOFF RUNWAY 27L: Climb on heading 273° to 1400 before turning left, thence...
- TAKEOFF RUNWAY 27R: Climb on heading 273° to 1300 before turning left, thence...
- TAKEOFF RUNWAY 31: Climb on heading 313° to 900 before turning left, thence...

... on transition, maintain ATC assigned altitude. Expect filed altitude 10 minutes after departure.

ALTNN TRANSITION (MIA2.ALTNN): From over FLL VOR/DME on FLL R-358 to ALTNN.

BEECH TRANSITION (MIA2.BEECH): From over FLL VOR/DME on FLL R-104 to BEECH.

BNGOS TRANSITION (MIA2.BNGOS): From over DHP VORTAC on DHP R-321 to BNGOS.

DORRL TRANSITION (MIA2.DORRL): From over DHP VORTAC on DHP R-003 to DORRL.

FLMGO TRANSITION (MIA2.FLMGO): From over DHP VORTAC on DHP R-348 to FLMGO.

FOLZZ TRANSITION (MIA2.FOLZZ): From over DHP VORTAC on DHP R-065 to FOLZZ.

FREEMPORT TRANSITION (MIA2.ZFP): From over DHP VORTAC on DHP R-065 to FOLZZ then on ZFP R-249 to ZFP VOR/DME.

GWAVA TRANSITION (MIA2.GWAVA): From over DHP VORTAC on DHP R-151 to GWAVA.

HURCN TRANSITION (MIA2.HURCN): From over DHP VORTAC on DHP R-332 to HURCN.

KETLL TRANSITION (MIA2.KETLL): From over VKZ VOR/DME on VKZ R-114 to KETLL.

MAYNR TRANSITION (MIA2.MAYNR): From over DHP VORTAC on DHP R-196 to MAYNR.

SE-3, 26 DEC 2024 to 23 JAN 2025

SE-3, 26 DEC 2024 to 23 JAN 2025