

WAAS CH <b>93615</b> <b>W27B</b>	APP CRS <b>273°</b>	Rwy Idg TDZE Apt Elev	<b>5003</b> <b>8</b> <b>10</b>
--	------------------------	-----------------------------	--------------------------------------

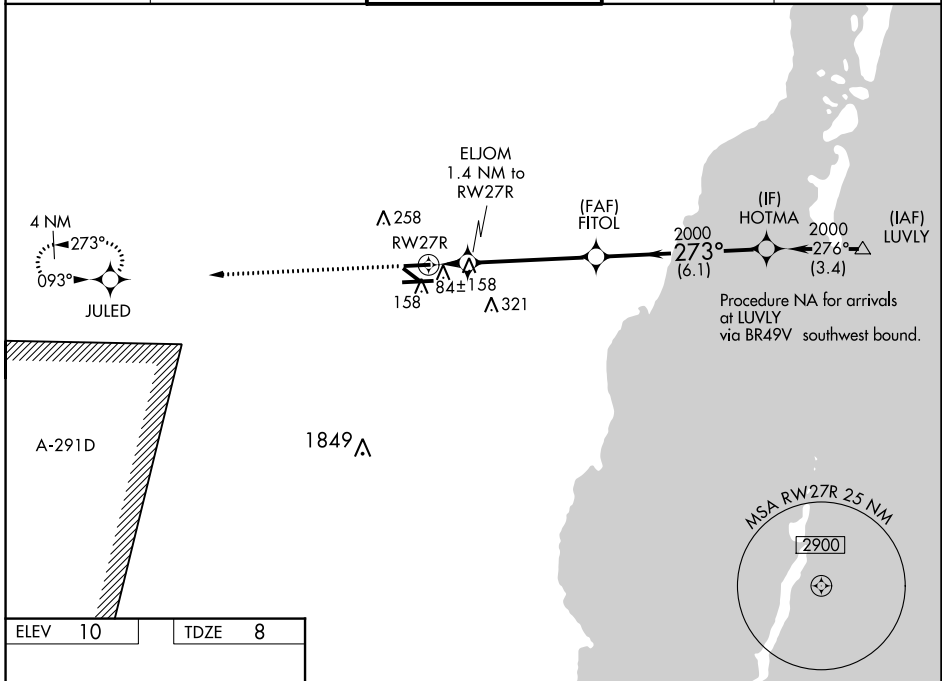
# RNAV (GPS) RWY 27R

MIAMI EXEC (TMB)

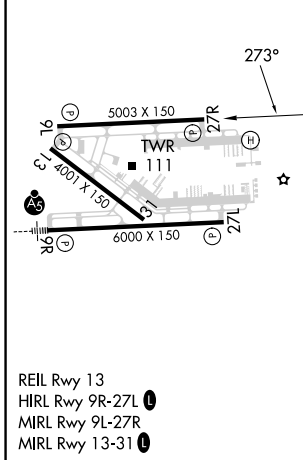
▼ For uncompensated Baro-VNAV systems, LNAV/VNAV NA below -1.5°C (5°F) or above 49°C (120°F). DME/DME RNP-0.3 NA. When local altimeter setting not received, use Miami Intl altimeter setting and adjust all DA 27 feet and all MDA 40 feet; increase LPV all Cats visibility ¼ mile, LNAV Cat D visibility ¼ mile, and Circling Cat D visibility ¼ mile. Baro-VNAV NA when using Miami Intl altimeter setting. Circling to Rwy 13, 31 NA at night.

▲ MISSED APPROACH: Climb to 2000 direct JULED and hold.

ATIS <b>124.0</b>	MIAMI APP CON <b>125.5 354.1</b>	MIAMI EXEC TOWER★ <b>118.9 (CTAF) 0</b>	GND CON <b>121.7</b>	CLNC DEL <b>133.0</b>
----------------------	-------------------------------------	--	-------------------------	--------------------------



ELEV 10	TDZE 8
---------	--------



2000	JULED	FITOL	HOTMA	
*LNAV only.			Procedure Turn NA	
	ELJOM 1.4 NM to RWY 27R		2000	
	RWY 27R	500*	GP 3.00° TCH 50	
	1.4 NM	4.6 NM	6.1 NM	
CATEGORY	A	B	C	D
LPV DA	258-¾		250 (300-¾)	
LNAV/VNAV DA	352-1¼		344 (400-1¼)	
LNAV MDA	420-1	412 (500-1)	420-1¼	412 (500-1¼)
CIRCLING	460-1 450 (500-1)	560-1 550 (600-1)	640-1¾ 630 (700-1¾)	640-2 630 (700-2)