

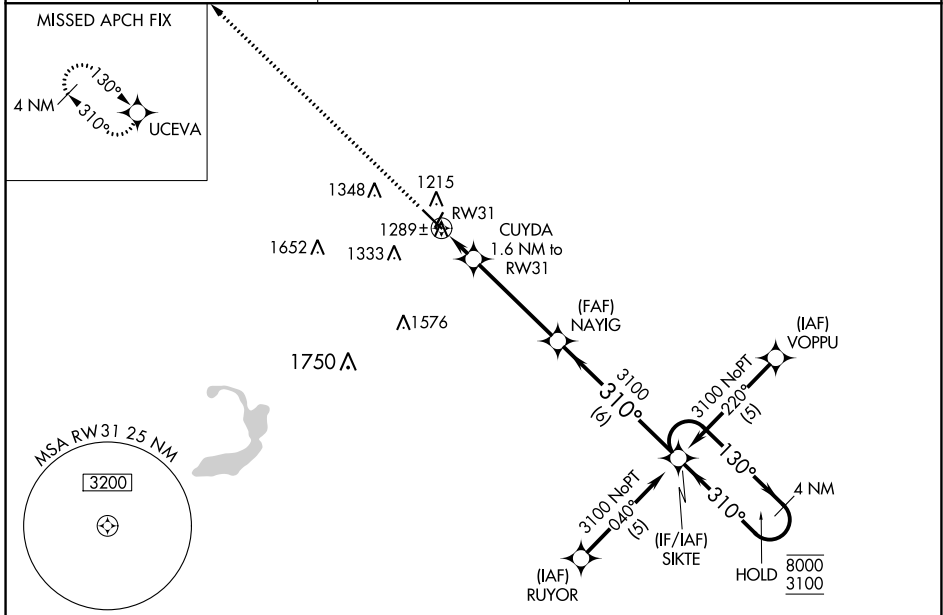
WAAS CH <b>90412</b> <b>W31A</b>	APP CRS <b>310°</b>	Rwy Idg TDZE <b>1162</b> Apt Elev <b>1162</b>	<b>5503</b> <b>1162</b> <b>1162</b>
--	------------------------	---	---

# RNAV (GPS) RWY 31

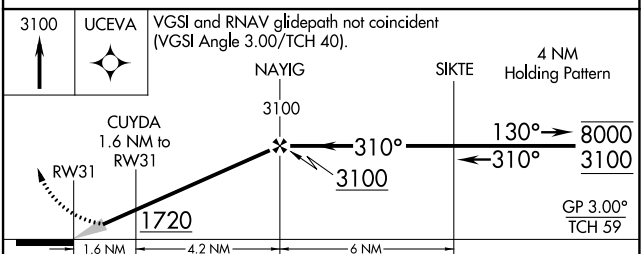
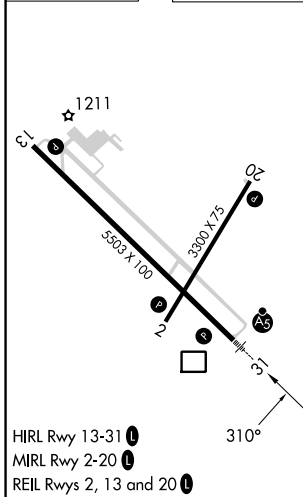
FAIRMONT MUNI (FRM)

RNP APCH-GPS.	MALSR 	MISSED APPROACH: Climb to 3100 direct UCEVA and hold.
<p><b>⚠</b> For uncompensated Baro-VNAV systems, procedure NA below -17° C or above 54°C. For inop ALS, increase LPV all Cats visibility to 7/8 SM and LNAV/VNAV all Cats visibility to 1 1/8 SM.</p>		

AWOS-3PT <b>120.025</b>	MINNEAPOLIS CENTER <b>127.75 257.7</b>	UNICOM <b>122.8 (CTAF) ①</b>
----------------------------	---	---------------------------------



ELEV 1162	TDZE 1162
-----------	-----------



CATEGORY	A	B	C	D
LPV DA	1467-1/2 305 (400-1/2)			
LNAV/VNAV DA	1581-3/4 419 (500-3/4)			
LNAV MDA	1560-1/2 398 (400-1/2)		1560-5/8 398 (400-5/8)	
<b>C</b> CIRCLING	1660-1 498 (500-1)		1980-2 1/2 818 (900-2 1/2)	1980-2 3/4 818 (900-2 3/4)

NC-1, 26 DEC 2024 to 23 JAN 2025

NC-1, 26 DEC 2024 to 23 JAN 2025