

WAAS CH 57905 W10A	APP CRS 103°	Rwy Idg 5001 TDZE 308 Apt Elev 310
--	------------------------	---

RNAV (GPS) RWY 10

CRISP COUNTY-CORDELE (CKF)

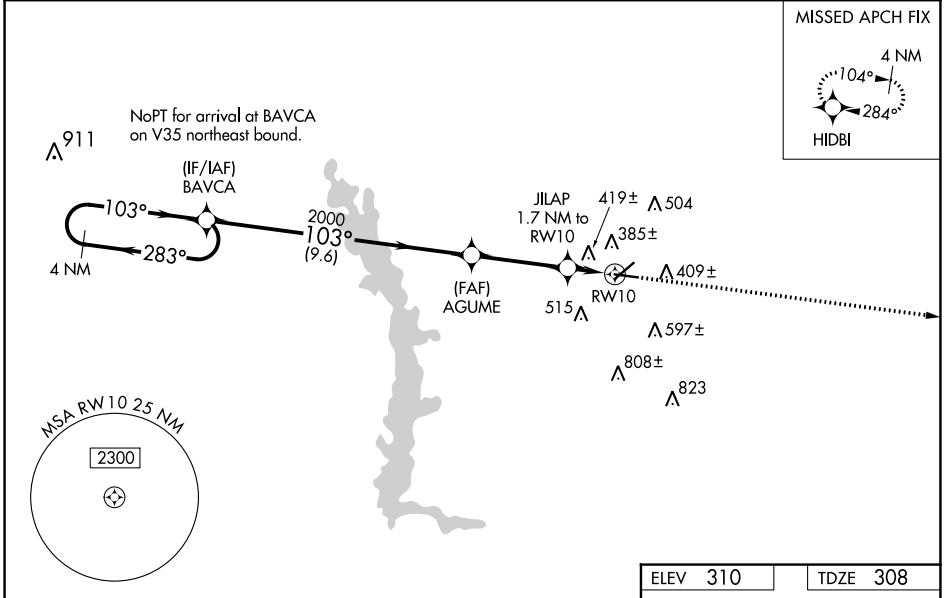
RNP APCH-GPS.

▼ For uncompensated Baro-VNAV systems, LNAV/VNAV NA below -15°C or above 54°C. Rwy 10 helicopter visibility reduction below 3/4 SM NA. Circling Rwy 28 NA at night. Inop table does not apply to LPV and LNAV all Cats. For inop ALS, increase LNAV/VNAV Cat A/B visibility to 1 1/2 SM.

ODALS

MISSED APPROACH: Climb to 2100 direct HIDBI and hold.

AWOS-3PT 119.325	JACKSONVILLE CENTER 125.75 363.075	UNICOM 123.050 (CTAF)
----------------------------	--	---------------------------------



SE-4, 26 DEC 2024 to 23 JAN 2025

SE-4, 26 DEC 2024 to 23 JAN 2025

ELEV 310		TDZE 308	
<p>VGSI and RNAV glidepath not coincident (VGSI Angle 3.00/TCH 42).</p> <p>4 NM Holding Pattern</p> <p>BAVCA</p> <p>AGUME</p> <p>JILAP 1.7 NM to RWY 10</p> <p>*LNAV only.</p> <p>2100</p> <p>HIDBI</p> <p>2000</p> <p>2000</p> <p>*880</p> <p>*1.1 NM to RWY 10</p> <p>GP 3.00° TCH 53</p> <p>9.6 NM</p> <p>3.5 NM</p> <p>0.6</p> <p>1.1 NM</p>			
CATEGORY	A	B	C
LPV DA		612-1	304 (400-1)
LNAV/DA VNAV		726-1 1/4	418 (300-1 1/4)
LNAV MDA		680-1	372 (400-1)
CIRCLING	820-1	510 (600-1)	1080-2 1/4 770 (800-2 1/4)
			1160-2 3/4 850 (900-2 3/4)

MIRL Rwy 10-28

REIL Rws 10 and 28