

APP CRS	Rwy Idg	N/A
180°	TDZE	N/A
	Apt Elev	329

# RNAV (GPS)-A

BRUNSWICK COUNTY (LVL)

RNP APCH.

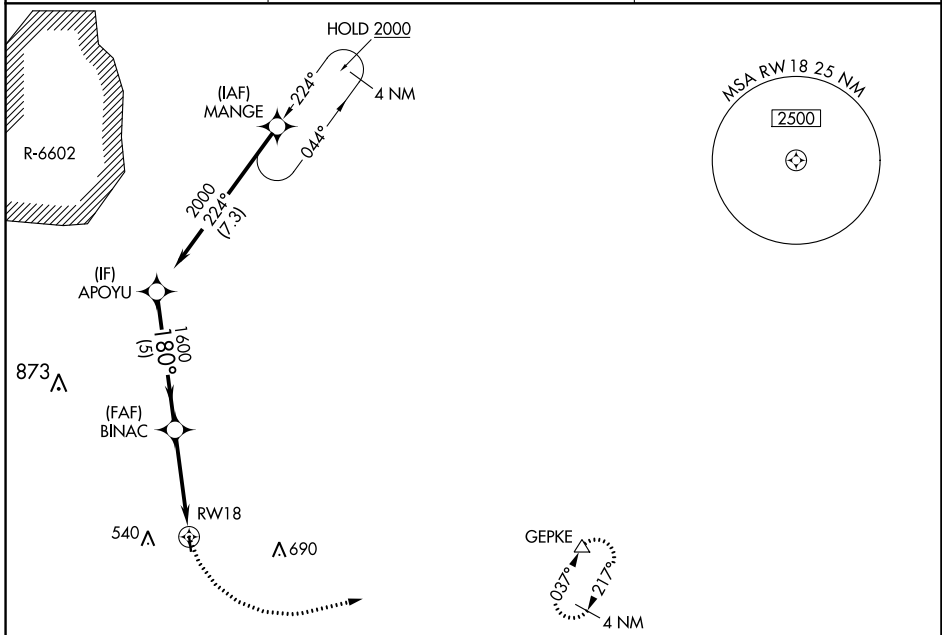
**▼** Procedure NA at night. Helicopter visibility reduction below 1 SM NA. When local altimeter setting not received, use South Hill altimeter setting and increase call MDA 60 feet.

**MISSED APPROACH:** Climbing left turn to 4000 direct GEPKE and hold, continue climb-in-hold to 4000.

AWOS-3  
**119.625**

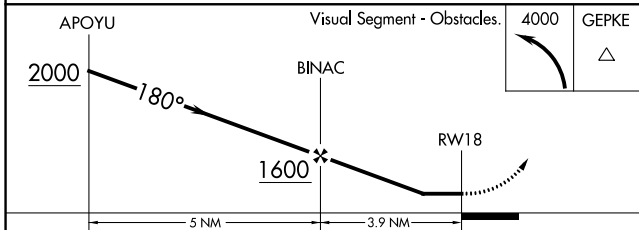
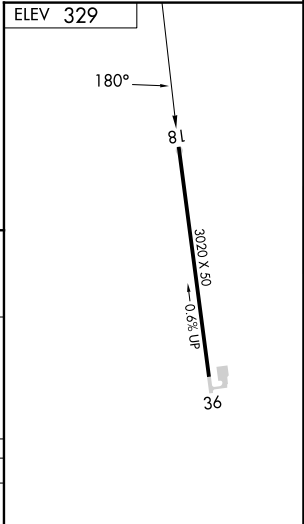
WASHINGTON APP CON  
**118.75 377.1**

UNICOM  
**122.8** (CTAF)



NE-3, 26 DEC 2024 to 23 JAN 2025

NE-3, 26 DEC 2024 to 23 JAN 2025



CATEGORY	A	B	C	D
<b>CIRCLING</b>	1340-3	1011 (1100-3)	NA	