

NDB BMW 404	APP CRS 312°	Rwy Idg TDZE Apt Elev	4600 922 934
-----------------------	------------------------	-----------------------------	---

NDB RWY 31

BARROW COUNTY (WDR)

⚠ For inop ALS, increase S-31 Cat A/B visibility to 1 SM. Circling Rwy 13, 23 NA at night. Rwy 31 helicopter visibility reduction below $\frac{3}{4}$ SM NA.

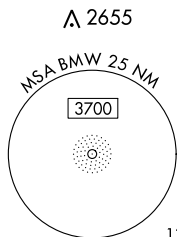


MISSED APPROACH: Climbing right turn to 2500 direct BMW NDB and hold.

AWOS-3
118.575

ATLANTA APP CON ★
132.475 291.1

UNICOM
123.0 (CTAF) 0



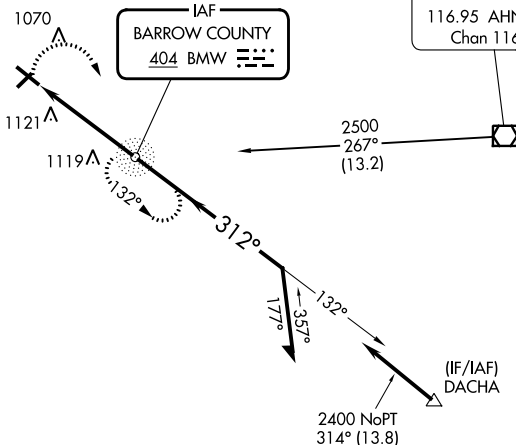
△ 2655

1365 △

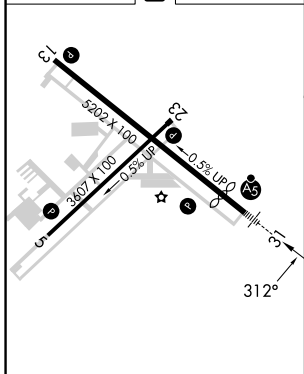
△ 1160

△ 1895

△ 2549



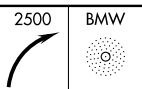
ELEV 934 **D** TDZE 922



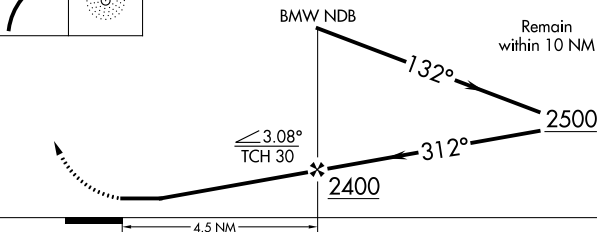
HIRL Rwy 13-31
MIRL Rwy 5-23

FAF to MAP 4.5 NM

Knots	60	90	120	150	180
Min:Sec	4:30	3:00	2:15	1:48	1:30



VGS and descent angles not coincident (VGS Angle 3.00°/TCH 45').



CATEGORY	A	B	C	D
S-31	1480- $\frac{3}{4}$	558 (600- $\frac{3}{4}$)	1480- $\frac{1}{8}$	558 (600- $\frac{1}{8}$)
CIRCLING	1480-1 546 (600-1)	1580-1 646 (700-1)	1660-2 726 (800-2)	1660-2 $\frac{1}{4}$ 726 (800-2 $\frac{1}{4}$)

SE-4, 26 DEC 2024 to 23 JAN 2025

SE-4, 26 DEC 2024 to 23 JAN 2025