

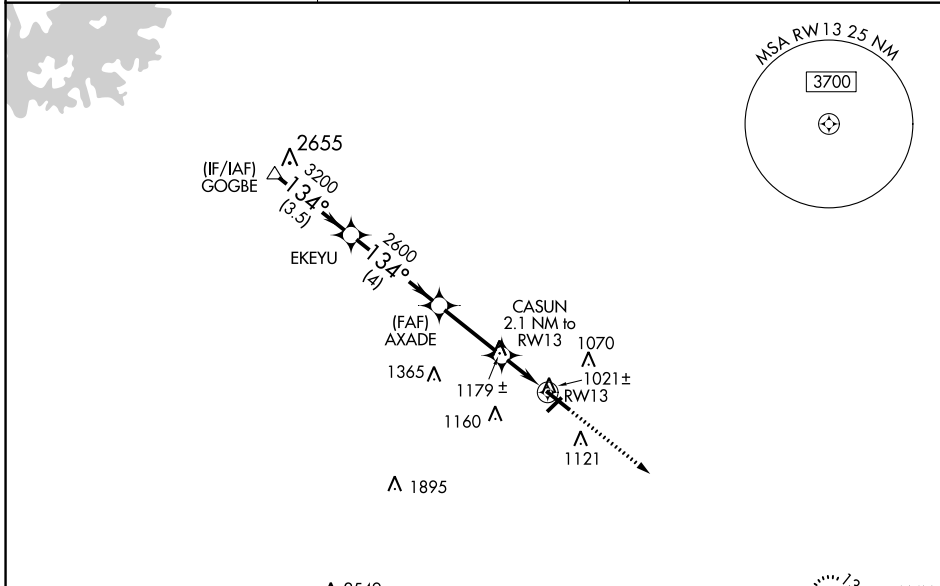
WAAS CH 90305 W13A	APP CRS 134°	Rwy Idg TDZE Apt Elev	5100 933 934
--	------------------------	-----------------------------	---

RNAV (GPS) RWY 13

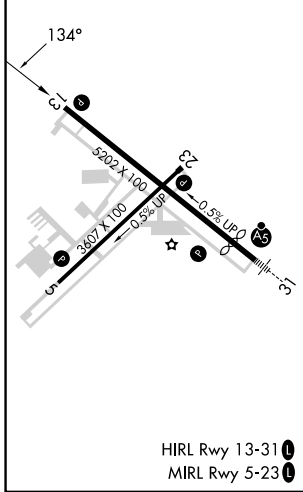
BARROW COUNTY (WDR)

RNP APCH.	MISSED APPROACH: Climb to 3000 direct CADEB and hold.
-----------	---

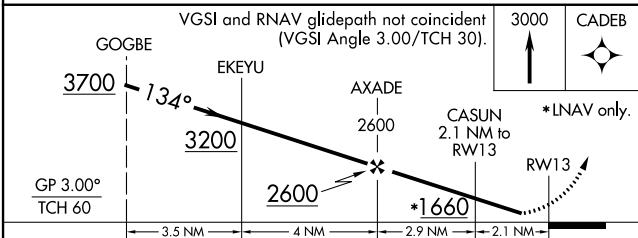
AWOS-3 118.575	ATLANTA APP CON ★ 132.475 291.1	UNICOM 123.0 (CTAF) 0
--------------------------	---	---------------------------------



ELEV 934	D	TDZE 933
----------	----------	----------



△ 2549	CADEB 4 NM
--------	------------



CATEGORY	A	B	C	D
LPV DA		1207-1	274 (300-1)	
LNAV/VNAV DA		1422-1 ³ / ₈	489 (500-1 ³ / ₈)	
LNAV MDA		1300-1	367 (400-1)	
CIRCLING	1400-1 466 (500-1)	1580-1 646 (700-1)	1660-2 726 (800-2)	1660-2 ¹ / ₄ 726 (800-2 ¹ / ₄)

SE-4, 26 DEC 2024 to 23 JAN 2025

SE-4, 26 DEC 2024 to 23 JAN 2025