

JOJO FIVE DEPARTURE (RNAV)

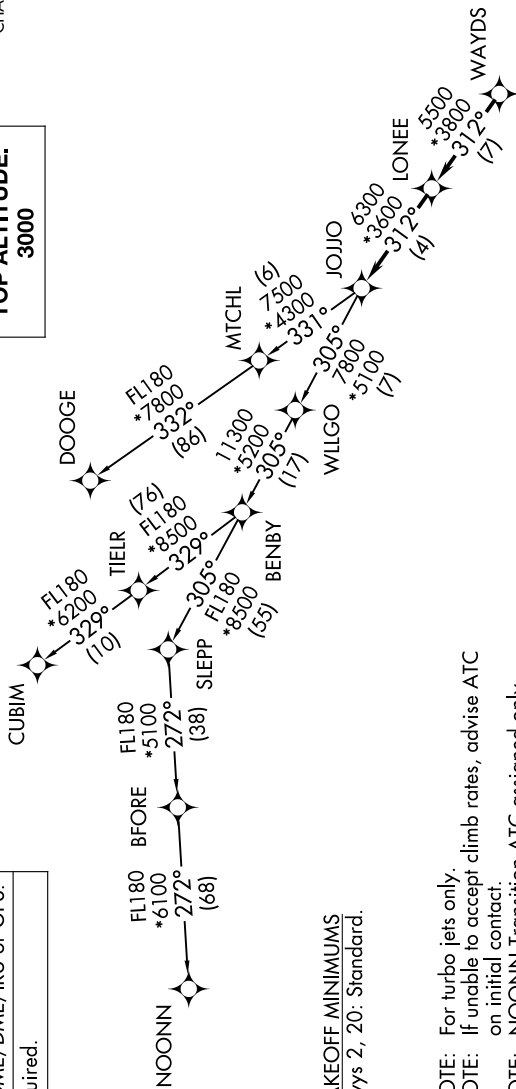
ROCK HILL/YORK COUNTY/BRYANT FLD (UZA)
AL-5361 (FAA) ROCK HILL, SOUTH CAROLINA

CHARLOTTE DEP CON
120.05 307.8
ASOS
120.775
UNICOM (CTAF)
123.05

**TOP ALTITUDE:
3000**

RNAV 1 - DME/DME/IRU or GPS.
RADAR required.

SE-2, 26 DEC 2024 to 23 JAN 2025



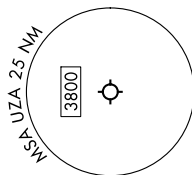
TAKEOFF MINIMUMS
Rwys 2, 20: Standard.

- NOTE: For turbo jets only.
- NOTE: If unable to accept climb rates, advise ATC on initial contact.
- NOTE: NOONN Transition ATC assigned only.
- NOTE: Upon reaching 10000 MSL, accelerate to and maintain 280K, if unable advise ATC.

DEPARTURE ROUTE DESCRIPTION

Climb on heading assigned by ATC, on RADAR vectors to WAYDS, then on depicted route to JOJO. Then on assigned transition. Maintain 3000, expect filed altitude within 10 minutes after departure.

- CUBIM TRANSITION (JOJO5.CUBIM)
- DOOGE TRANSITION (JOJO5.DOOGE)
- NOONN TRANSITION (JOJO5.NOONN)



NOTE: Chart not to scale.

JOJO FIVE DEPARTURE (RNAV)