

WAAS CH 90522 W36A	APP CRS 008°	Rwy Idg TDZE Apt Elev	5000 285 285
--	------------------------	-----------------------------	---

RNAV (GPS) RWY 36

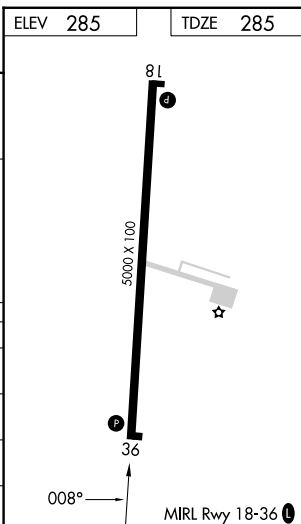
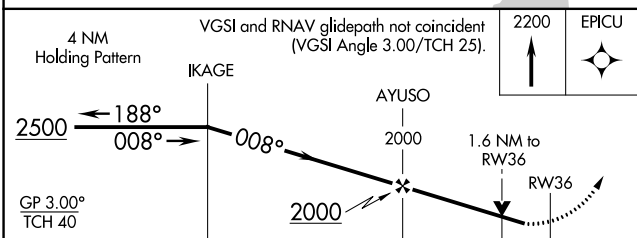
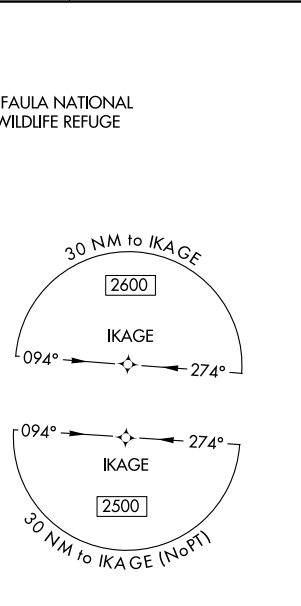
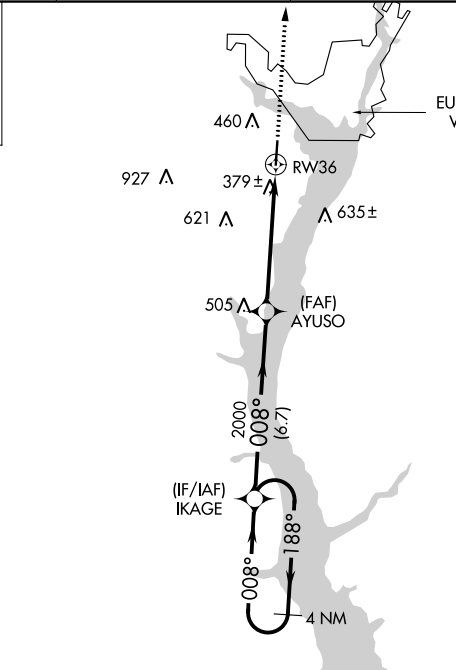
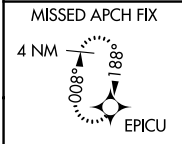
WEEDON FLD (EUF)

RNP APCH - GPS.

NA When local altimeter setting not received, use Columbus, GA altimeter setting and increase LPV DA to 633 feet and all visibilities $\frac{1}{8}$ SM; increase LNAV/VNAV DA to 782 feet; increase all MDAs 40 feet and LNAV and Circling visibility Cats C and D $\frac{1}{4}$ SM. Rwy 36 helicopter visibility reduction below $\frac{3}{4}$ SM NA. For uncompensated Baro-VNAV systems, LNAV/VNAV NA below -15°C or above 54°C. Baro-VNAV and VDP NA when using Columbus, GA altimeter setting.

MISSED APPROACH:
Climb to 2200 direct EPICU and hold.

ASOS 128.325	ATLANTA APP CON * 125.5 323.1	CLNC DEL 134.25 339.8	UNICOM 122.8 (CTAF)
------------------------	---	---------------------------------	-------------------------------



CATEGORY	A	B	C	D
LPV DA	600-1		315 (400-1)	
LNAV/VNAV DA	749-1 $\frac{3}{8}$		464 (500-1 $\frac{3}{8}$)	
LNAV MDA	800-1 515 (600-1)		800-1 $\frac{3}{8}$ 515 (600-1 $\frac{3}{8}$)	
CIRCLING	920-1 635 (700-1)		1060-2 $\frac{1}{4}$ 775 (800-2 $\frac{1}{4}$) 1060-2 $\frac{1}{2}$ 775 (800-2 $\frac{1}{2}$)	

SE-4, 26 DEC 2024 to 23 JAN 2025

SE-4, 26 DEC 2024 to 23 JAN 2025