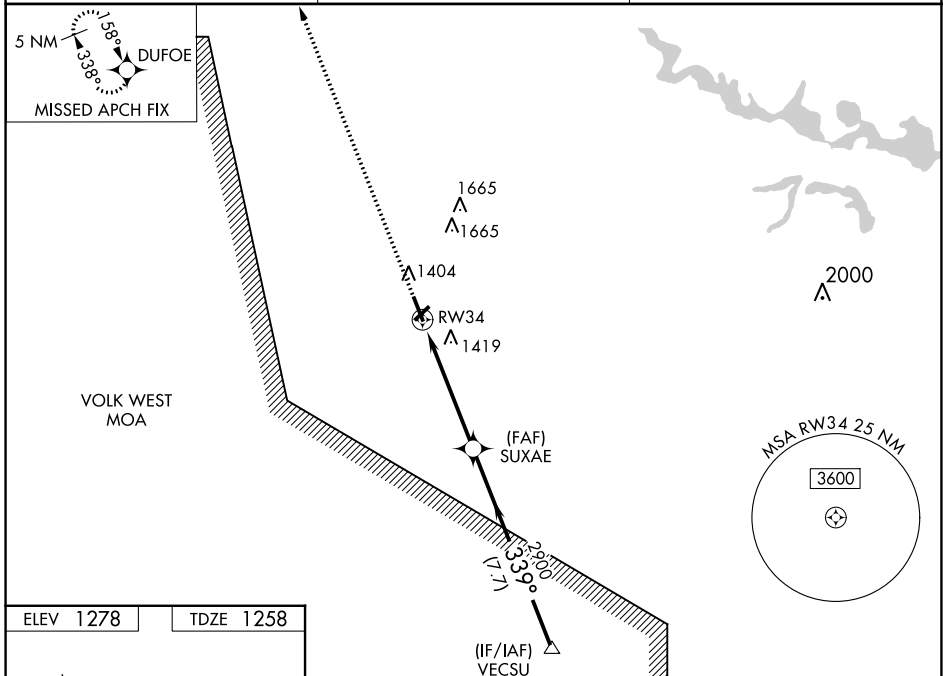


WAAS CH 58101 W34A	APP CRS 339°	Rwy Idg TDZE 1258 Apt Elev 1278	5002
--	------------------------	---	-------------

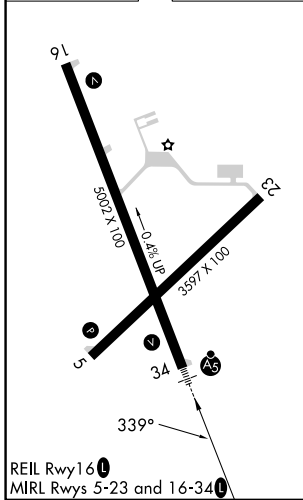
RNAV (GPS) RWY 34

MARSHFIELD MUNI (MFI)

<p>For inoperative MALSR increase LPV all Cats visibility to 1, increase LNAV Cats A and B to 1 and Cat D to 1¼. If local altimeter setting not received, use Central Wisconsin altimeter setting and increase all DAs/MDAs 60 feet. VDP and Baro-VNAV NA when using Central Wisconsin altimeter setting. For uncompensated Baro-VNAV systems, LNAV/VNAV NA below -17° C (2° F) or above 46° C (115° F). DME/DME RNP-0.3 NA.</p>		<p>MALSR</p>	<p>MISSED APPROACH: Climb to 3000 direct DUFOE and hold.</p>
ASOS 121.575	MINNEAPOLIS CENTER 124.4 317.7	UNICOM 123.0 (CTAF)	



ELEV 1278	TDZE 1258
-----------	-----------



	3000	DUFOE	SUXAE	VECSU	Procedure Turn NA
	↑				
* LNAV only		* 1.2 NM to RWY 34			
		RWY 34	2900	2900	GP 3.00° TCH 42
		1.2	3.8 NM	7.7 NM	
CATEGORY	A	B	C	D	
LPV DA	1508-¾		250 (300-¾)		
LNAV/VNAV DA	1718-1¼		460 (500-1¼)		
LNAV MDA	1680-¾		422 (500-¾)		1680-1 422 (500-1)
CIRCLING	1760-1¾		482 (500-1¾)		2020-2½ 742 (800-2½)

EC-3, 26 DEC 2024 to 23 JAN 2025

EC-3, 26 DEC 2024 to 23 JAN 2025