

WAAS CH <b>50532</b> <b>W05A</b>	APP CRS <b>046°</b>	Rwy Idg TDZE <b>1258</b> Apt Elev <b>1278</b>
--	------------------------	---

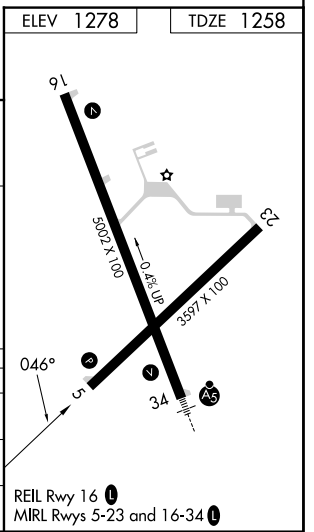
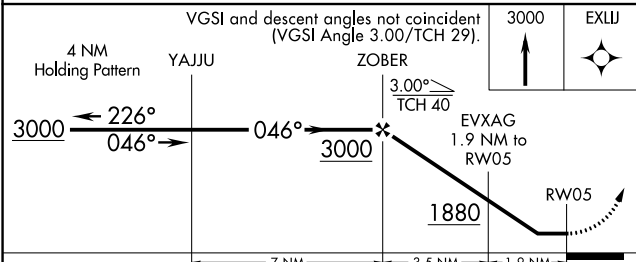
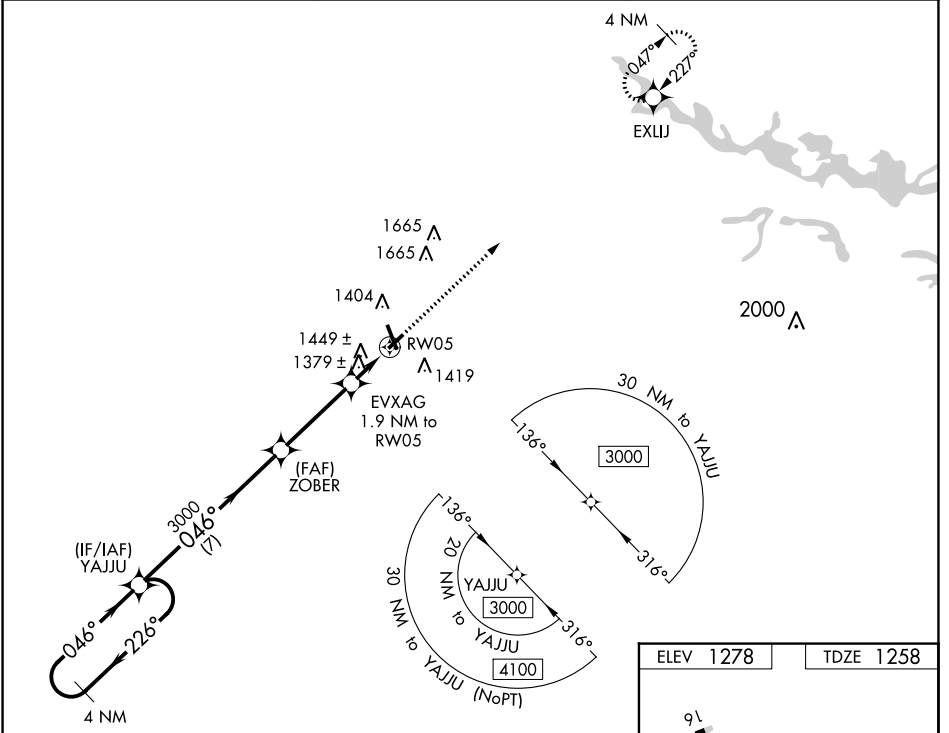
# RNAV (GPS) RWY 5

MARSHFIELD MUNI (MFI)

**▽** DME/DME RNP-0.3 NA. When local altimeter setting not received, use Central Wisconsin altimeter setting and increase all MDA 60 feet, increase visibility LP Cat C/D ¼.

**⚠** MISSED APPROACH: Climb to 3000 direct EXLJ and hold.

ASOS <b>121.575</b>	MINNEAPOLIS CENTER <b>124.4 317.7</b>	UNICOM <b>123.0 (CTAF) 0</b>
------------------------	--	---------------------------------



	7 NM		3.5 NM		1.9 NM	
CATEGORY	A	B	C	D		
LP MDA	1640-1	382 (400-1)	1640-1½	382 (500-1½)		
LNAMV MDA	1700-1	442 (500-1)	1700-1¾	442 (500-1¾)		
<b>C</b> CIRCLING	1760-1	482 (500-1)	2020-2¼ 742 (800-2¼)	2020-2½ 742 (800-2½)		

EC-3, 26 DEC 2024 to 23 JAN 2025

EC-3, 26 DEC 2024 to 23 JAN 2025