

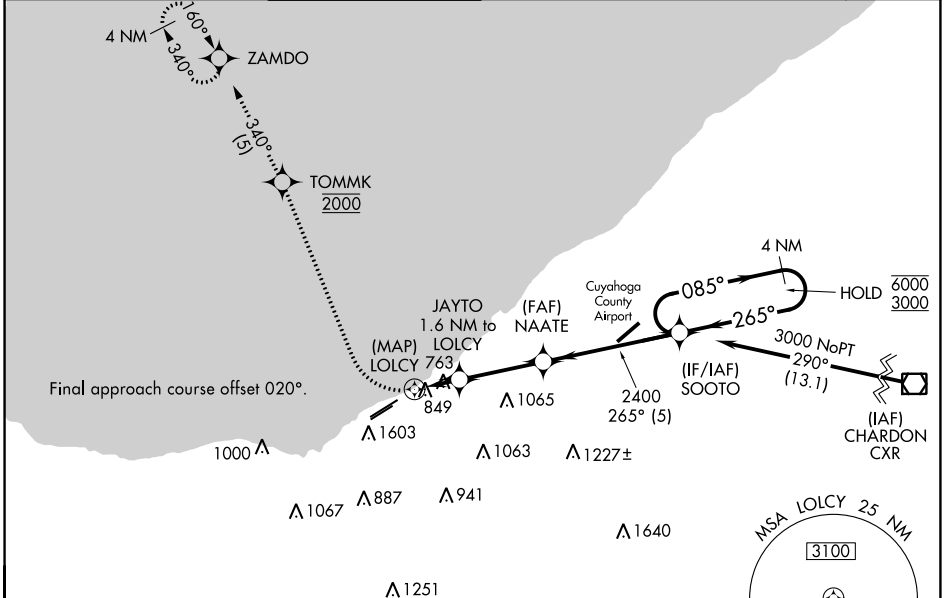
WAAS CH <b>77621</b> <b>W24A</b>	APP CRS <b>265°</b>	Rwy Idg <b>6003</b> TDZE <b>583</b> Apt Elev <b>584</b>
--	------------------------	---

# RNAV (GPS) RWY 24R

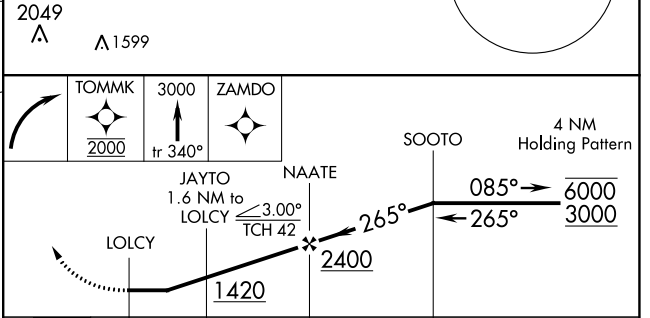
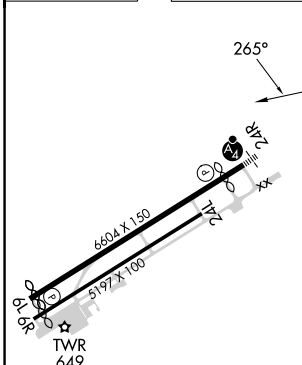
BURKE LAKEFRONT (BKL)

RNP APCH.	<p><b>∇</b> Circling Rwy 6R NA at night. <b>⚠</b> Rwy 24R helicopter visibility reduction below ¾ SM NA. Circling NA SE of Rwy 6R and 24L. For inop ALS, increase LNAV Cat C/D visibility to 1¾ SM.</p>	<p>MALSF</p>	<p>MISSED APPROACH: Climbing right turn direct TOMMK, cross TOMMK at 2000, then climb to 3000 on track 340° to ZAMDO and hold.</p>
-----------	---	--------------	--

ATIS <b>125.25</b>	CLEVELAND APP CON <b>125.35 346.325</b>	LAKEFRONT TOWER ★ <b>124.3 (CTAF) 0 339.8</b>	GND CON <b>121.9 339.8</b>	CLNC DEL <b>339.8</b>	CLNC DEL <b>121.9</b> (when twr closed)	UNICOM <b>122.95 0</b>
-----------------------	--	--	-------------------------------	--------------------------	---	---------------------------



ELEV 584	<b>D</b>	TDZE 583
----------	----------	----------



	0.9	1.6 NM	3.1 NM	5 NM	
CATEGORY	A	B	C	D	
LP MDA	1020-¾	437 (500-¾)	1020-1	437 (500-1)	
LNAV MDA	1100-¾	517 (600-¾)	1100-1½	517 (600-1½)	
<b>C</b> CIRCLING	1100-1	516 (600-1)	1140-1½	1200-2	556 (600-1½) 616 (700-2)

EC-2, 26 DEC 2024 to 23 JAN 2025

EC-2, 26 DEC 2024 to 23 JAN 2025