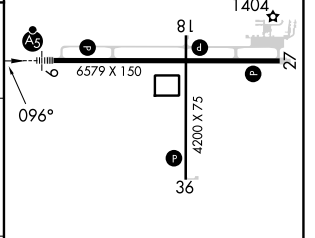
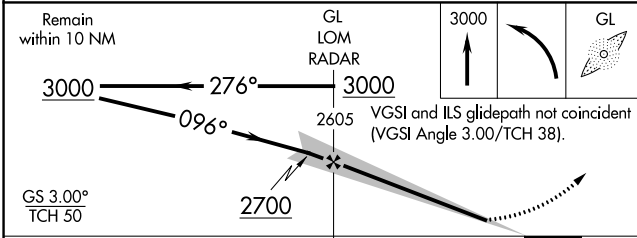
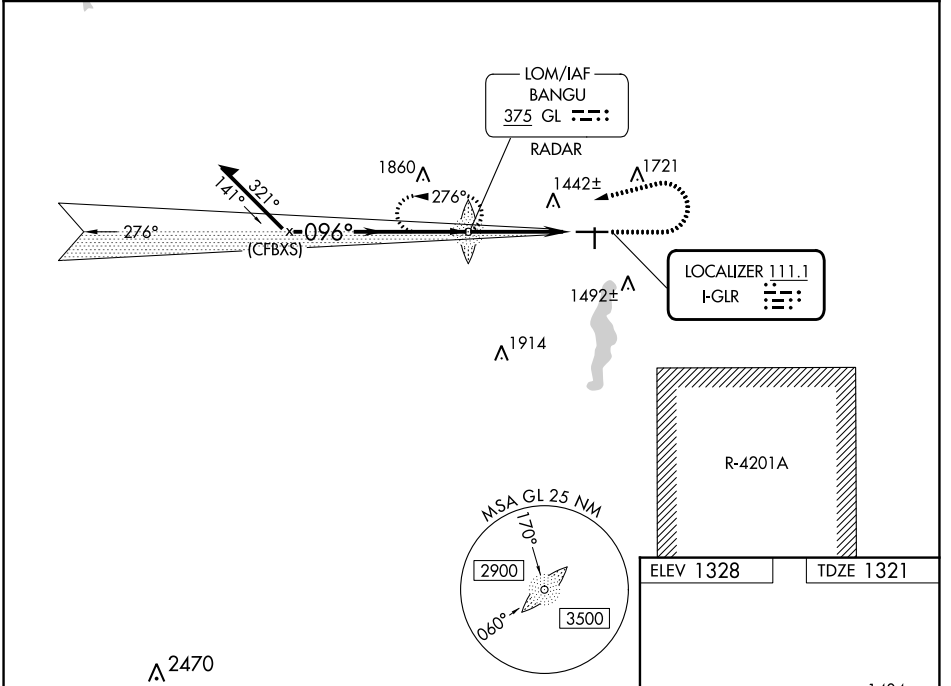


LOC I-GLR 111.1	APP CRS 096°	Rwy ldg 6579 TDZE 1321 Apt Elev 1328
---------------------------	------------------------	--

ILS or LOC RWY 9
GAYLORD RGNL (G.L.R.)

<p>ADF required. RADAR required for procedure entry.</p> <p>▽ Circling Rwy 18, 36 NA at night. When local altimeter setting not received, use GOV altimeter setting and increase S-ILS 9 DA to 1591 feet; increase all MDAs 80 feet and S-LOC 9 visibility Cat C and D ¾ SM, and Circling visibility Cat C and D ¼ SM. For inop ALS when using GOV altimeter setting, increase S-ILS 9 all Cats visibility to ¾ SM and S-LOC 9 Cats C and D visibility to 1¼ SM. For inop ALS, increase S-LOC 9 Cats C and D visibility ¾ SM.</p>	<p>MALSRL </p>	<p>MISSED APPROACH: Climb to 3000 then left turn direct BANGU LOM and hold.</p>
--	--------------------	---

ASOS 118.375	MINNEAPOLIS CENTER 134.6 354.05	UNICOM 122.8 (CTAF) 0
------------------------	---	---------------------------------



CATEGORY	A	B	C	D
S-ILS 9	1521-1/2		200 (200-1/2)	
S-LOC 9	1860-1/2	539 (600-1/2)	1860-1	539 (600-1)
□ CIRCLING	1860-1 532 (600-1)	1940-1 612 (700-1)	2040-2 712 (800-2)	2040-2 1/4 712 (800-2 1/4)

HIRL Rwy 9-27 0
MIRL Rwy 18-36 0
REIL Rws 18, 27 and 36 0

FAF to MAP 3.9 NM

Knots	60	90	120	150	180
Min:Sec	3:54	2:36	1:57	1:34	1:18

EC-1, 26 DEC 2024 to 23 JAN 2025

EC-1, 26 DEC 2024 to 23 JAN 2025