

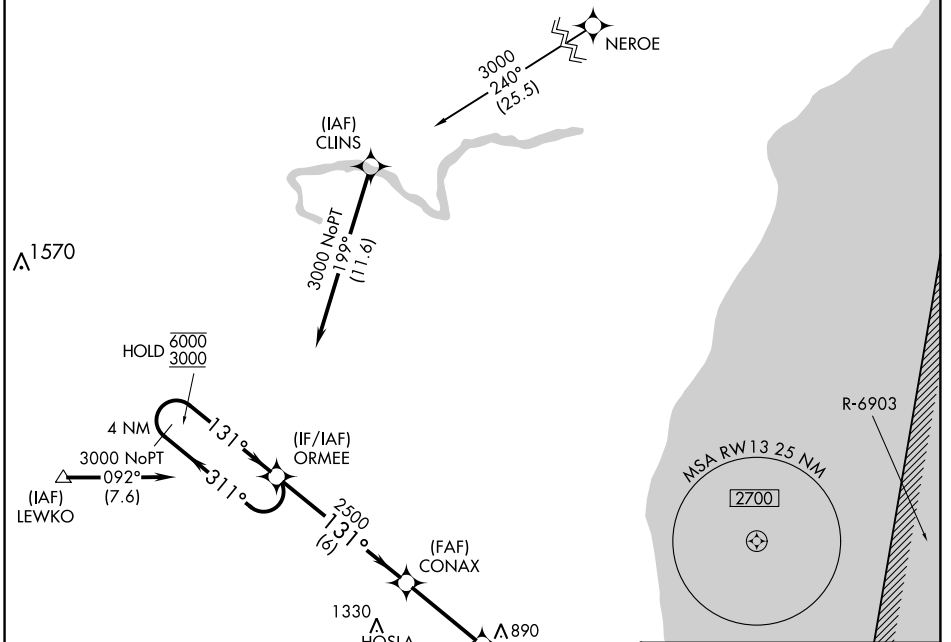
APP CRS	Rwy Idg	<b>5002</b>
<b>131°</b>	TDZE	<b>755</b>
	Apt Elev	<b>755</b>

# RNAV (GPS) RWY 13

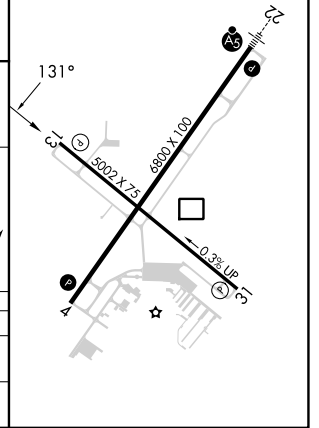
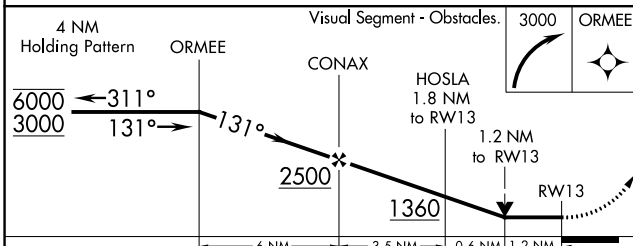
SHEBOYGAN COUNTY MEML INTL (SBM)

RNP APCH.		MISSED APPROACH: Climbing right turn to 3000 direct ORMEE and hold.		
▼ Rwy 13 helicopter visibility reduction below 3/4 SM NA.				

ASOS <b>118.425</b>	MILWAUKEE APP CON <b>127.375 263.075</b>	GCO <b>121.725</b>	CLNC DEL <b>127.375</b>	UNICOM <b>122.7 (CTAF)</b>
------------------------	---	-----------------------	----------------------------	-------------------------------



ELEV	<b>755</b>	TDZE	<b>755</b>
REL Rwy 4	<b>4</b>	MIRL Rwy 13-31	<b>1</b>
HIRL Rwy 4-22	<b>1</b>		



CATEGORY	A	B	C	D
LNVA MDA	1160-1	405 (500-1)	1160-1¼	405 (500-1¼)
CIRCLING	1200-1 445 (500-1)	1220-1 465 (500-1)	1240-1½ 485 (500-1½)	1360-2 605 (700-2)

EC-3, 26 DEC 2024 to 23 JAN 2025

EC-3, 26 DEC 2024 to 23 JAN 2025