

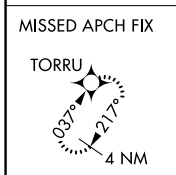
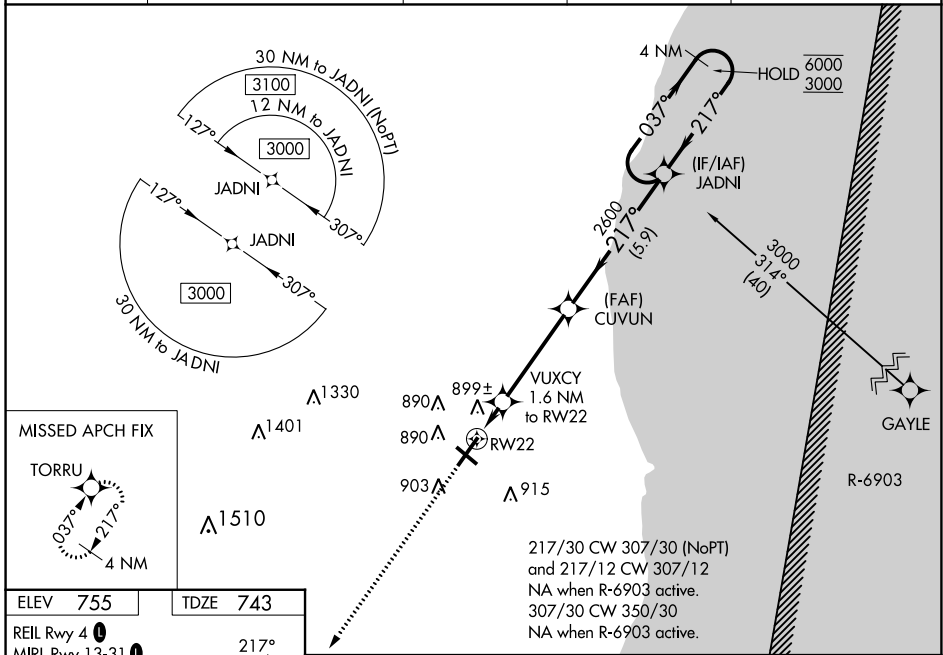
WAAS CH 65904 W22A	APP CRS 217°	Rwy Idg TDZE Apt Elev	6800 743 755
--	------------------------	-----------------------------	---

RNAV (GPS) RWY 22

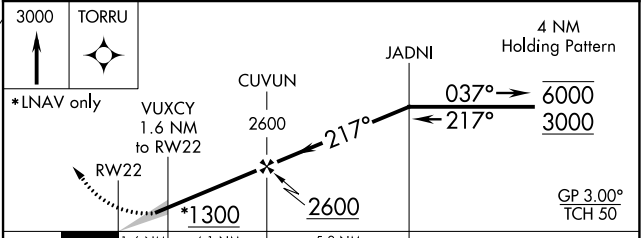
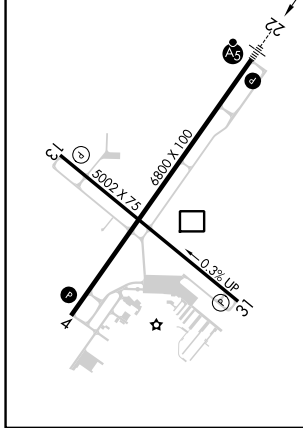
SHEBOYGAN COUNTY MEML INTL (SBM)

RNP APCH.	MALSR	MISSED APPROACH: Climb to 3000 direct TORRU and hold.
<p>For uncompensated Baro-VNAV systems, LNAV/VNAV NA below -20°C or above 54°C. For inop ALS, increase LNAV Cat C/D visibility to 1½ SM.</p>		

ASOS 118.425	MILWAUKEE APP CON 127.375 263.075	GCO 121.725	CLNC DEL 127.375	UNICOM 122.7 (CTAF) 0
------------------------	---	-----------------------	----------------------------	---------------------------------



ELEV 755	TDZE 743
REIL Rwy 4	MIRL Rwy 13-31
HIRL Rwy 4-22	



CATEGORY	A	B	C	D
LPV DA		943-½	200 (200-½)	
LNAV/VNAV DA		1188-¾	445 (500-¾)	
LNAV MDA	1160-½	417 (500-½)	1160-¾	417 (500-¾)
CIRCLING	1200-1 445 (500-1)	1220-1 465 (500-1)	1240-1½ 485 (500-1½)	1360-2 605 (700-2)

EC-3, 26 DEC 2024 to 23 JAN 2025

EC-3, 26 DEC 2024 to 23 JAN 2025