

VOR/DME FFM <b>110.4</b> Chan <b>41</b>	APP CRS <b>115°</b>	Rwy ldg TDZE <b>1182</b> Apt Elev <b>1183</b>	<b>5639</b>
---	------------------------	---	-------------

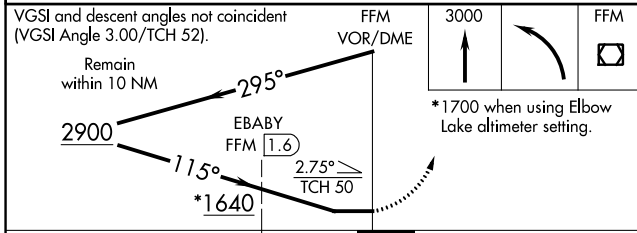
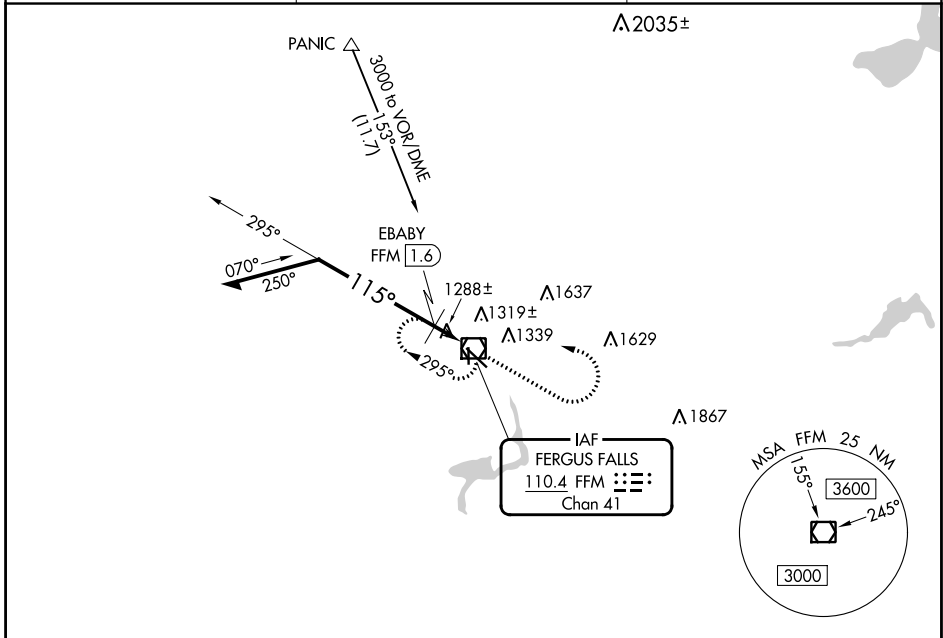
# VOR RWY 13

FERGUS FALLS MUNI/EINAR MICKELSON FLD (FFM)

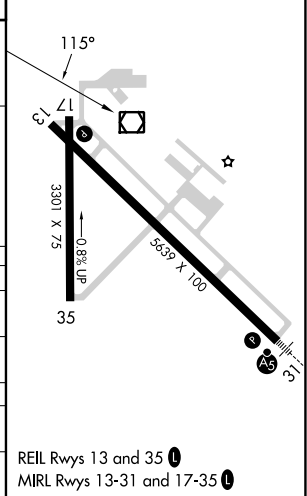
**NA** When local altimeter setting not received, use Elbow Lake altimeter setting and increase all MDAs 60 feet; increase Circling Cat C/D visibility ¼ SM. EBABY fix minimums increase S-13 Cat C/D and Circling Cat C/D visibility ¼ SM.

MISSED APPROACH: Climb to 3000 then left turn direct FFM VOR/DME and hold.

AWOS-3PT <b>119.05</b>	MINNEAPOLIS CENTER <b>126.1 269.2</b>	UNICOM <b>122.8 (CTAF) 0</b>
---------------------------	--	---------------------------------



ELEV 1183	TDZE 1182
-----------	-----------



CATEGORY	A	B	C	D
S-13	1640-1	458 (500-1)	1640-1 <sup>3</sup> / <sub>8</sub>	458 (500-1 <sup>3</sup> / <sub>8</sub> )
CIRCLING	1640-1 457 (500-1)	1740-1 557 (600-1)	1820-1 <sup>3</sup> / <sub>4</sub> 637 (700-1 <sup>3</sup> / <sub>4</sub> )	1940-2 <sup>1</sup> / <sub>2</sub> 757 (800-2 <sup>1</sup> / <sub>2</sub> )
EBABY FIX MINIMUMS				
S-13	1580-1	398 (400-1)	1580-1 <sup>1</sup> / <sub>8</sub>	398 (400-1 <sup>1</sup> / <sub>8</sub> )
CIRCLING	1640-1 457 (500-1)	1740-1 557 (600-1)	1820-1 <sup>3</sup> / <sub>4</sub> 637 (700-1 <sup>3</sup> / <sub>4</sub> )	1940-2 <sup>1</sup> / <sub>2</sub> 757 (800-2 <sup>1</sup> / <sub>2</sub> )

REIL Rwy 13 and 35 **0**  
MIRL Rwy 13-31 and 17-35 **0**

# VOR RWY 13

NC-1, 26 DEC 2024 to 23 JAN 2025

NC-1, 26 DEC 2024 to 23 JAN 2025