

LOC I-OSU 108.5	APP CRS 092°	Rwy Idg TDZE Apt Elev	5004 905 905
---------------------------	------------------------	-----------------------------	---

ILS or LOC RWY 9R

OHIO STATE UNIVERSITY (OSU)

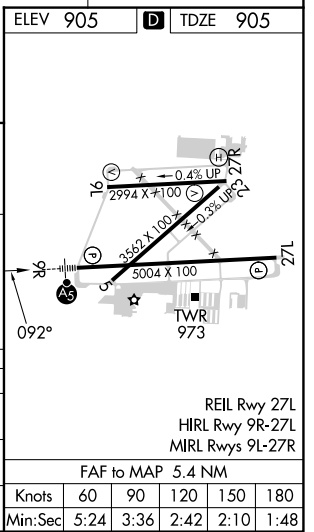
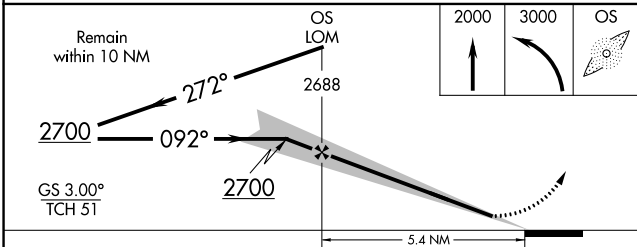
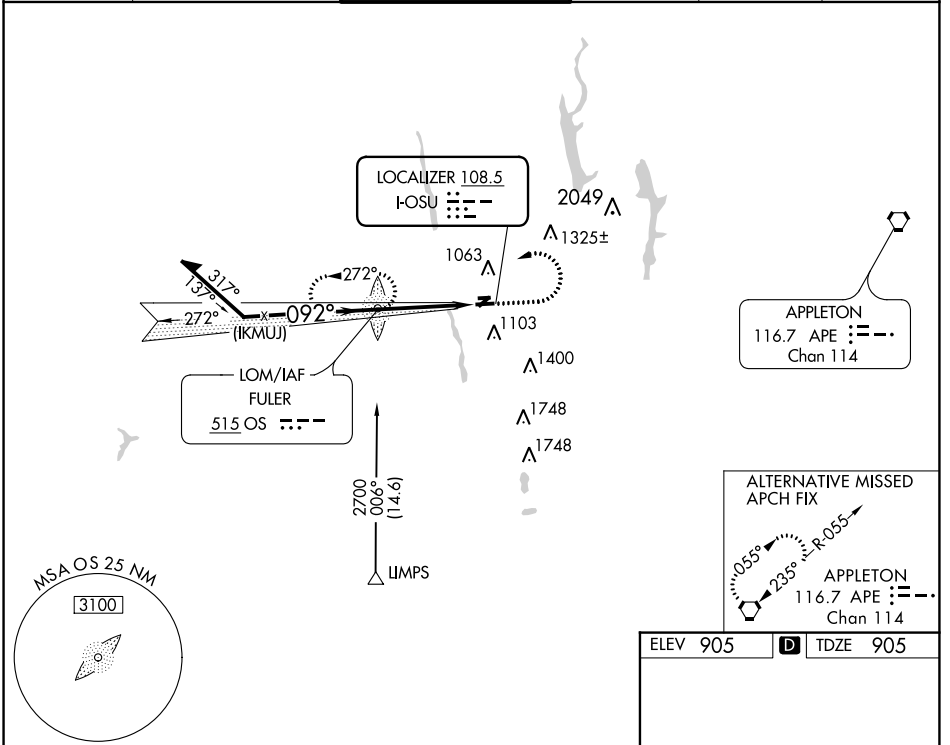
ADF required for procedure entry. ADF required.

When local altimeter setting not received, use John Glenn Columbus Intl altimeter setting; increase DA to 1140 feet; increase all MDAs 40 feet and S-9R visibility Cat C ½ SM and Cat D and Circling Cat D ¼ SM. Circling Rwy 23 NA at night.

MALSRL
AS

MISSED APPROACH: Climb to 2000 then climbing left turn to 3000 direct FULER LOM and hold.

ATIS 121.35	COLUMBUS APP CON 125.95 317.775	STATE TOWER ★ 118.8 (CTAF) 254.325	GND CON 121.7	CLNC DEL 121.7	UNICOM 122.95
-----------------------	---	---	-------------------------	--------------------------	-------------------------



CATEGORY	A	B	C	D
S-ILS 9R	1105-½ 200 (200-½)			
S-LOC 9R	1420-½	515 (600-½)	1420-1	515 (600-1)
CIRCLING	1420-1	515 (600-1)	1420-1½	1680-2½
			515 (600-1½)	775 (800-2½)

EC-2, 26 DEC 2024 to 23 JAN 2025

EC-2, 26 DEC 2024 to 23 JAN 2025