

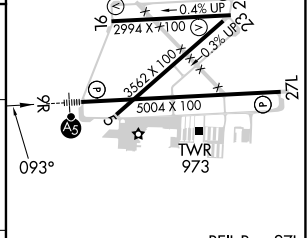
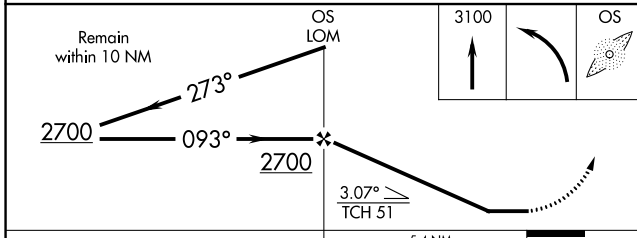
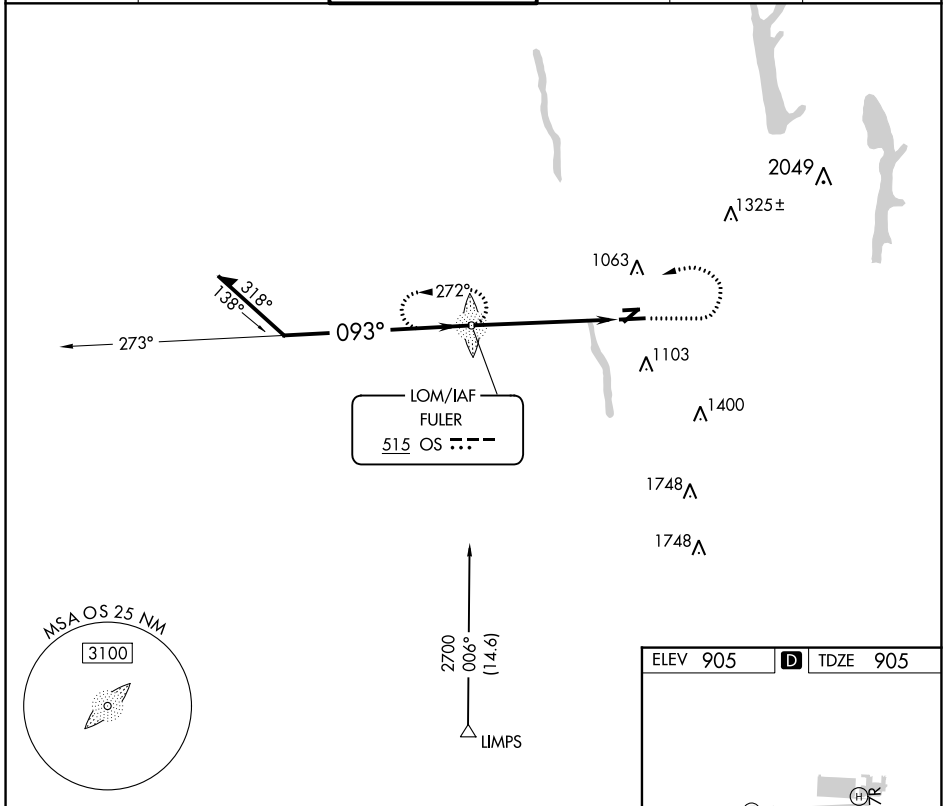
LOM OS <b>515</b>	APP CRS <b>093°</b>	Rwy Idg <b>5004</b> TDZE <b>905</b> Apt Elev <b>905</b>
----------------------	------------------------	--

# NDB RWY 9R

OHIO STATE UNIVERSITY (OSU)

<p><b>⚠</b> When local altimeter setting not received, use John Glenn Columbus Intl altimeter setting and increase all MDAs 40 feet and S-9R visibility Cat C ½ SM and Cat D and Circling Cat D ½ SM. Circling Rwy 23 NA at night.</p>	<p><b>MALS</b>  </p>	<p><b>MISSED APPROACH:</b> Climb to 3100 then left turn direct OS LOM and hold.</p>
--	--------------------------	---

<p>ATIS <b>121.35</b></p>	<p>COLUMBUS APP CON <b>125.95 317.775</b></p>	<p>STATE TOWER* <b>118.8 (CTAF) 254.325</b></p>	<p>GND CON <b>121.7</b></p>	<p>CLNC DEL <b>121.7</b></p>	<p>UNICOM <b>122.95</b></p>
-------------------------------	---	---	---------------------------------	----------------------------------	---------------------------------



CATEGORY	A	B	C	D
S-9R	1460-¾ 555 (600-¾)		1460-1½ 555 (600-1½)	
CIRCLING	1460-1 555 (600-1)		1460-1⅝ 555 (600-1⅝)	1680-2½ 775 (800-2½)

ELEV 905		TDZE 905	
FAF to MAP 5.4 NM			
Knots	60	90	120 150 180
Min:Sec	5:24	3:36	2:42 2:10 1:48

EC-2, 26 DEC 2024 to 23 JAN 2025

EC-2, 26 DEC 2024 to 23 JAN 2025