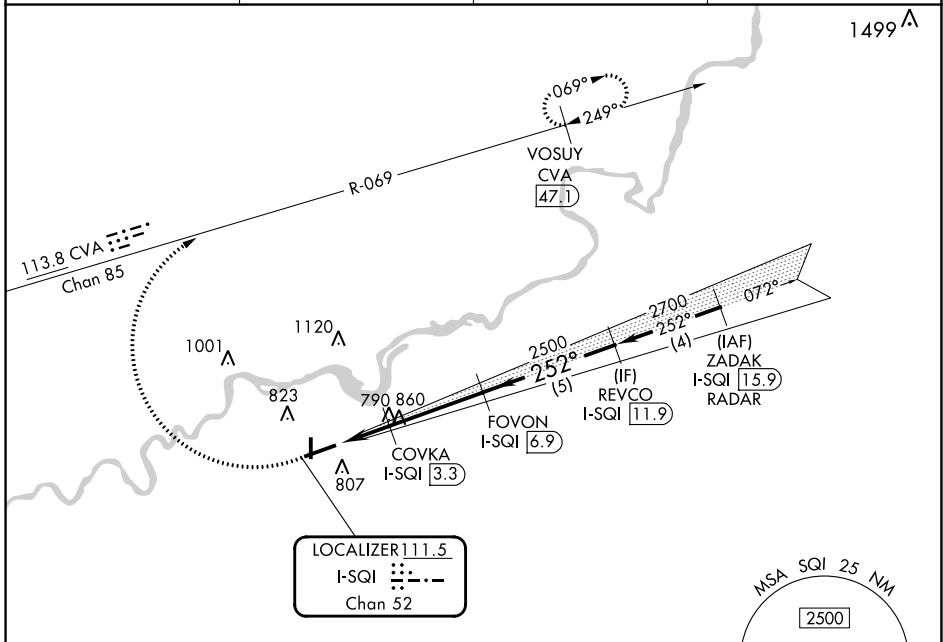


LOC/DME I-SQI <b>111.5</b> Chan 52	APP CRS <b>252°</b>	Rwy Idg <b>6499</b> TDZE <b>647</b> Apt Elev <b>648</b>
--	------------------------	---

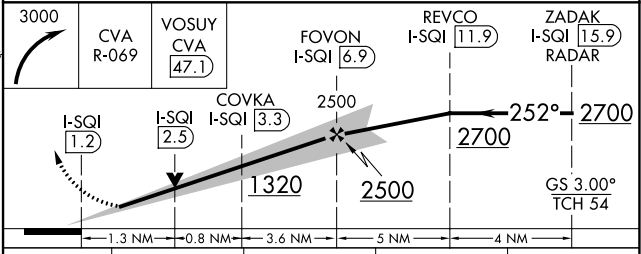
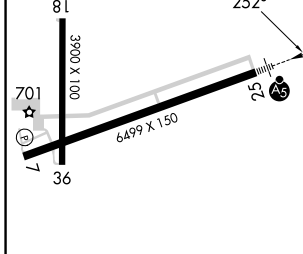
# ILS or LOC RWY 25

WHITESIDE COUNTY/JOS H BITTORF FLD (SQI)

DME required. Radar required for procedure entry.		MALSR	MISSED APPROACH: Climbing right turn to 3000 on CVA VORTAC R-069 to VOSUY/CVA 47.1 DME and hold.	
▼ ▲ NA	AWOS-3PT <b>119.175</b>	ROCKFORD APP CON <b>126.0 327.0</b>	CLNC DEL <b>128.0</b>	UNICOM <b>123.0 (CTAF) 0</b>



ELEV 648	TDZE 647
----------	----------



HIRL Rwy 7-25 0		MIRL Rwy 18-36 0		REIL Rwy 7, 18 and 36 0	
FAF to MAP 5.7 NM					
Knots	60	90	120	150	180
Min:Sec	5:42	3:48	2:51	2:17	1:54
☑ CIRCLING	1140-1 492 (500-1)		1160-1½ 1480-2¾ 512 (600-1½) 832 (900-2¾)		

EC-3, 26 DEC 2024 to 23 JAN 2025

EC-3, 26 DEC 2024 to 23 JAN 2025