

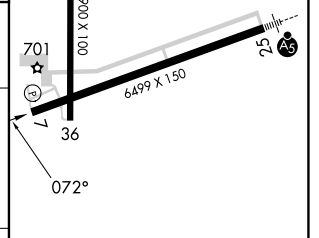
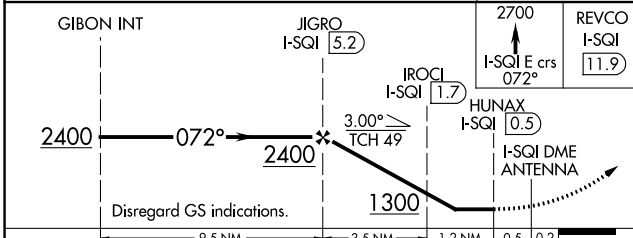
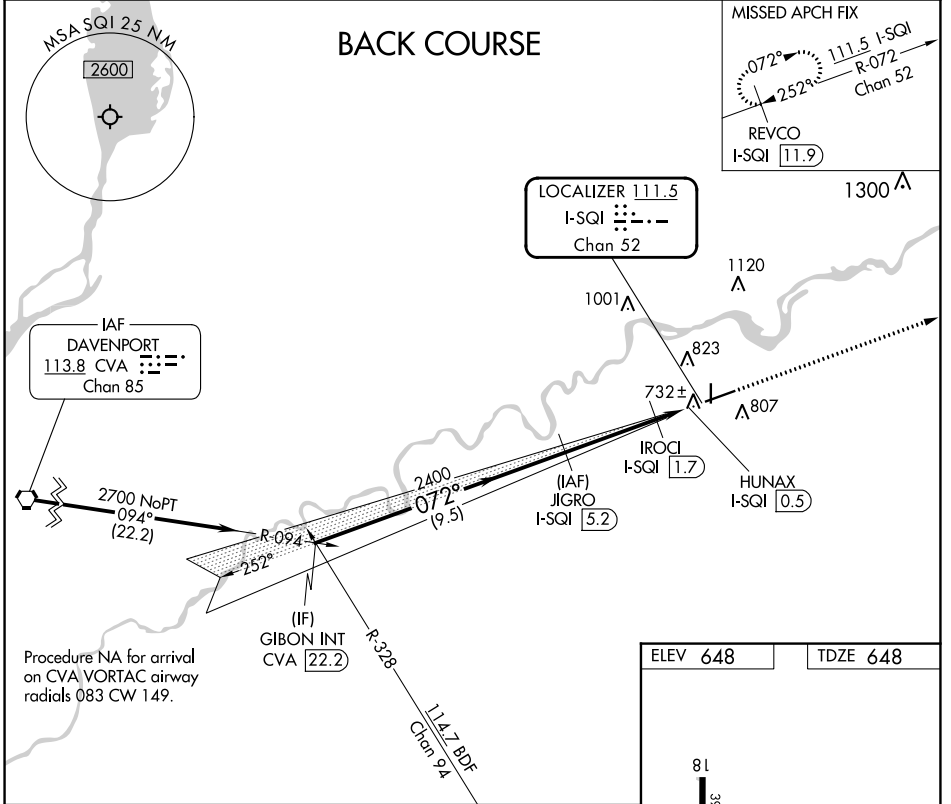
LOC/DME I-SQI <b>111.5</b> Chan <b>52</b>	APP CRS <b>072°</b>	Rwy ldg <b>6499</b> TDZE <b>648</b> Apt Elev <b>648</b>
---	------------------------	---

# LOC BC RWY 7

WHITESIDE COUNTY/JOS H BITTORF FLD (SQI)

DME required.		MISSED APPROACH: Climb to 2700 on I-SQI localizer east course 072° to REVCO/I-SQI 11.9 DME and hold.
<p>▼ Rwy 7 helicopter visibility reduction below ¾ SM NA.</p> <p>▲ NA</p>		

AWOS-3PT <b>119.175</b>	ROCKFORD APP CON <b>126.0 327.0</b>	CLNC DEL <b>128.0</b>	UNICOM <b>123.0 (CTAF) 0</b>
----------------------------	--	--------------------------	---------------------------------



CATEGORY	A	B	C	D
S-LOC 7	1000-1 352 (400-1)			
CIRCLING	1140-1 492 (500-1)	1160-1½ 512 (600-1½)	1480-2¾ 832 (900-2¾)	



MIRL Rwy 18-36  
HIRL Rwy 7-25  
REIL Rws 7, 18 and 36

EC-3, 26 DEC 2024 to 23 JAN 2025

EC-3, 26 DEC 2024 to 23 JAN 2025