

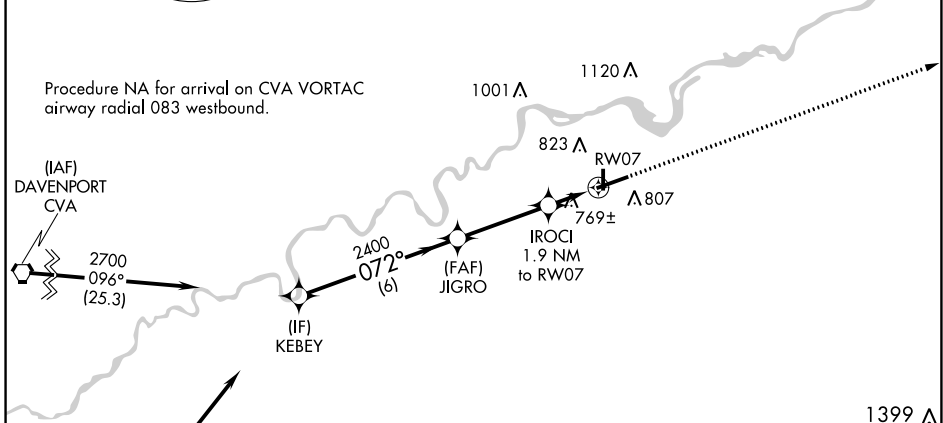
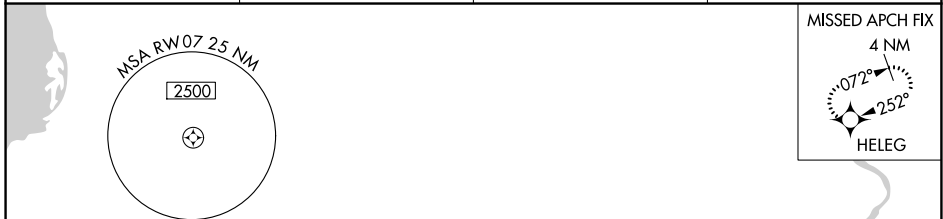
APP CRS	Rwy Idg	6499
072°	TDZE	648
	Apt Elev	648

RNAV (GPS) RWY 7

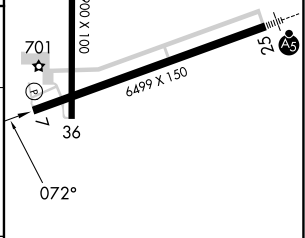
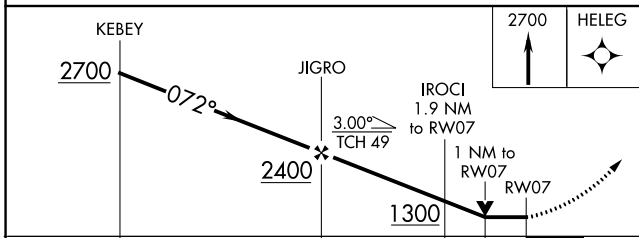
WHITESIDE COUNTY/JOS H BITTORF FLD (SQI)

RNP APCH -GPS.		MISSED APPROACH: Climb to 2700 direct HELEG and hold.	
Rwy 7 helicopter visibility reduction below 3/4 SM NA.			

AWOS-3PT 119.175	ROCKFORD APP CON 126.0 327.0	CLNC DEL 128.0	UNICOM 123.0 (CTAF) 0
----------------------------	--	--------------------------	---------------------------------



ELEV 648	TDZE 648
----------	----------



CATEGORY	A	B	C	D
LNAV MDA	1020-1 372 (400-1)			
CIRCLING	1140-1 492 (500-1)	1160-1½ 512 (600-1½)	1480-2¾ 832 (900-2¾)	

EC-3, 26 DEC 2024 to 23 JAN 2025

EC-3, 26 DEC 2024 to 23 JAN 2025