

WAAS CH 40030 W26A	APP CRS 256°	Rwy Idg 2810 TDZE 523 Apt Elev 523
--	------------------------	---

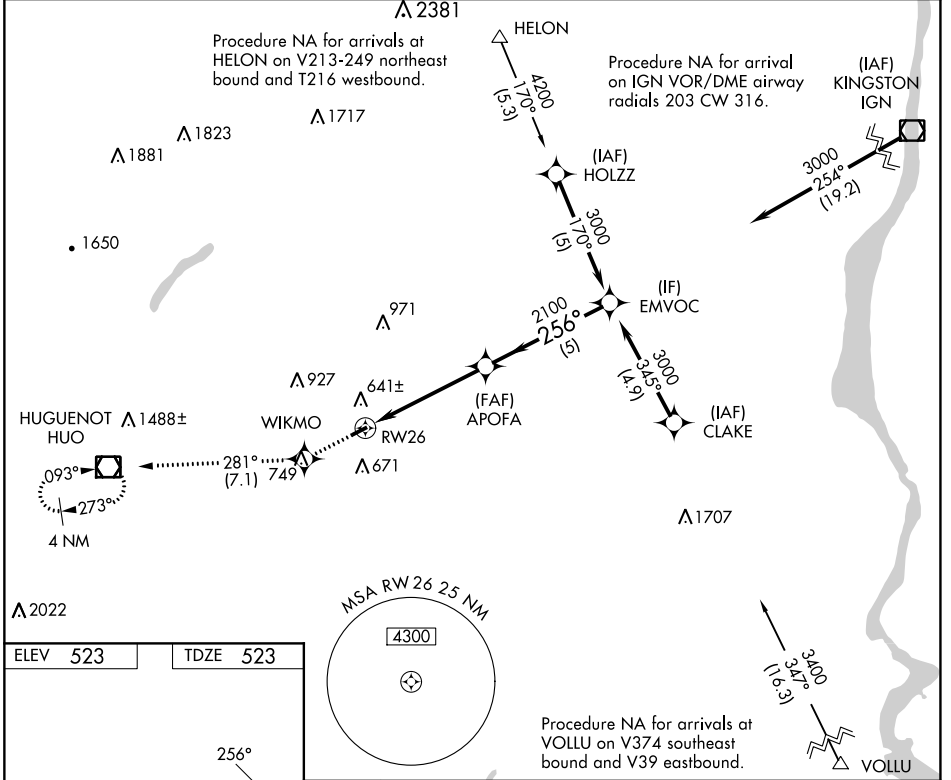
RNAV (GPS) RWY 26

RANDALL (Ø6N)

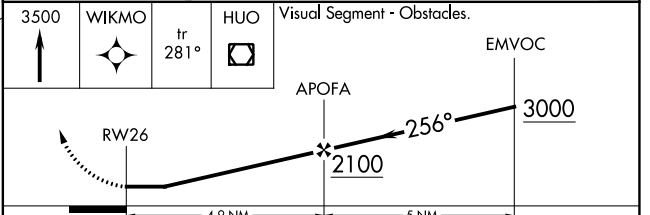
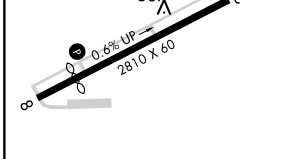
RNP APCH. Procedure NA at night. Rwy 26 helicopter visibility reduction below 1 SM NA. Use Newburgh altimeter setting; when not received, use Montgomery altimeter setting.

MISSED APPROACH: Climb to 3500 direct WIKMO and on track 281° to HVO VOR/DME and hold, continue climb-in-hold to 3500.

NEW YORK APP CON 132.75 363.1	UNICOM 122.8 (CTAF) 0
---	---------------------------------



ELEV 523	TDZE 523
----------	----------



CATEGORY	A	B	C	D
LP MDA	1020-1 497 (500-1)		NA	
LNAV MDA	1060-1 537 (600-1)		NA	
CIRCLING	1080-1 557 (600-1)		NA	

NE-2, 26 DEC 2024 to 23 JAN 2025

NE-2, 26 DEC 2024 to 23 JAN 2025