

APP CRS	Rwy Idg	<b>2247</b>
<b>076°</b>	TDZE	<b>523</b>
	Apt Elev	<b>523</b>

# RNAV (GPS) RWY 8

RANDALL (Ø6N)

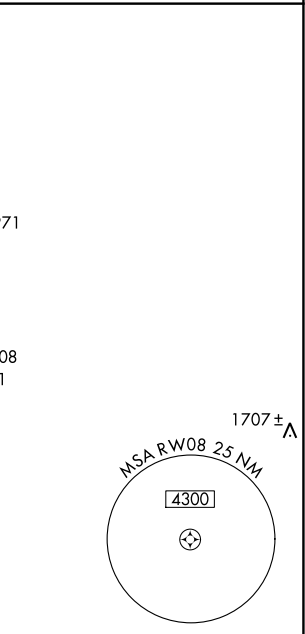
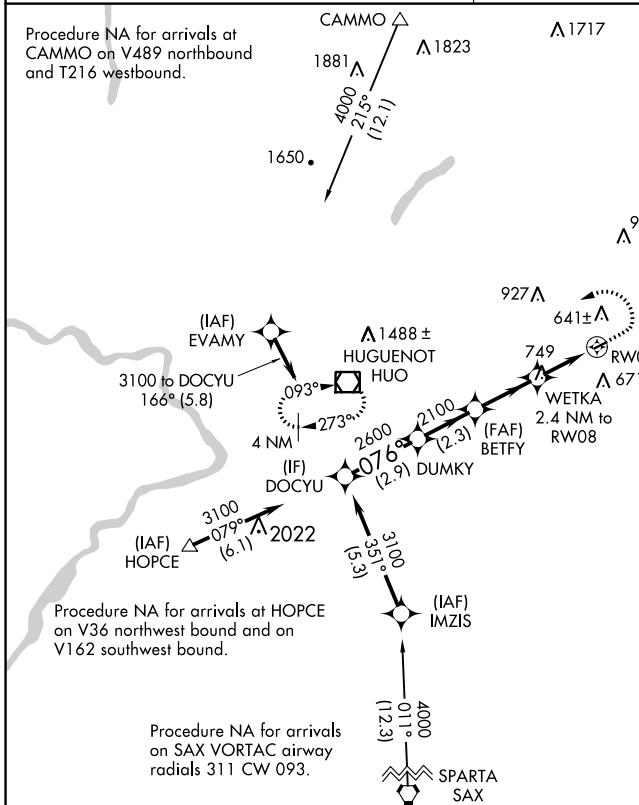
RNP APCH.

▼ Procedure NA at night. Use Newburgh altimeter setting, when not received, use Montgomery altimeter setting.  
 ▲ NA Rwy 8 helicopter visibility reduction below 1 SM NA.

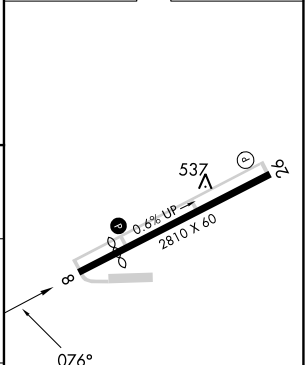
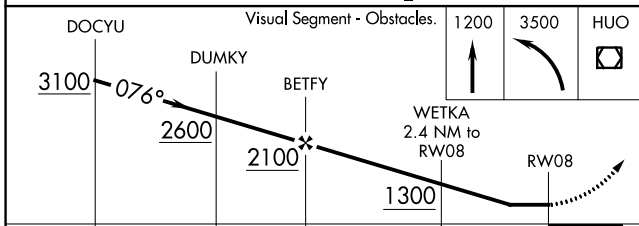
MISSED APPROACH: Climb to 1200 then climbing left turn to 3500 direct HUO VOR/DME and hold, continue climb-in-hold to 3500.

NEW YORK APP CON  
**132.75 363.1**

UNICOM  
**122.8 (CTAF) 0**



ELEV 523	TDZE 523
----------	----------



CATEGORY	A	B	C	D
LNAV MDA	1140-1 617 (700-1)		NA	
CIRCLING	1140-1 617 (700-1)		NA	

MIRL Rwy 8-26 0

NE-2, 26 DEC 2024 to 23 JAN 2025

NE-2, 26 DEC 2024 to 23 JAN 2025