

| | | | |
|--|------------------------|-----------------------------|---|
| WAAS CH 86833 W17A | APP CRS 173° | Rwy Idg TDZE Apt Elev | 5701 2918 2918 |
|--|------------------------|-----------------------------|---|

RNAV (GPS) RWY 17

PERRYTON OCHILTREE COUNTY (PYX)

RNP APCH - GPS.

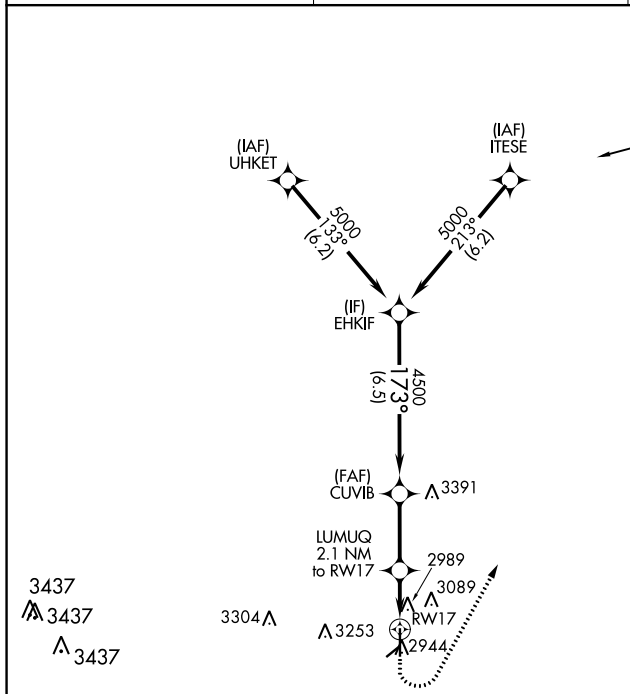
⚠ Circling NA to Rwy 4 and 22. For uncompensated Baro-VNAV systems, LNAV/VNAV NA below -20°C or above 54°C.

MISSED APPROACH: Climb to 3400 then climbing left turn to 6000 direct ZALIK and hold.

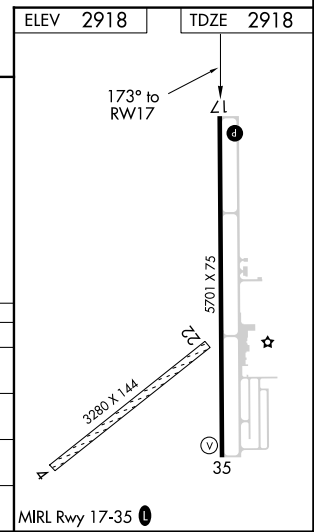
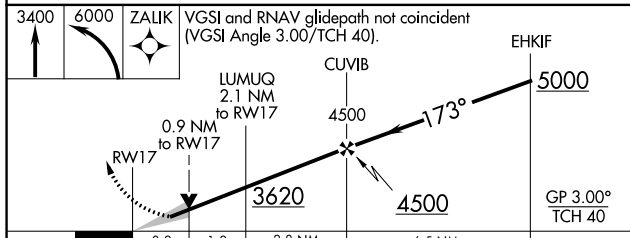
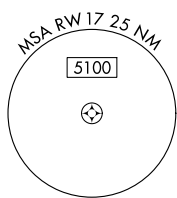
AWOS-3
118.175

KANSAS CITY CENTER
126.95 379.2

UNICOM
122.8 (CTAF) 0



Procedure NA for arrivals at ZALIK on V507 southeast bound.



| CATEGORY | A | B | C | D |
|-------------------|-----------------------|-----------------------|---|----|
| LPV DA | 3168-3/4 | 250 (300-3/4) | | NA |
| LNAV/VNAV DA | 3190-7/8 | 272 (300-7/8) | | NA |
| LNAV MDA | 3240-1 | 322 (400-1) | | NA |
| C CIRCLING | 3300-1 382 (400-1) | 3580-1 662 (700-1) | | NA |

SC-2, 26 DEC 2024 to 23 JAN 2025

SC-2, 26 DEC 2024 to 23 JAN 2025