

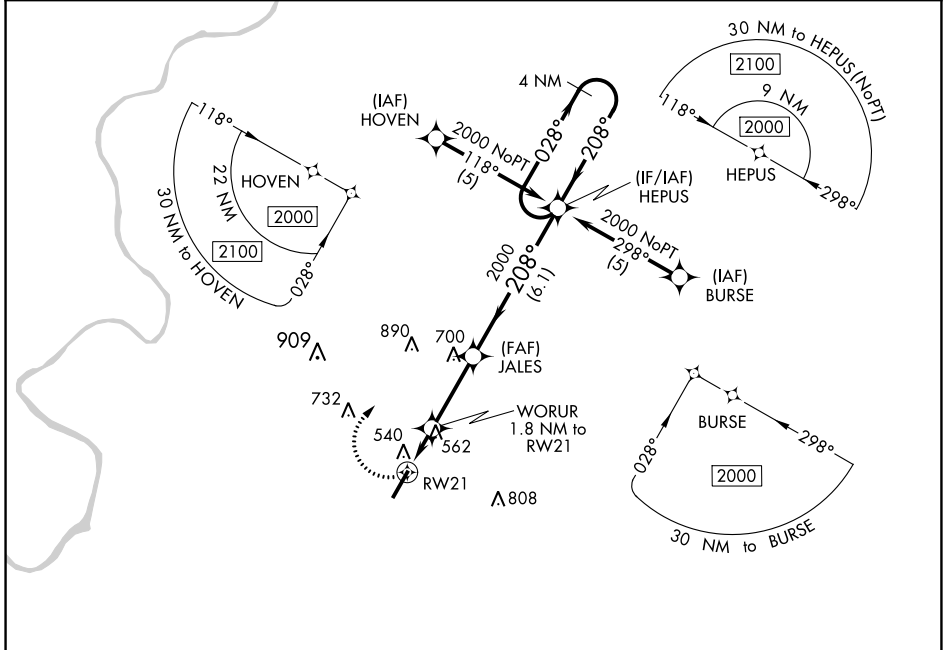
APP CRS	Rwy Idg	6028
208°	TDZE	419
	Apt Elev	419

RNAV (GPS) RWY 21
MONROE COUNTY AEROPLEX (MVC)

RNP APCH. MISSED APPROACH: Climbing right turn to 2000 direct HEPUS and hold.

▼ Obtain local altimeter setting on CTAF; when not received, use Evergreen Rgnl/Middleton Fld altimeter setting. Procedure NA at night. Rwy 21 helicopter visibility reduction below 1 SM NA.

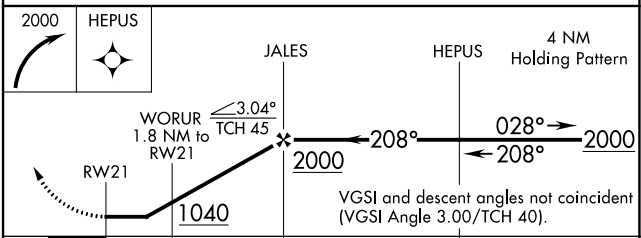
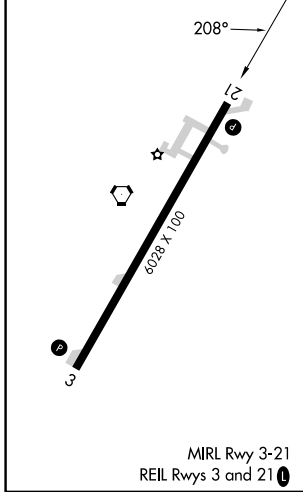
ATLANTA CENTER **118.55 267.9** UNICOM **123.0** (CTAF) **0**



SE-4, 26 DEC 2024 to 23 JAN 2025

SE-4, 26 DEC 2024 to 23 JAN 2025

ELEV 419	TDZE 419
----------	----------



CATEGORY	A	B	C	D
LNAV/MDA	880-1 461 (500-1)		880-1 1/4 461 (500-1 1/4)	880-1 1/2 461 (500-1 1/2)
CIRCLING	880-1 461 (500-1)	920-1 501 (600-1)	920-1 1/2 501 (600-1 1/2)	1120-2 1/4 701 (800-2 1/4)
EVERGREEN RGNL/MIDDLETON FLD ALTIMETER SETTING MINIMUMS				
LNAV/MDA	940-1 521 (600-1)		940-1 1/2 521 (600-1 1/2)	940-1 3/4 521 (600-1 3/4)
CIRCLING	940-1 521 (600-1)	980-1 561 (600-1)	980-1 1/2 561 (600-1 1/2)	1180-2 1/2 761 (800-2 1/2)