

APP CRS 337°	Rwy Idg TDZE Apt Elev	4742 30 32
------------------------	-----------------------------	---------------------------------------

RNAV (GPS) RWY 34

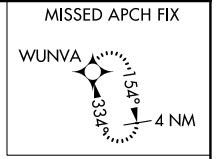
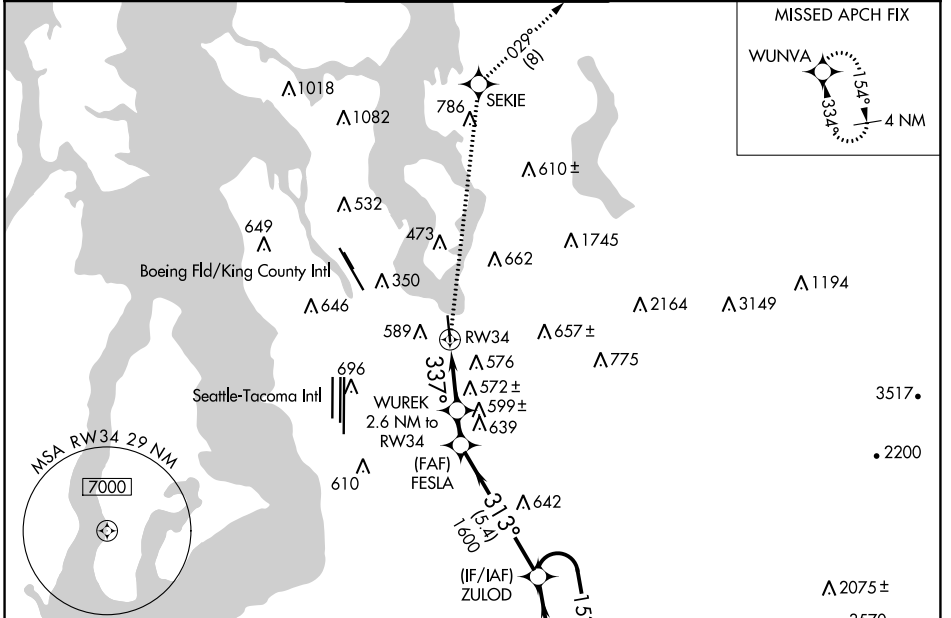
RENTON MUNI (RNT)

RNP APCH-GPS.

⚠ Circling NA west of Rwy 16-34. Rwy 34 helicopter visibility reduction below 1 SM NA. Straight-in Rwy 34 at night, Circling Rwy 34 at night, operational VGSI required, remain on or above VGSI glidepath until threshold.

MISSED APPROACH: Climb to 3000 direct SEKIE and on track 029° to WUNVA and hold.

ATIS 126.95	SEATTLE APP CON 123.9 338.2 (RWY 16) 125.9 306.9 (RWY 34)	RENTON TOWER* 124.7 (CTAF) 0 256.9	GND CON 121.6 256.9	UNICOM 122.95
-----------------------	---	--	-------------------------------	-------------------------

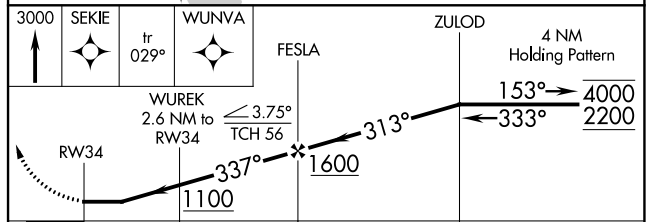


ELEV 32 **D** TDZE 30

MIRL Rwy 16-34 **Ⓛ**
REIL Rwy 16 and 34 **Ⓛ**

TWR 98

337°



CATEGORY	A	B	C	D
LNAV MDA	840-1 810 (900-1)	840-1¼ 810 (900-1¼)	840-2½ 810 (900-2½)	NA
C CIRCLING	860-1¼ 828 (900-1¼)	920-1¼ 888 (900-1¼)	1000-3 968 (1000-3)	NA

NW-1, 26 DEC 2024 to 23 JAN 2025

NW-1, 26 DEC 2024 to 23 JAN 2025