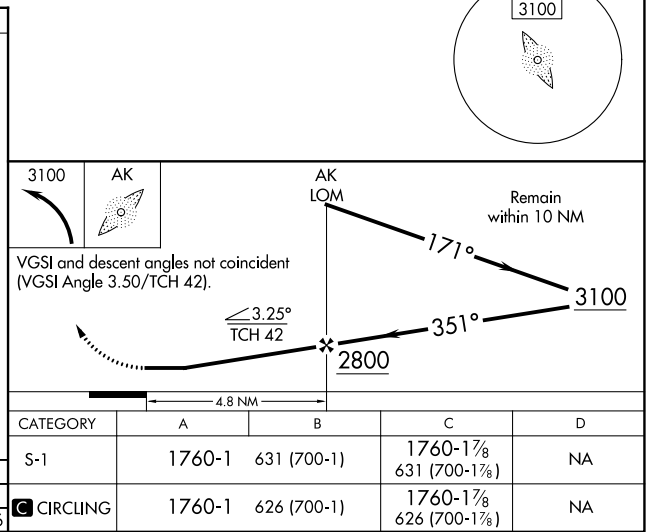
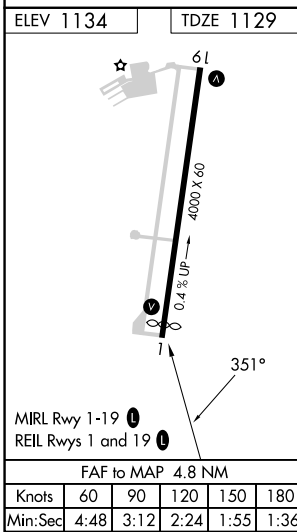
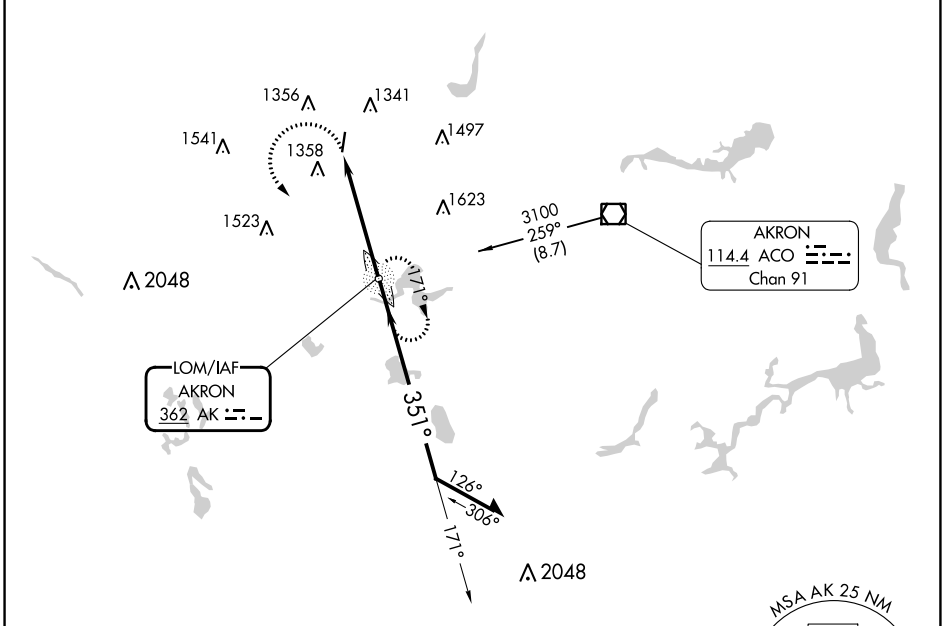


LOM AK 362	APP CRS 351°	Rwy Idg 3947
		TDZE 1129
		Apt Elev 1134

NDB RWY 1

KENT STATE UNIVERSITY (1G3)

<p>▼ When local altimeter setting not received, use Akron Fulton Intl altimeter setting.</p> <p>▲ NA Rwy 1 helicopter visibility reduction below 3/4 SM NA.</p>		<p>MISSED APPROACH: Climbing left turn to 3100 direct AKRON LOM and hold.</p>			
AWOS-2 119.15	AKR ASOS 126.825	CLEVELAND APP CON* 125.5 371.875	CLNC DEL 125.65	UNICOM 122.725 (CTAF)	122.9 0



EC-2, 26 DEC 2024 to 23 JAN 2025

EC-2, 26 DEC 2024 to 23 JAN 2025