

VOR/DME ACO 114.4 Chan 91	APP CRS 289°	Rwy Idg TDZE Apt Elev 1134	N/A N/A 1134
---	------------------------	---	---

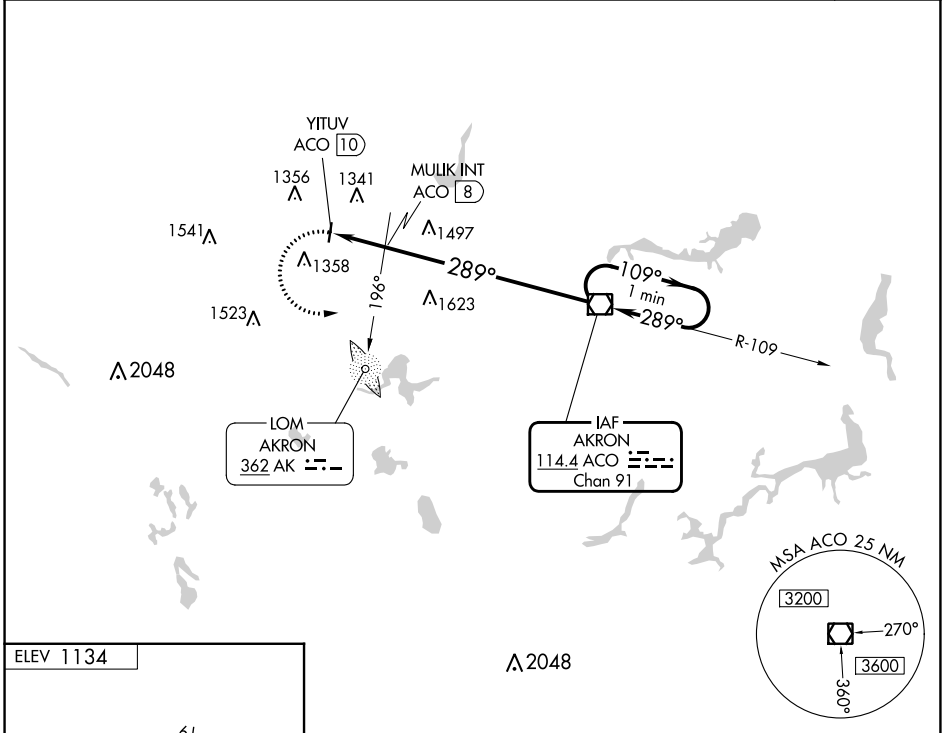
VOR-A

KENT STATE UNIVERSITY (1G3)

▼ When local altimeter setting not received, use Akron Fulton
▲ NA Init altimeter setting.

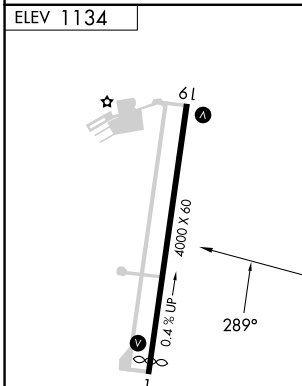
MISSED APPROACH: Climbing left turn to
3000 direct ACO VOR/DME and hold.

AWOS-2 119.15	AKR ASOS 126.825	CLEVELAND APP CON ★ 125.5 371.875	CLNC DEL 125.65	UNICOM 122.725 (CTAF)	122.9 0
-------------------------	----------------------------	---	---------------------------	---------------------------------	----------------



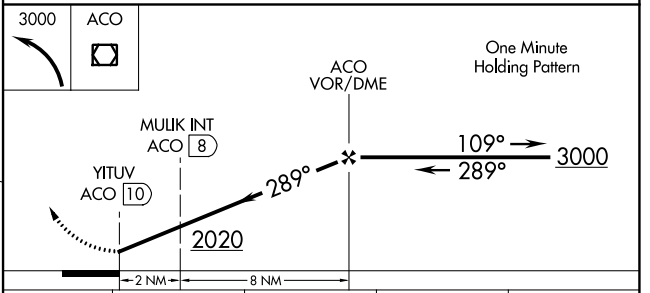
EC-2, 26 DEC 2024 to 23 JAN 2025

EC-2, 26 DEC 2024 to 23 JAN 2025



ELEV 1134

MIRL Rwy 1-19	REIL Rwys 1 and 19				
FAF to MAP 10 NM					
Knots	60	90	120	150	180
Min:Sec	10:00	6:40	5:00	4:00	3:20



CATEGORY	A	B	C	D
C CIRCLING	2020-1¼	886 (900-1¼)	2020-2¾ 886 (900-2¾)	NA
MULIK FIX MINIMUMS (ADF OR DME REQUIRED)				
C CIRCLING	1760-1	626 (700-1)	1760-1¾ 626 (700-1¾)	NA

VOR-A